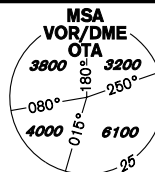


# INSTRUMENT APPROACH CHART - ICAO

AERODROME ELEV **844**  
THR RWY 22 ELEV **808**  
OCH RELATED TO THR RWY 22

PRAHA RADAR 119,375  
128,525  
121,500  
MOŠNOV TOWER 120,805  
121,500



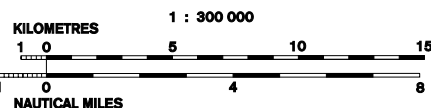
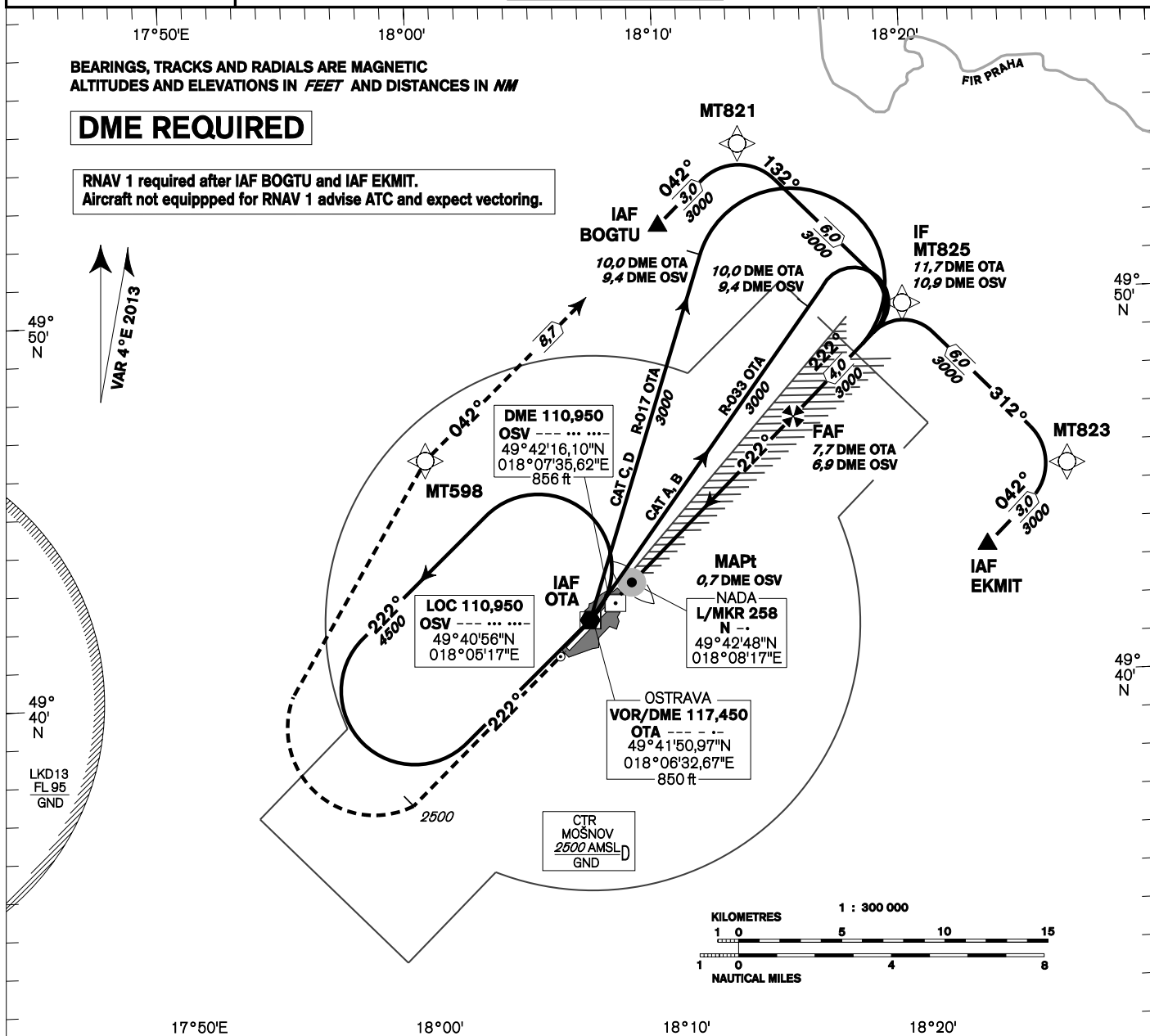
## OSTRAVA/Mošnov ILS RWY 22

BEARINGS, TRACKS AND RADIALS ARE MAGNETIC  
ALTITUDES AND ELEVATIONS IN FEET AND DISTANCES IN NM

**DME REQUIRED**

RNAV 1 required after IAF BOGTU and IAF EKMIT.  
Aircraft not equipped for RNAV 1 advise ATC and expect vectoring.

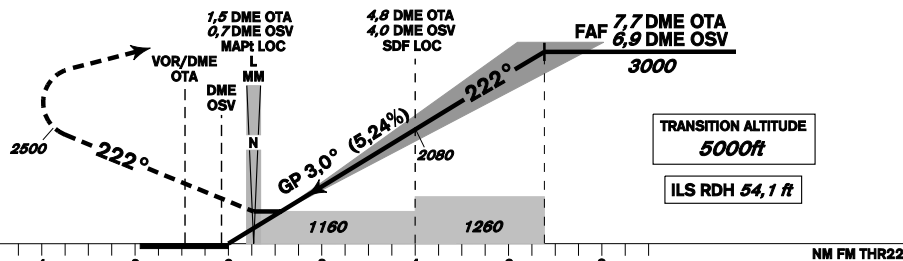
VAR 4°E 2013



**MISSED APPROACH:**

Climb on track 222°, at 2500 ft AMSL, turn right to MT598 (fly-by) in climbing to 3000 ft AMSL, continue to BOGTU. In case of RCF climb to 2500 ft AMSL and turn right to VOR/DME OTA in climbing to 4500 ft AMSL.

THR 494225.66N, 0180742.42E  
ELEV 808



change: FREQ, CallSign OSTRAVA RADAR to PRAHA RADAR

OCA/OCH		A	B	C	D
Cat I	ft	963/155	975/167	983/175	993/185
Cat II	ft	857/49	868/60	880/72	893/85
LOC		1160/350			
Circling	ft	1400/560	1440/600	1640/790	2100/1260

DME OSV NM	7	6	5	4	3	2	1
DME OTA NM	7,78	6,8	5,8	4,8	3,8	2,8	1,8
DIST THR NM	6,8	5,8	4,8	3,8	2,8	1,8	0,8
ALTITUDES ft	3030	2720	2400	2080	1760	1440	1120
LOC	kt	80	100	120	140	160	180
FAF - MAPt 6,2 NM	min:sec	4:39	3:43	3:06	2:39	2:19	2:04
Rate of descent (5,24%)	ft/min	420	530	640	740	850	960

CAT IIIa and IIIb approved

Timing is not authorized for defining the MAPt.