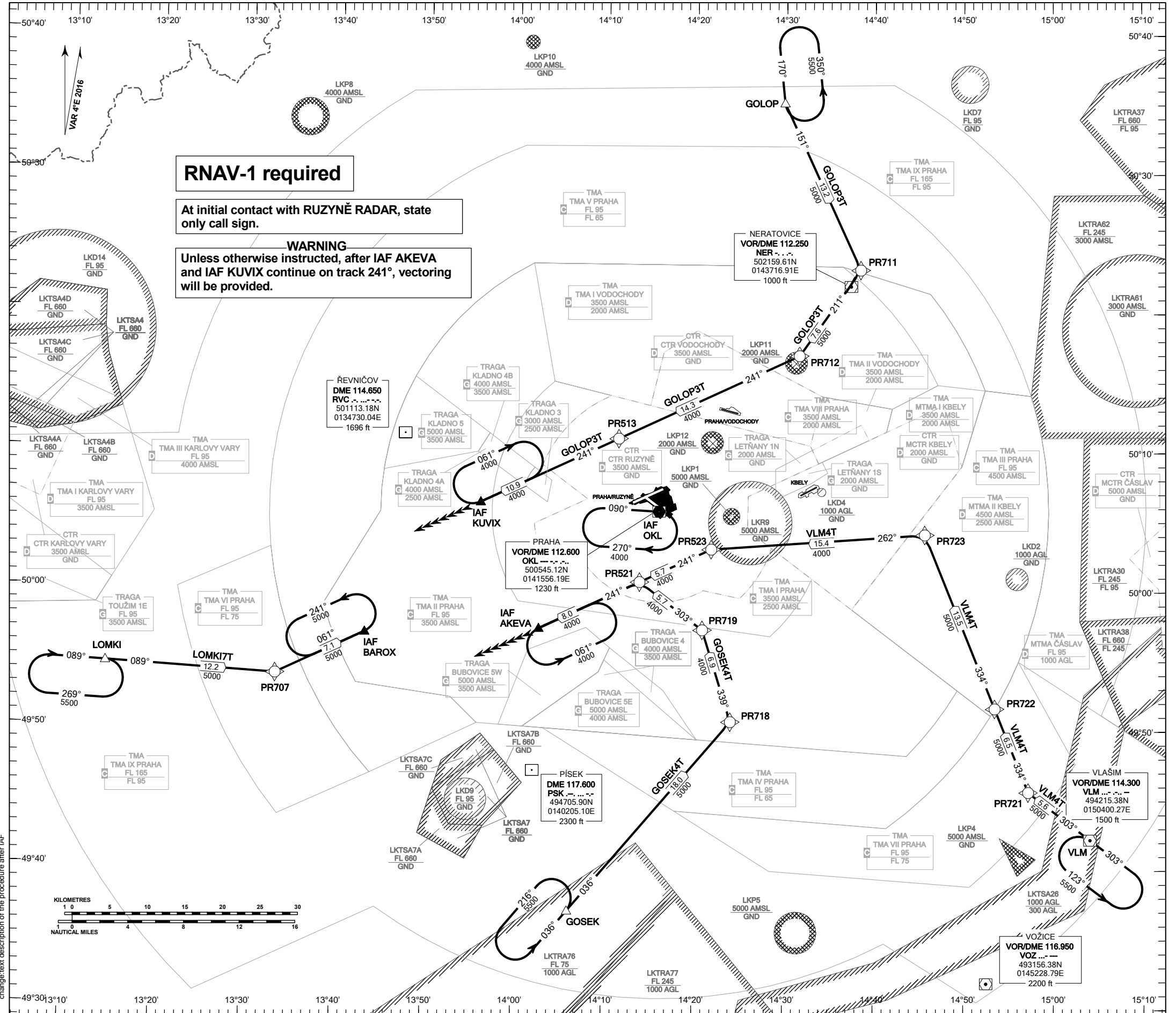


**RNAV STANDARD ARRIVAL CHART - INSTRUMENT
(STAR) - ICAO**

**PRAHA/RUZYŇĚ
RNAV STAR RWY 06**

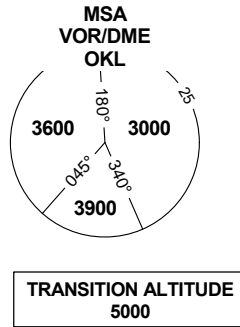


RNAV-1 required

At initial contact with RUZYŇĚ RADAR, state only call sign.

WARNING
Unless otherwise instructed, after IAF AKEVA and IAF KUVIX continue on track 241°, vectoring will be provided.

PRAHA APPROACH / RADAR	120.530
RUZYŇĚ APPROACH / RADAR	127.580
RUZYŇĚ RADAR / INFORMATION	119.010
SUPPLEMENTARY FREQ APP	118.310
RUZYŇĚ DELIVERY	136.080
RUZYŇĚ TOWER	120.060
SUPPLEMENTARY FREQ TWR	134.560
RUZYŇĚ GROUND	118.110
RUZYŇĚ ATIS	121.910
EMERGENCY FREQ	122.160
	121.500



TRANSITION ALTITUDE
5000

BEARINGS, TRACKS AND RADIALS ARE MAGNETIC
ALTITUDES AND ELEVATIONS ARE IN FEET
DISTANCES ARE IN NM

Speed restriction see AIP AD 2-LKPR-30, 2.22.4.2.1