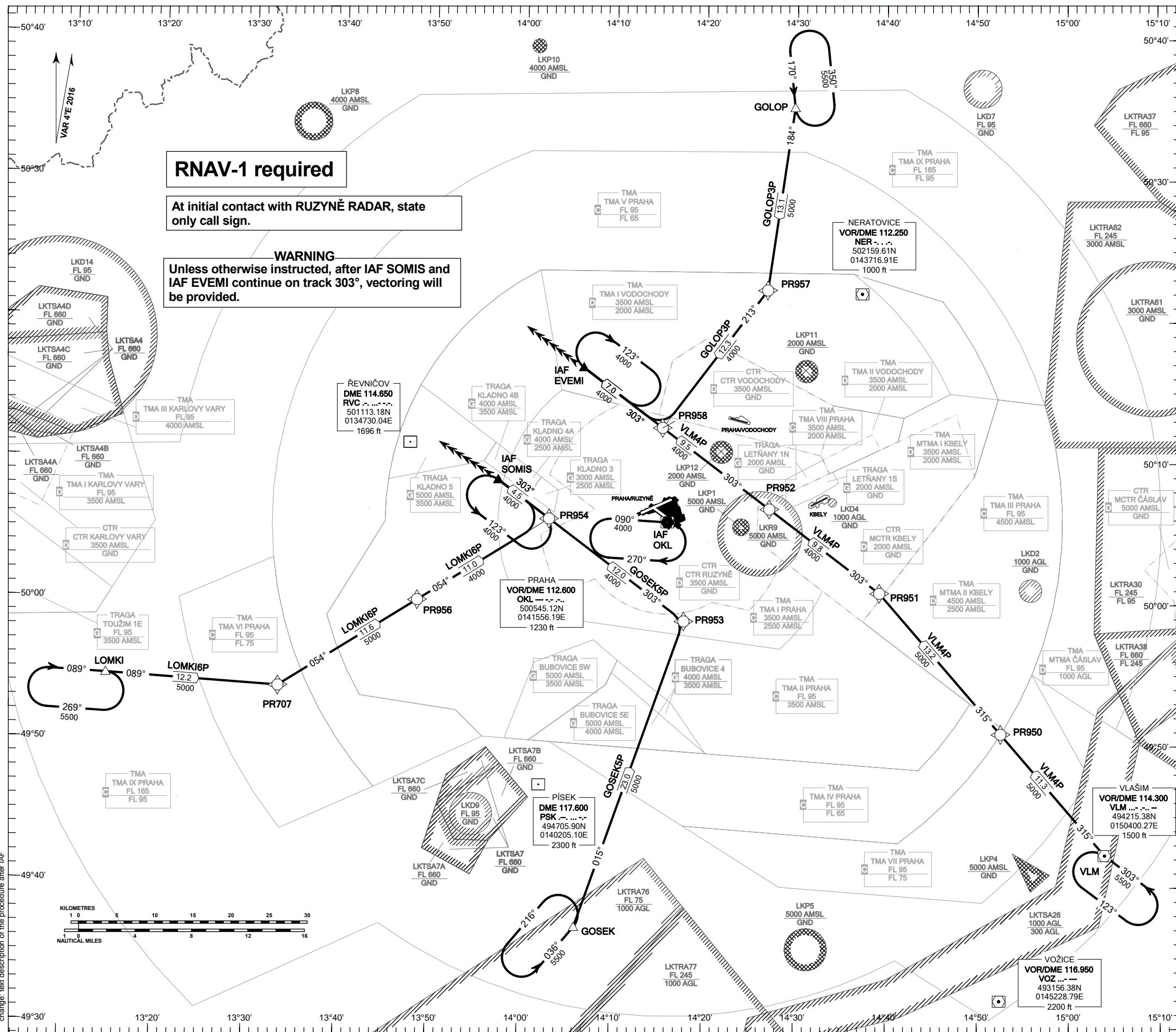


**RNAV STANDARD ARRIVAL CHART - INSTRUMENT
(STAR) - ICAO**

**PRAHA/RUZYŇĚ
RNAV STAR RWY 12**

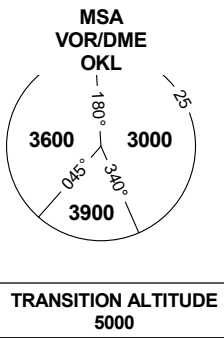


RNAV-1 required

At initial contact with RUZYŇĚ RADAR, state only call sign.

WARNING
Unless otherwise instructed, after IAF SOMIS and IAF EVEMI continue on track 303°, vectoring will be provided.

PRAHA APPROACH / RADAR	120.530
RUZYŇĚ APPROACH / RADAR	127.580
RUZYŇĚ RADAR / INFORMATION	119.010
SUPPLEMENTARY FREQ APP	136.080
RUZYŇĚ DELIVERY	120.060
RUZYŇĚ TOWER	134.560
SUPPLEMENTARY FREQ TWR	118.110
RUZYŇĚ GROUND	121.910
RUZYŇĚ ATIS	122.160
EMERGENCY FREQ	121.500



BEARINGS, TRACKS AND RADIALS ARE MAGNETIC
ALTITUDES AND ELEVATIONS ARE IN FEET
DISTANCES ARE IN NM

Speed restriction see AIP AD 2-LKPR-30, 2.22.4.2.1