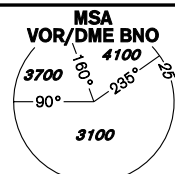


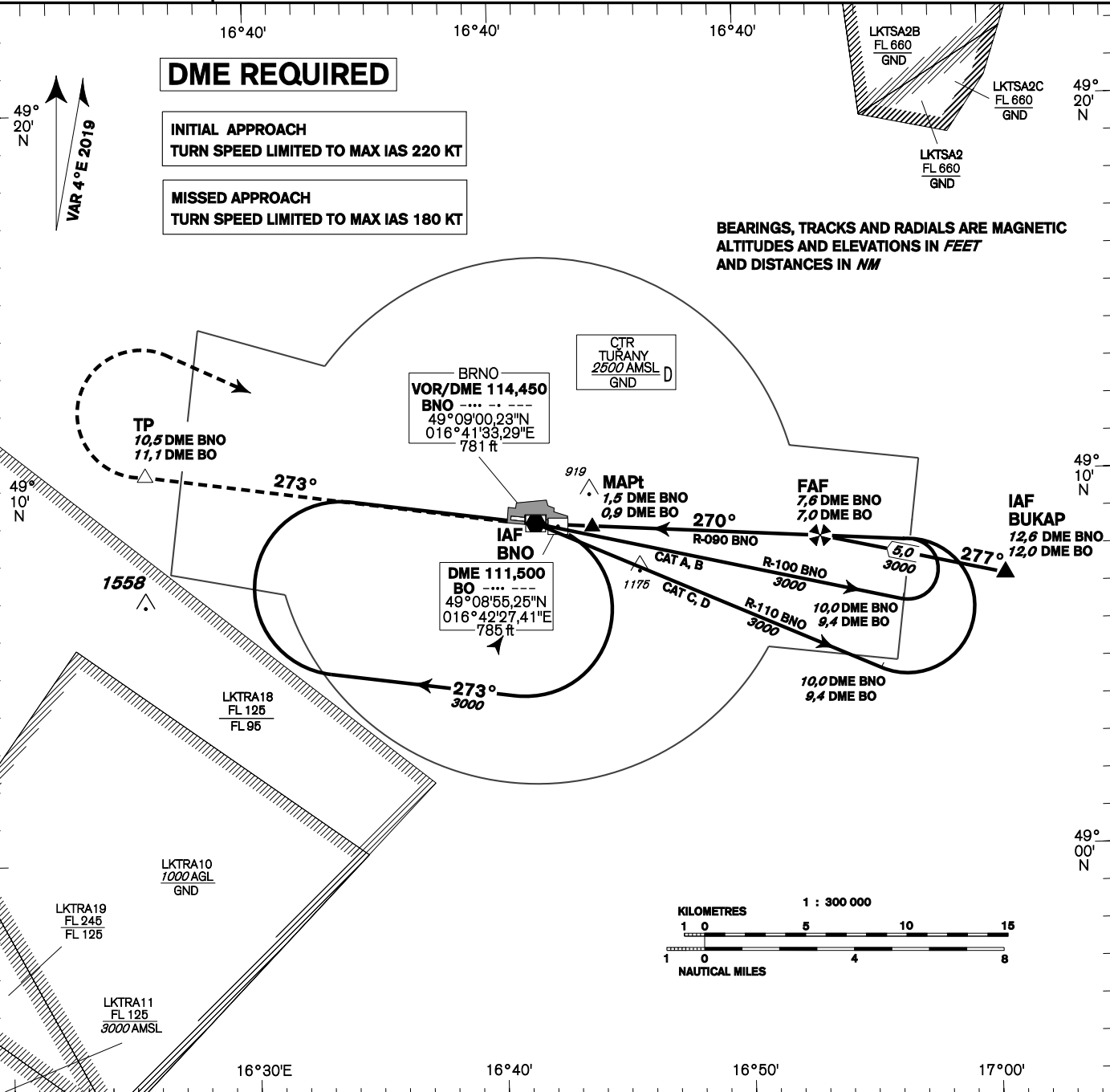
INSTRUMENT APPROACH CHART - ICAO

AERODROME ELEV 778
THR RWY 27 ELEV 771
OCH RELATED TO THR RWY 27

TUŘANY/TOWER 119,605
125,430
121,500
PRAHA RADAR 127,350
121,500



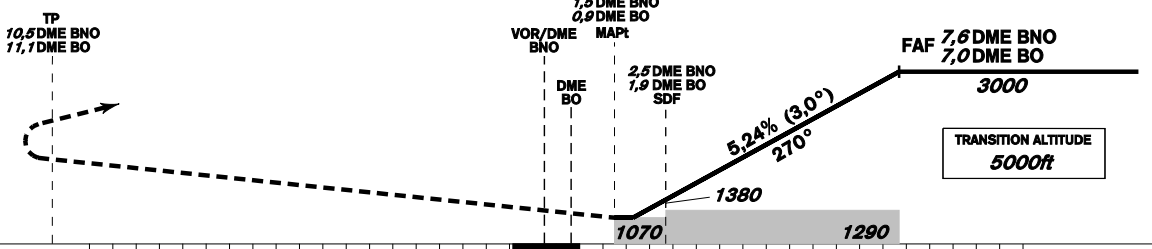
BRNO/Tuřany VOR RWY 27



change: FREQ CallSign BRNO RADAR to PRAHA RADAR

MISSED APPROACH:
Climb on R-273 BNO to 10,5 DME BNO, turn right to VOR/DME BNO in climbing to 3000ft.

THR 490859.12N 0164242.83E
ELEV 771



| OCA/OCH | A | B | C | D |
|------------------------|-------------|----------|----------|----------|
| Straight - in Approach | ft 1070/300 | | | |
| Circling | ft 1210 L/- | 1440 L/- | 1560 L/- | 1740 L/- |

| DME BNO NM | 8 | 7 | 6 | 5 | 4 | 3 | 2 |
|-------------------|---------|------|------|------|------|------|------|
| DME BO NM | 7,4 | 6,4 | 5,4 | 4,4 | 3,4 | 2,4 | 1,4 |
| DIST THR NM | 7,2 | 6,2 | 5,2 | 4,2 | 3,2 | 2,2 | 1,2 |
| ALTITUDES ft | 3130 | 2810 | 2490 | 2170 | 1850 | 1530 | 1220 |
| | kt | 80 | 100 | 120 | 140 | 160 | 180 |
| FAF - MAPt 6,1 NM | min:sec | 4:34 | 3:39 | 3:03 | 2:37 | 2:17 | 2:02 |
| Rate of descent | ft/min | 420 | 530 | 640 | 740 | 850 | 960 |

Timing is not authorized for defining the MAPt.