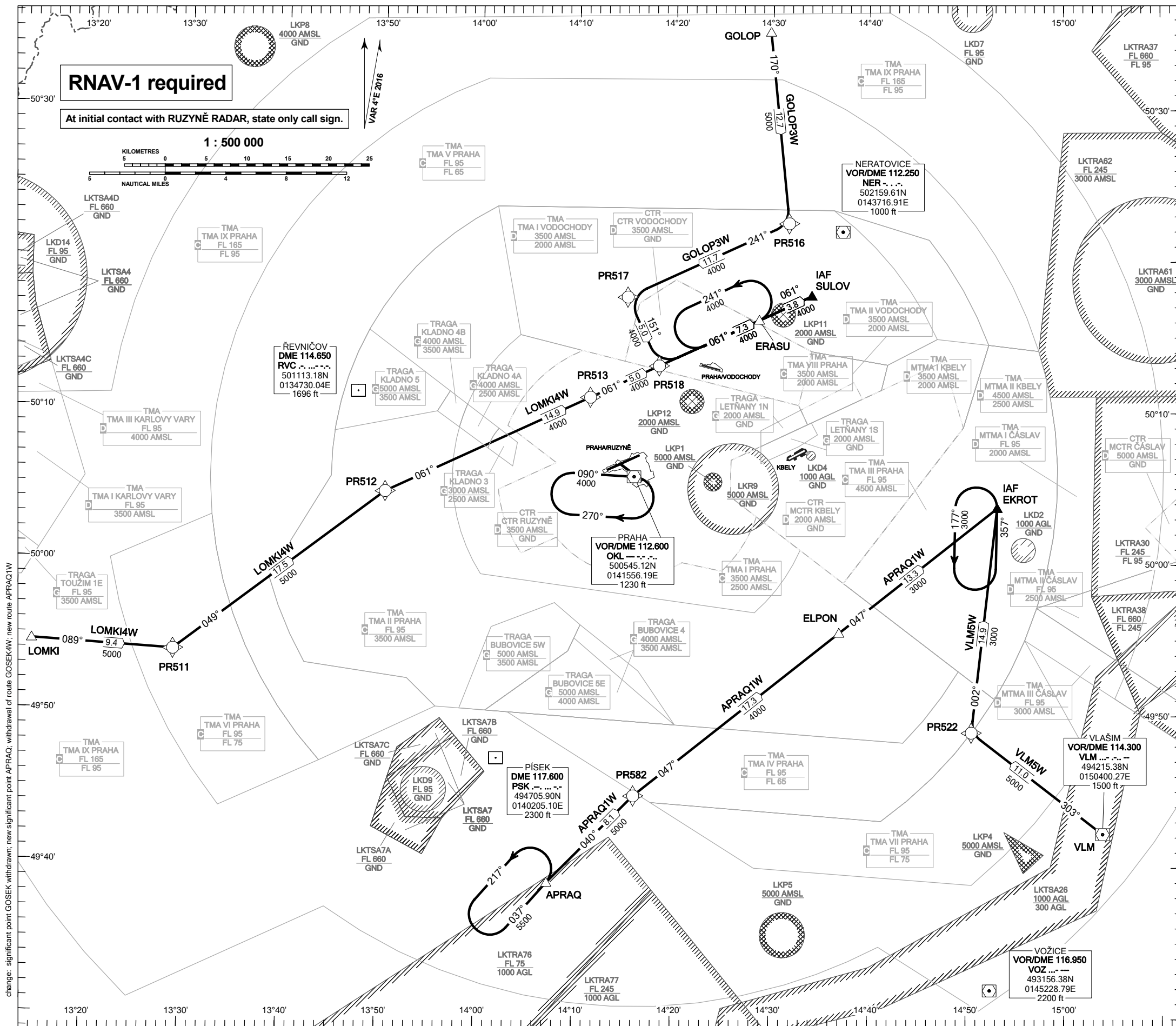


**RNAV STANDARD ARRIVAL CHART - INSTRUMENT
(STAR) - ICAO**

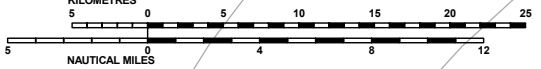
**KBELY
RNAV STAR RWY 24**



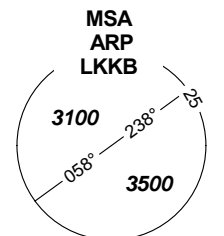
RNAV-1 required

At initial contact with RUZYNĚ RADAR, state only call sign.

1 : 500 000



KBELY APPROACH / RADAR	124.680
	291.050 (reserve)
KBELY TOWER	120.880
	134.730 (reserve)
KBELY PRECISION	126.760
	123.300 (reserve)
	315.000 (reserve)



BEARINGS, TRACKS AND RADIALS ARE MAGNETIC
ALTITUDES AND ELEVATIONS
ARE IN FEET
DISTANCES ARE IN NM

TRANSITION ALTITUDE
5000

change: significant point GOSEK withdrawn; new significant point APPRAQ; withdrawal of route GOSEK4W; new route APPRAQ1W