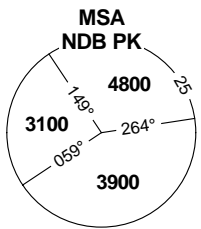
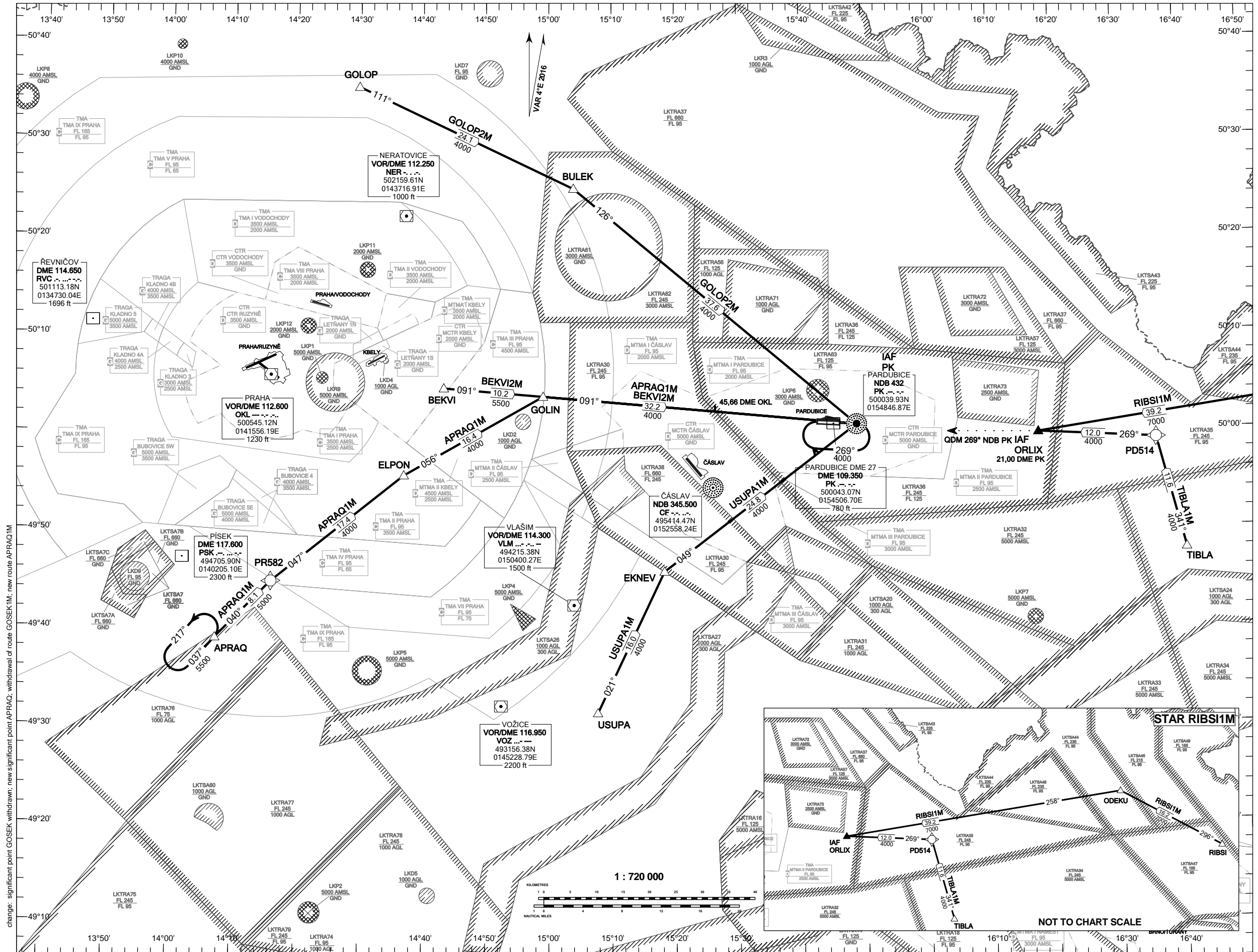


**RNAV STANDARD ARRIVAL CHART -
INSTRUMENT (STAR) - ICAO**

**PARDUBICE
RNAV STAR RWY 09-27**



BEARINGS, TRACKS AND
RADIALS ARE MAGNETIC
ALTITUDES AND ELEVATIONS
ARE IN FEET
DISTANCES ARE IN NM

TRANSITION ALTITUDE
5000

change: significant point GOSEK withdrawn; new significant point APPRAQ; withdrawal of route GOSEK1M; new route APPRAQ1M