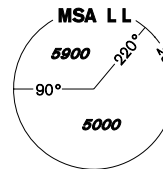


INSTRUMENT APPROACH CHART - ICAO

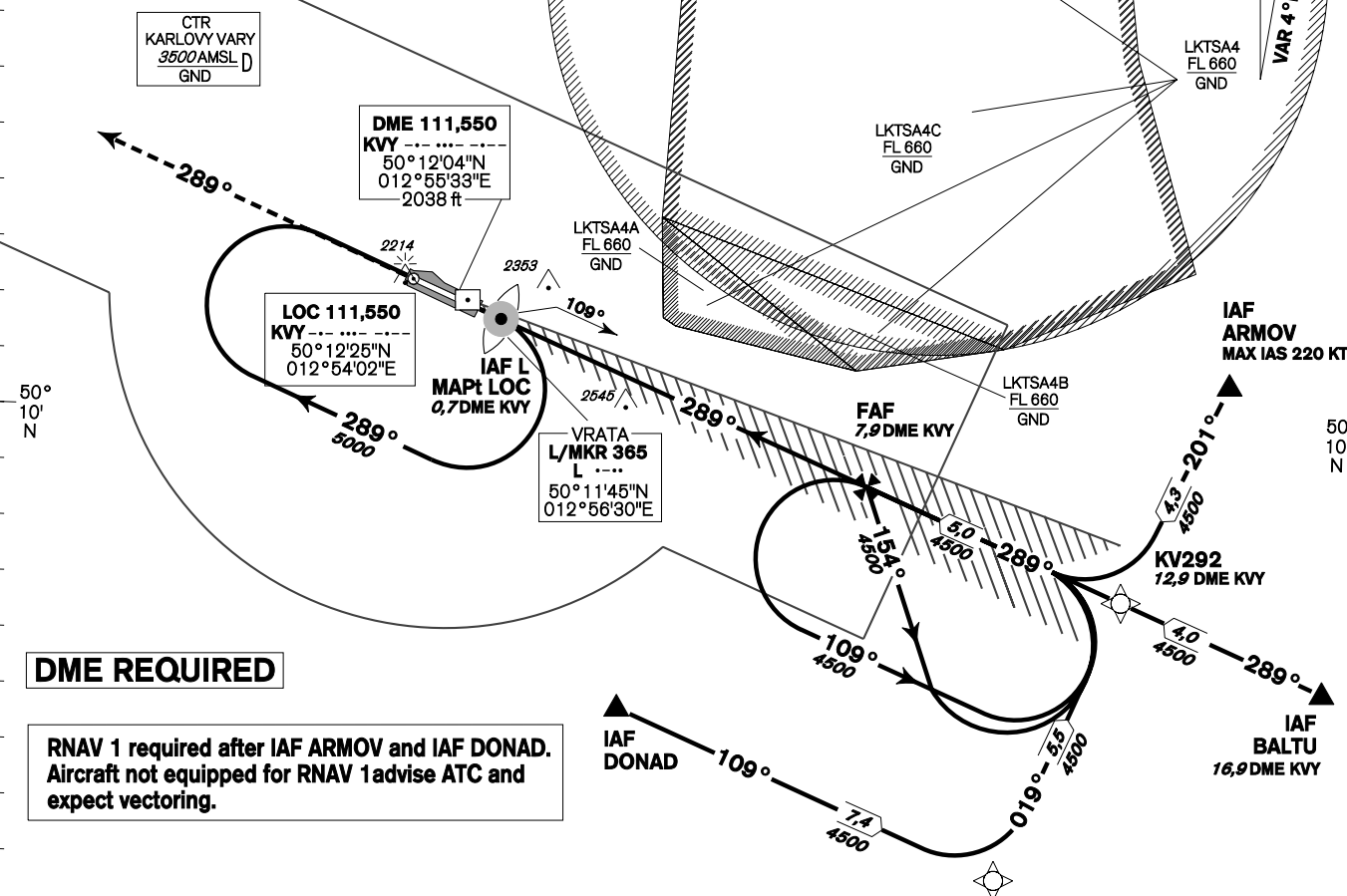
AERODROME ELEV 1989
THR RWY 29 ELEV 1985
OCH RELATED TO THR RWY 29

PRAHA RADAR 118,650
VARY TOWER 121,230
121,500



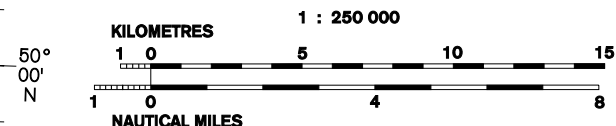
KARLOVY VARY ILS RWY 29

BEARINGS, TRACKS AND RADIALS ARE MAGNETIC
ALTITUDES AND ELEVATIONS IN FEET AND DISTANCES ARE IN NM



DME REQUIRED

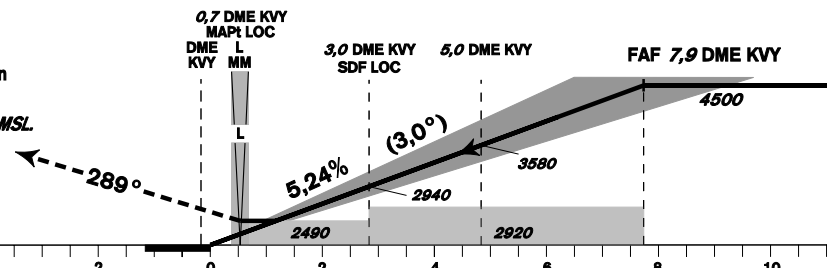
RNAV 1 required after IAF ARMOV and IAF DONAD.
Aircraft not equipped for RNAV 1 advise ATC and
expect vectoring.



MISSED APPROACH:

Climb on track 289° to 5000 ft AMSL,
expect vectoring. In case of RCF climb on
track 289° to 8,0 NM DME KVV and
turn right to L L in climbing to 5000 ft AMSL.

THR 501157.32N, 0125544.30E
ELEV 1985
NM FROM THR 29



TRANSITION ALTITUDE
5000ft

ILS RDH 54,1 ft

change: MISSED APPROACH

OCA/OCH	A	B	C	D
Cat I	ft 2194/206	2206/219	2214/227	2225/237
LOC	ft 2490/500			
Circling (south of AD only)	ft 2520/530	2520/530	2970/980	3160/1170

DME KVV (NM)	7	6	5	4	3	2	1
DIST THR (NM)	6,85	5,85	4,85	3,85	2,85	1,85	0,85
ALTITUDES (ft)	4220	3900	3580	3260	2940	2620	2310
LOC	kt 80	100	120	140	160		
FAF - MAPt 7,2 NM	min:sec 5:24	4:20	3:36	3:05	2:42		
Rate of descent (5,24%)	ft/min 420	530	640	740	850		

Timing is not authorised for determining the MAPt