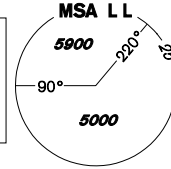


INSTRUMENT APPROACH CHART - ICAO

AERODROME ELEV 1989
THR RWY 11 ELEV 1988
OCH RELATED TO ARP

PRAHA RADAR 118,650
VARY TOWER 121,230
121,500

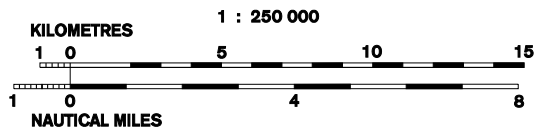
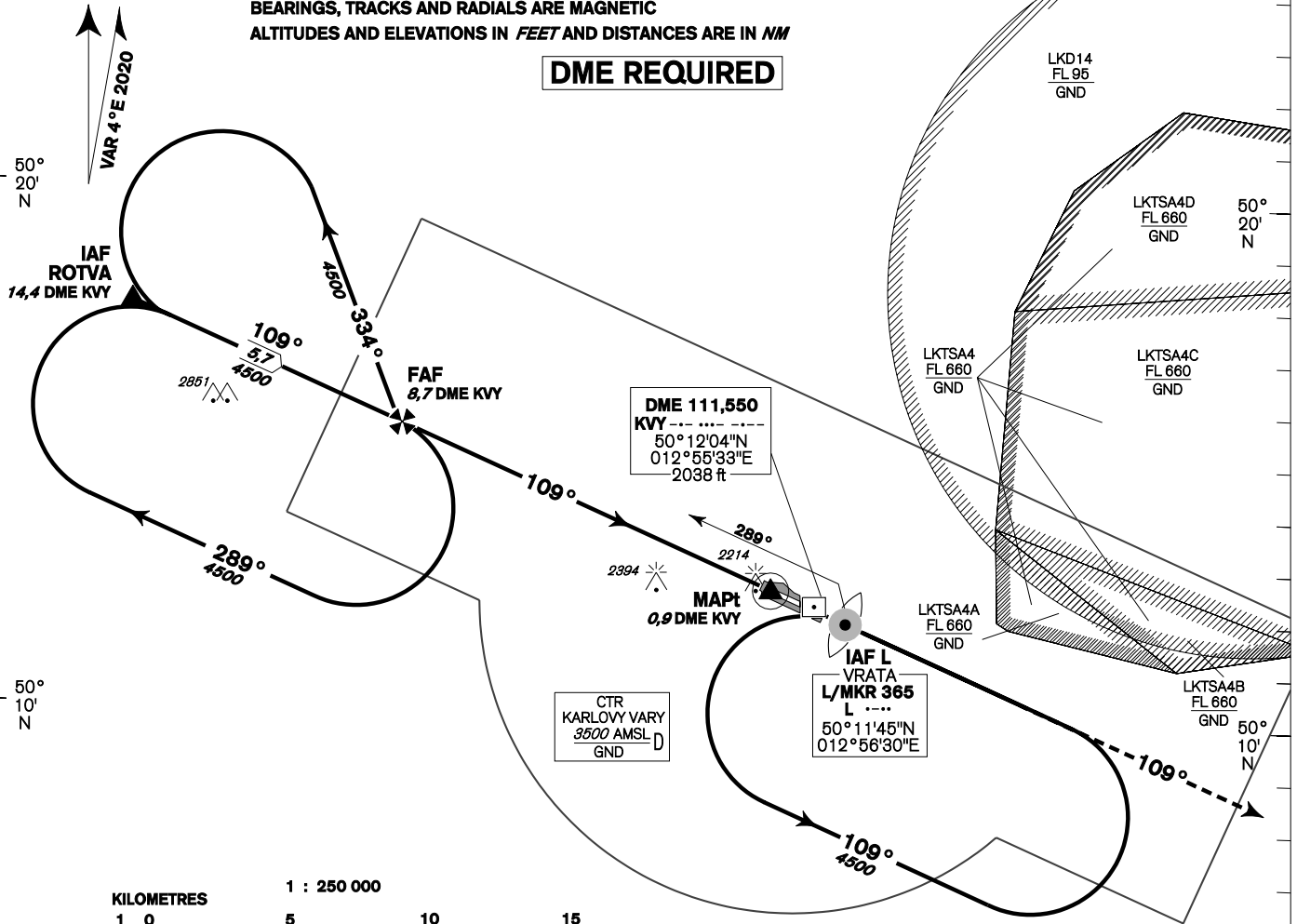


KARLOVY VARY NDB RWY 11

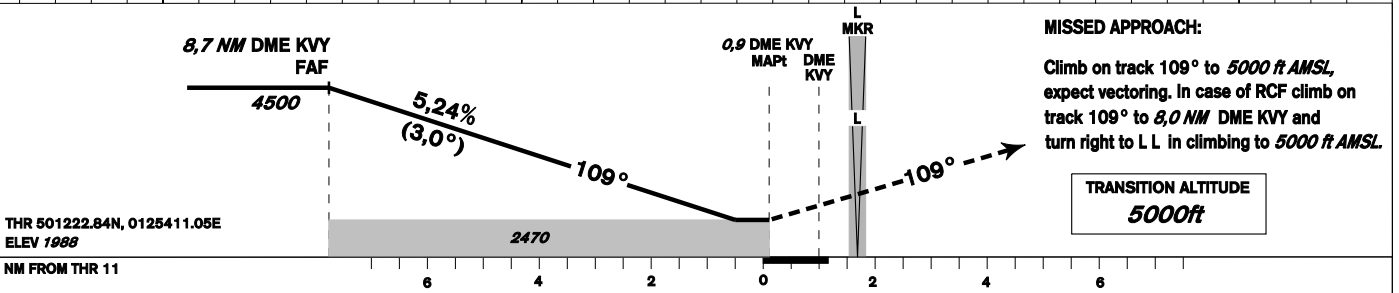
12°40'E 12°50'E 13°00'E 13°10'E

BEARINGS, TRACKS AND RADIALS ARE MAGNETIC
ALTITUDES AND ELEVATIONS IN FEET AND DISTANCES ARE IN NM

DME REQUIRED



12°40'E 12°50'E 13°00'E 13°10'E



MISSED APPROACH:
Climb on track 109° to 5000 ft AMSL, expect vectoring. In case of RCF climb on track 109° to 8,0 NM DME KVV and turn right to L L in climbing to 5000 ft AMSL.
TRANSITION ALTITUDE 5000ft

| OCA/OCH | A | B | C | D |
|-----------------------------|----------|----------|----------|-----------|
| Straight-in Approach | 2470/480 | | | |
| Circling (south of AD only) | 2520/530 | 2520/530 | 2970/980 | 3160/1170 |

| DME KVV NM | 7 | 6 | 5 | 4 | 3 | 2 | |
|-------------------------|---------|------|------|------|------|------|------|
| DIST THR (MAPt) | 6,1 | 5,1 | 4,1 | 3,1 | 2,1 | 1,1 | |
| ALTITUDES ft | 3970 | 3650 | 3330 | 3010 | 2700 | 2380 | |
| | kt | 80 | 100 | 120 | 140 | 160 | 180 |
| FAF - MAPt 7,7 NM | min:sec | 5:48 | 4:38 | 3:52 | 3:19 | 2:54 | 2:35 |
| Rate of descent (5,24%) | ft/min | 420 | 530 | 640 | 740 | 850 | 960 |

Timing is not authorised for determining the MAPt

change: MISSED APPROACH