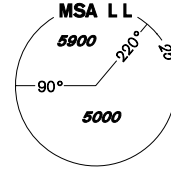


INSTRUMENT APPROACH CHART - ICAO

AERODROME ELEV **1989**
THR RWY 11 ELEV **1988**
OCH RELATED TO THR RWY 11

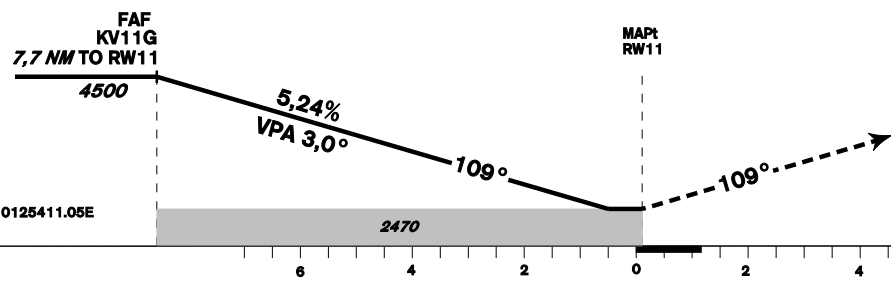
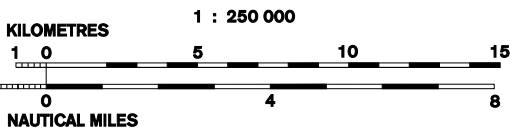
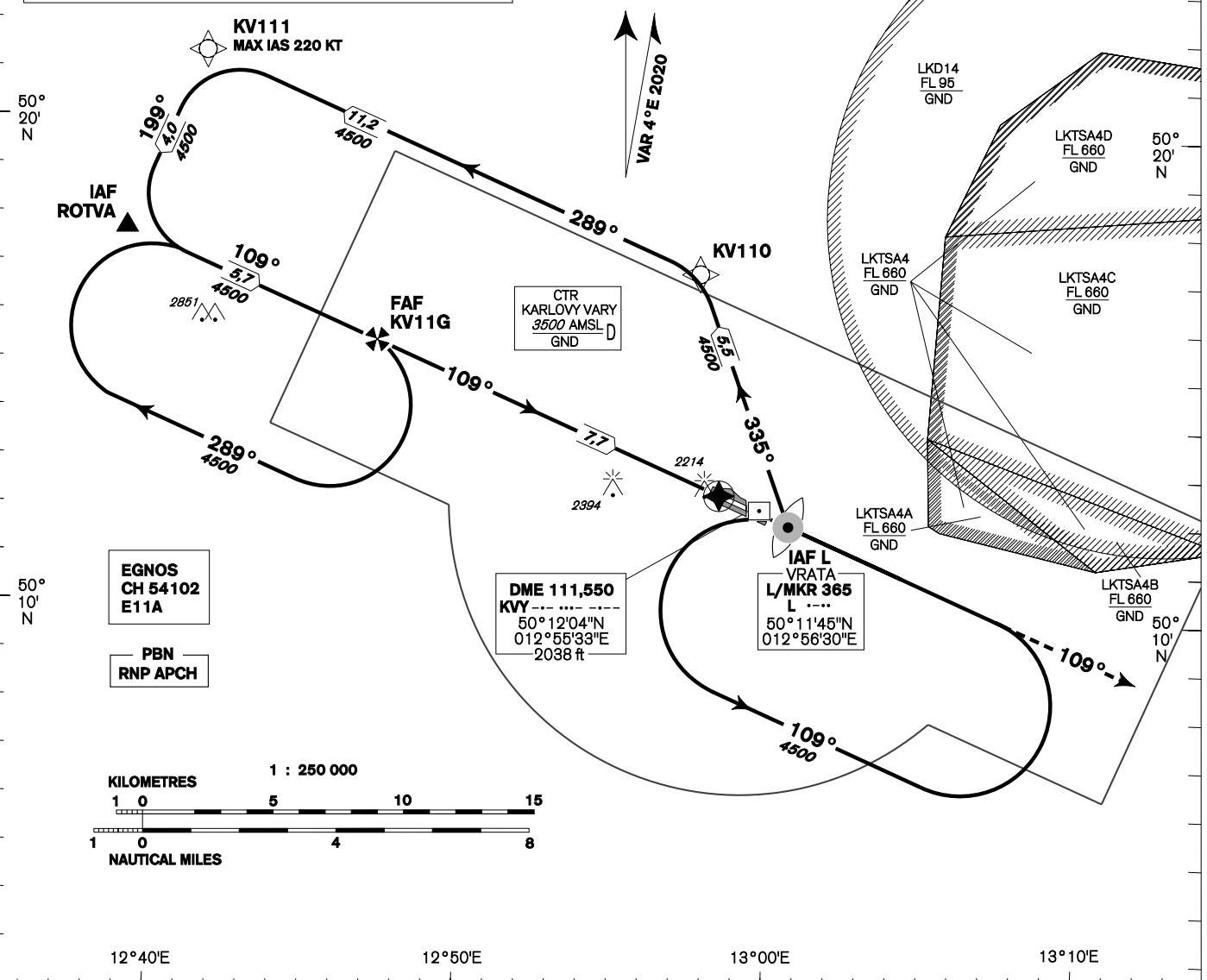
PRAHA RADAR **118,650**
VARY TOWER **121,230**
121,500



KARLOVY VARY RNP RWY 11

**MINIMUM TEMPERATURE FOR
BARO-VNAV OPERATIONS: - 20 °C**

BEARINGS, TRACKS AND RADIALS ARE MAGNETIC
ALTITUDES AND ELEVATIONS IN *FEET* AND DISTANCES ARE IN *NM*



MISSED APPROACH:
Climb on track 109° to **5000 ft AMSL**, expect vectoring. In case of RCF climb on track 109° to **8,0 NM** DME KVV and turn right to L L in climbing to **5000 ft AMSL**.
TRANSITION ALTITUDE 5000ft **RDH 49,2**

change: MISSED APPROACH

OCA/OCH	A	B	C	D
LNAV	ft 2470/480			
LNAV / VNAV	ft 2380/392			
LPV	ft 2349/361	ft 2361/373	ft 2369/381	ft 2380/392
Circling (south of AD only)	ft 2520/530	ft 2520/530	ft 2970/980	ft 3160/1170

DIST THR (MAPt)	7	6	5	4	3	2
ALTITUDES ft	4260	3940	3630	3310	2990	2670
FAF - MAPt 7,7 NM	kt 80	kt 100	kt 120	kt 140	kt 160	kt 180
Rate of descent (5,24%)	min:sec 5:48	min:sec 4:39	min:sec 3:52	min:sec 3:19	min:sec 2:54	min:sec 2:35
	ft/min 420	ft/min 530	ft/min 640	ft/min 740	ft/min 850	ft/min 960

Timing is not authorised for determining the MAPt

Posloupnost traťových bodů / Way point sequence

Od / From IAF ROTVA		
ROTVA	IAF	fly-by
KV11G	FAF	fly-by
RW11	MAPt	fly-over

Od / From IAF L L		
L L	IAF	fly-by
KV110		fly-by
KV111		fly-by
ROTVA		fly-by
KV11G	FAF	fly-by
RW11	MAPt	fly-over

Seznam traťových bodů / Way point list	
ROTVA	50 17 36,71 N 012 34 55,67 E
KV110	50 16 55,30 N 012 53 27,59 E
KV111	50 21 17,57 N 012 37 21,03 E
KV11G	50 15 23,91 N 012 43 05,90 E
L L	50 11 44,84 N 012 56 30,07 E

SBAS FAS Data Block

Vstupní data / Input Data

Parametry / Parameters	Hodnoty / Values
Operation Type	0
SBAS Provider	1 (EGNOS)
Airport Identifier	LKKV
Runway	11
Runway Letter	0 (None)
Approach Performance Designator	0
Route Indicator	
Reference Path Data Selector	0
Reference Path Identifier	E11A
LTP/FTP Latitude	501222.8455N
LTP/FTP Longitude	0125511.0575E
LTP/FTP Ellipsoidal Height (metres)	651.8
FPAP Latitude	501157.3265N
Delta FPAP Latitude (seconds)	-25.5190
FPAP Longitude	0125544.3045E
Delta FPAP Longitude (seconds)	33.2470
Threshold Crossing Height	49.2
TCH Units Selector	0 (feet)
Glidepath Angle (degrees)	3.00
Course Width (metres)	105.00
Length Offset (metres)	0
HAL (metres)	40.0
VAL (metres)	50.0

Výstupní data / Output Data

Parametry / Parameters	Hodnoty / Values
Data Block	10 16 0B 0B 0C 0B 00 00 01 31 31 05 7B D5 8B 15 A3 67 8B 05 76 2D A2 38 FF BE 03 01 EC 01 2C 01 64 00 C8 FA 27 CD D0 68
Calculated CRC Value	27CDD068

Required Additional Data (not CRC wrapped)

These additional data are not required for CRC calculation, but they need to be provided to datahouses for procedure coding in ARINC 424 records

Parametry / Parameters	Hodnoty / Values
ICAO Code	LK
LTP/FTP Orthometric Height (metres)	605.8