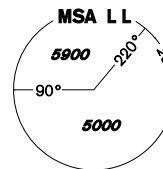


INSTRUMENT APPROACH CHART - ICAO

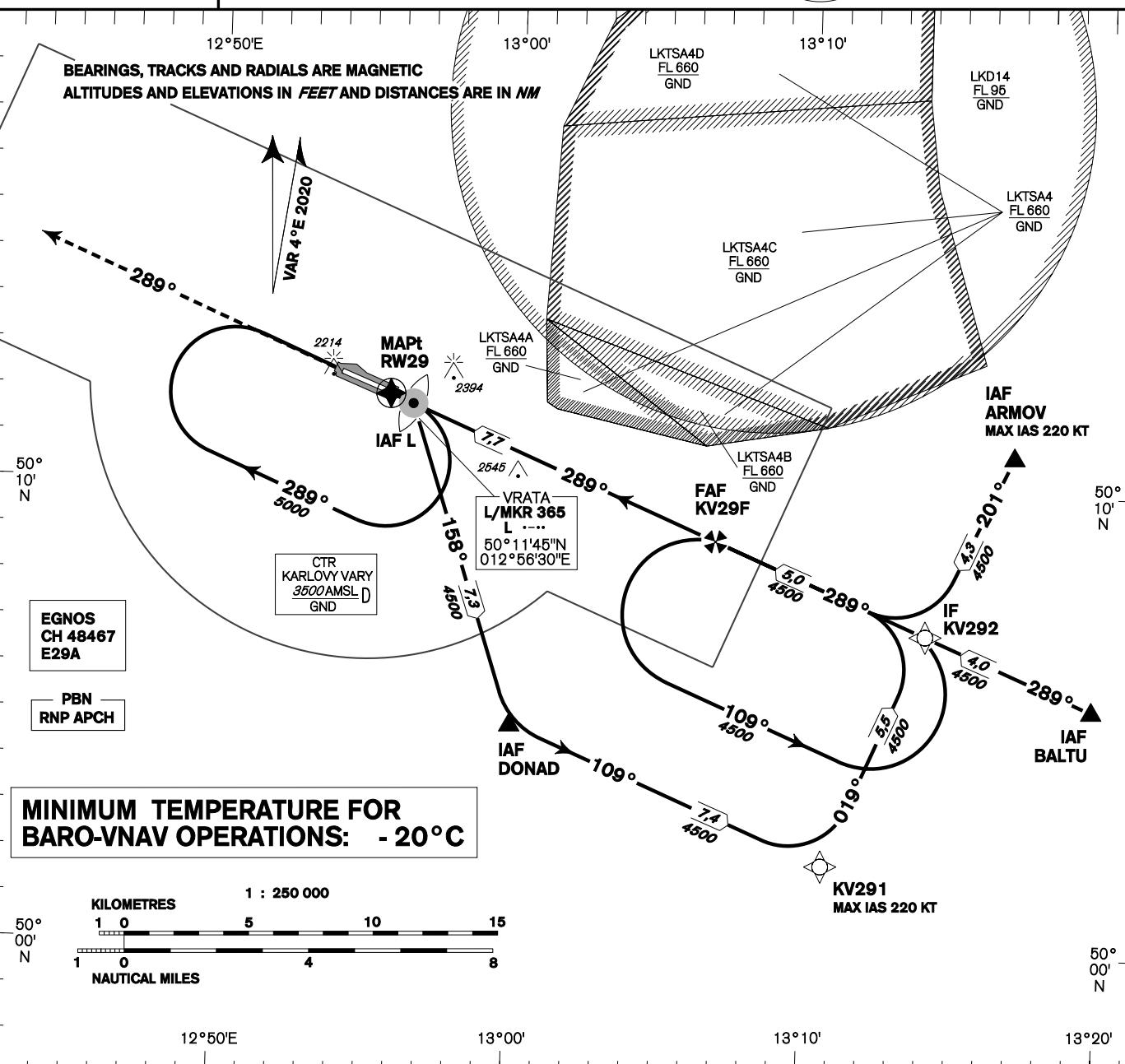
AERODROME ELEV 1989
THR RWY 29 ELEV 1985
OCH RELATED TO THR RWY 29

PRAHA RADAR 118,650
VARY TOWER 121,230
121,500

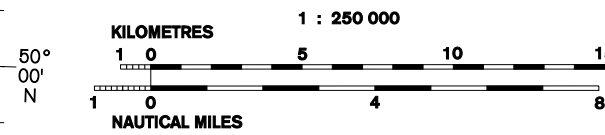


KARLOVY VARY RNP RWY 29

BEARINGS, TRACKS AND RADIALS ARE MAGNETIC
ALTITUDES AND ELEVATIONS IN FEET AND DISTANCES ARE IN NM



MINIMUM TEMPERATURE FOR
BARO-VNAV OPERATIONS: - 20°C

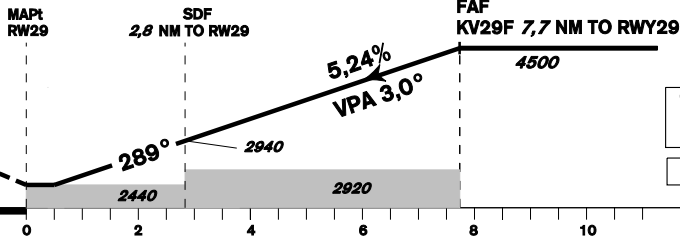


MISSED APPROACH:

Climb on track 289° to 5000 ft AMSL, expect vectoring. In case of RCF climb on track 289° to 8,0 NM DME KVV and turn right to L L in climbing to 5000 ft AMSL.

THR 501157.32N, 0125544.30E
ELEV 1985

NM FROM THR 29



TRANSITION ALTITUDE
5000ft

RDH 49,2

change: MISSED APPROACH

OCA/OCH	A	B	C	D	
LNAV	ft	2440/ 450			
LNAV / VNAV	ft	2419/ 432			
LPV	ft	2239/ 250	2243/ 255	2251/ 263	2261/ 274
Circling (south of AD only)	ft	2520/ 530	2520/530	2970/ 980	3160/ 1170

DIST THR (MAPt)	7	6	5	4	3	2	1
ALTITUDES ft	4260	3940	3630	3310	2990	2670	2350
	kt	80	100	120	140	160	180
FAF - MAPt 7,7 NM	min:sec	5:48	4:39	3:52	3:19	2:54	2:35
Rate of descent (5,24%)	ft/min	420	530	640	740	850	960

Timing is not authorised for determining the MAPt

Posloupnost traťových bodů / Way point sequence

Od / From IAF ARMOV		
ARMOV	IAF	fly-by
KV292	IF	fly-by
KV29F	FAF	fly-by
RW29	MAPt	fly-over

Od / From IAF DONAD		
DONAD	IAF	fly-by
KV291		fly-by
KV292	IF	fly-by
KV29F	FAF	fly-by
RW29	MAPt	fly-over

Seznam traťových bodů / Way point list	
ARMOV	50 10 50,76 N 013 16 50,52 E
BALTU	50 05 22,06 N 013 19 35,48 E
DONAD	50 04 50,93 N 013 00 00,00 E
KV291	50 01 55,29 N 013 10 35,25 E
KV292	50 06 56,23 N 013 13 56,91 E
KV29F	50 08 54,77 N 013 06 48,58 E
L L	50 11 44,84 N 012 56 30,07 E

Od / From IAF BALTU		
BALTU	IAF	fly-by
KV292	IF	fly-by
KV29F	FAF	fly-by
RW29	MAPt	fly-over

Od / From IAF L L		
L L	IAF	fly-by
DONAD		fly-by
KV291		fly-by
KV292	IF	fly-by
KV29F	FAF	fly-by
RW29	MAPt	fly-over

SBAS FAS Data Block

Vstupní data / Input Data

Parametry / Parameters	Hodnoty / Values
Operation Type	0
SBAS Provider	1 (EGNOS)
Airport Identifier	LKKV
Runway	29
Runway Letter	0 (None)
Approach Performance Designator	0
Route Indicator	
Reference Path Data Selector	0
Reference Path Identifier	E29A
LTP/FTP Latitude	501157.3265N
LTP/FTP Longitude	0125544.3045E
LTP/FTP Ellipsoidal Height (metres)	651.1
FPAP Latitude	501222.8455N
Delta FPAP Latitude (seconds)	25.5190
FPAP Longitude	0125411.0575E
Delta FPAP Longitude (seconds)	-93.2470
Threshold Crossing Height	49.2
TCH Units Selector	0 (feet)
Glidepath Angle (degrees)	3.00
Course Width (metres)	105.00
Length Offset (metres)	0
HAL (metres)	40.0
VAL (metres)	50.0

Výstupní data / Output Data

Parametry / Parameters	Hodnoty / Values
Data Block	10 16 0B 0B 0C 1D 00 00 01 39 32 05 1D 0E 8B 15 61 6B 8C 05 6F 2D 5E C7 00 82 27 FD EC 01 2C 01 64 00 C8 FA 93 C4 AD 90
Calculated CRC Value	93C4AD90

Required Additional Data (not CRC wrapped)

These additional data are not required for CRC calculation, but they need to be provided to datahouses for procedure coding in ARINC 424 records

Parametry / Parameters	Hodnoty / Values
ICAO Code	LK
LTP/FTP Orthometric Height (metres)	605.0