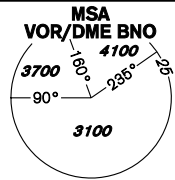


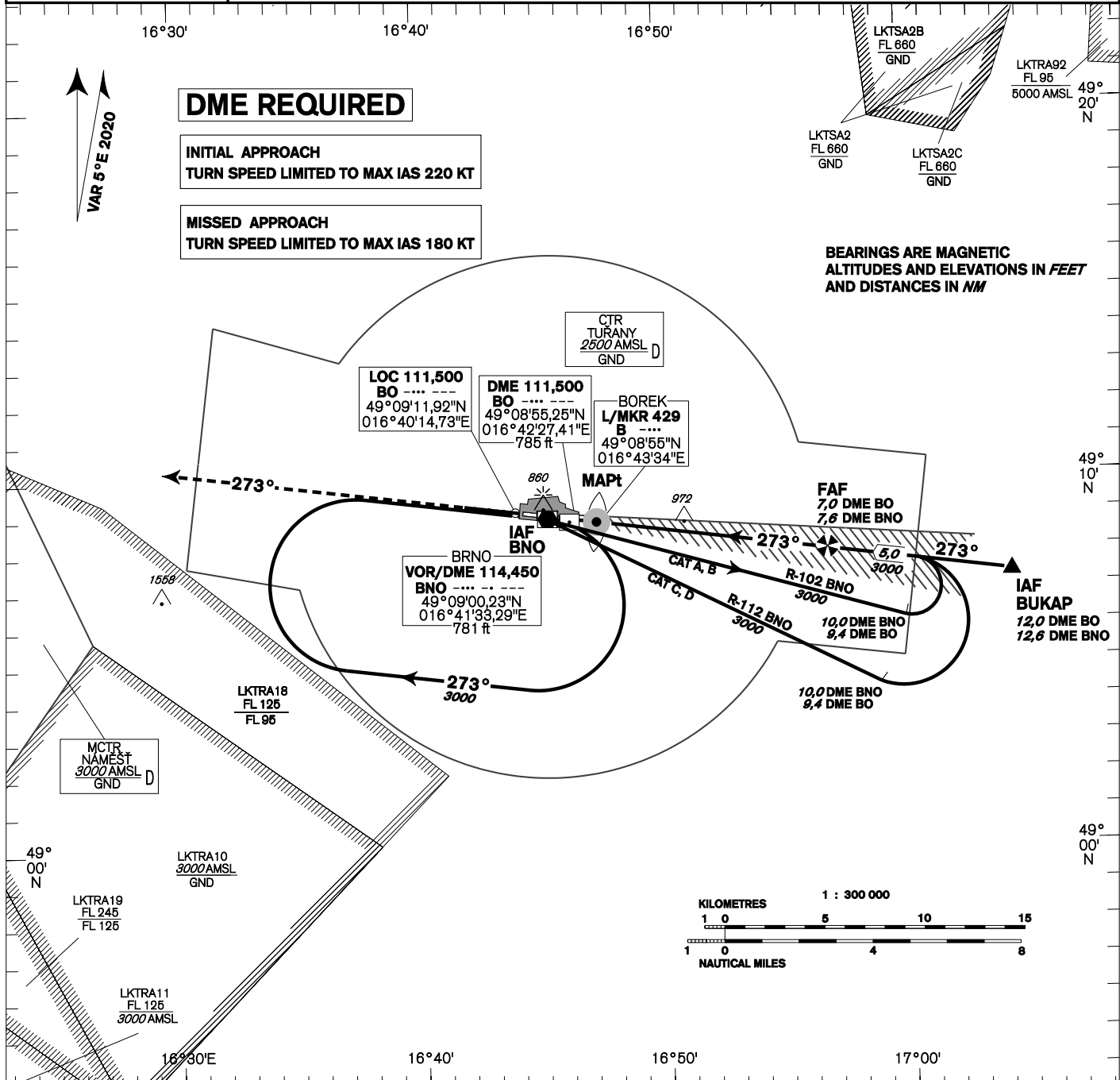
# INSTRUMENT APPROACH CHART - ICAO

AERODROME ELEV 778  
THR RWY 27 ELEV 771  
OCH RELATED TO THR RWY 27

|              |         |
|--------------|---------|
| TUŘANY/TOWER | 119,805 |
|              | 125,430 |
|              | 121,500 |
| PRAHA RADAR  | 127,350 |
|              | 121,500 |



## BRNO/Tuřany ILS RWY 27

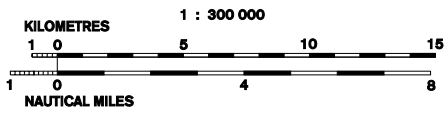


**DME REQUIRED**

**INITIAL APPROACH**  
TURN SPEED LIMITED TO MAX IAS 220 KT

**MISSED APPROACH**  
TURN SPEED LIMITED TO MAX IAS 180 KT

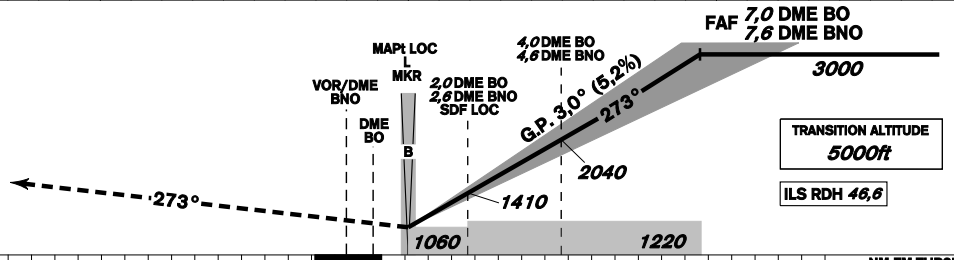
BEARINGS ARE MAGNETIC  
ALTITUDES AND ELEVATIONS IN FEET  
AND DISTANCES IN NM



**MISSED APPROACH:**

Climb on track 273° to 4000 ft AMSL, expect vectoring. In case of RCF climb to 8,0 NM DME BNO and turn right to VOR/DME BNO in climbing to 4000 ft AMSL

THR 490859.12N 0164242.83E  
ELEV 771



| OCA/OCH                     |       | A           | B       | C       | D       |
|-----------------------------|-------|-------------|---------|---------|---------|
| Straight-in                 | Cat I | ft 920/149  | 932/162 | 940/169 | 951/180 |
|                             | LOC   | ft 1060/290 |         |         |         |
| Circling (South of AD Only) |       | ft 1210/-   | 1440/-  | 1560/-  | 1740/-  |

| DME BO NM         | 8    | 7            | 6    | 5    | 4    | 3    | 2    | 1    |
|-------------------|------|--------------|------|------|------|------|------|------|
| DME BNO NM        | 8,6  | 7,6          | 6,6  | 5,6  | 4,6  | 3,6  | 2,6  | 1,6  |
| DIST THR NM       | 7,8  | 6,8          | 5,8  | 4,8  | 3,8  | 2,8  | 1,8  | 0,8  |
| ALTITUDES ft      | 3320 | 3000         | 2680 | 2360 | 2040 | 1720 | 1410 | 1090 |
|                   |      | Kt 80        | 100  | 120  | 140  | 160  | 180  |      |
| FAF - MAPt 6,3 NM |      | min:sec 4:43 | 3:46 | 3:09 | 2:42 | 2:21 | 2:06 |      |
| Rate of descent   |      | ft/min 420   | 530  | 640  | 740  | 850  | 960  |      |

Timing is not authorized for defining the MAPt.