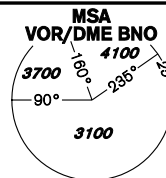


INSTRUMENT APPROACH CHART - ICAO

AERODROME ELEV 778
THR RWY 09 ELEV 764
OCH RELATED TO THR RWY 09

TUŘANY/TOWER 119,605
125,430
121,500
PRAHA RADAR 127,350
121,500



**BRNO/Tuřany
NDB
RWY 09**

16°20'E 16°30' 16°40' 16°50' 17°00'

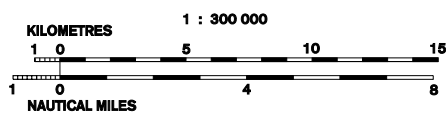
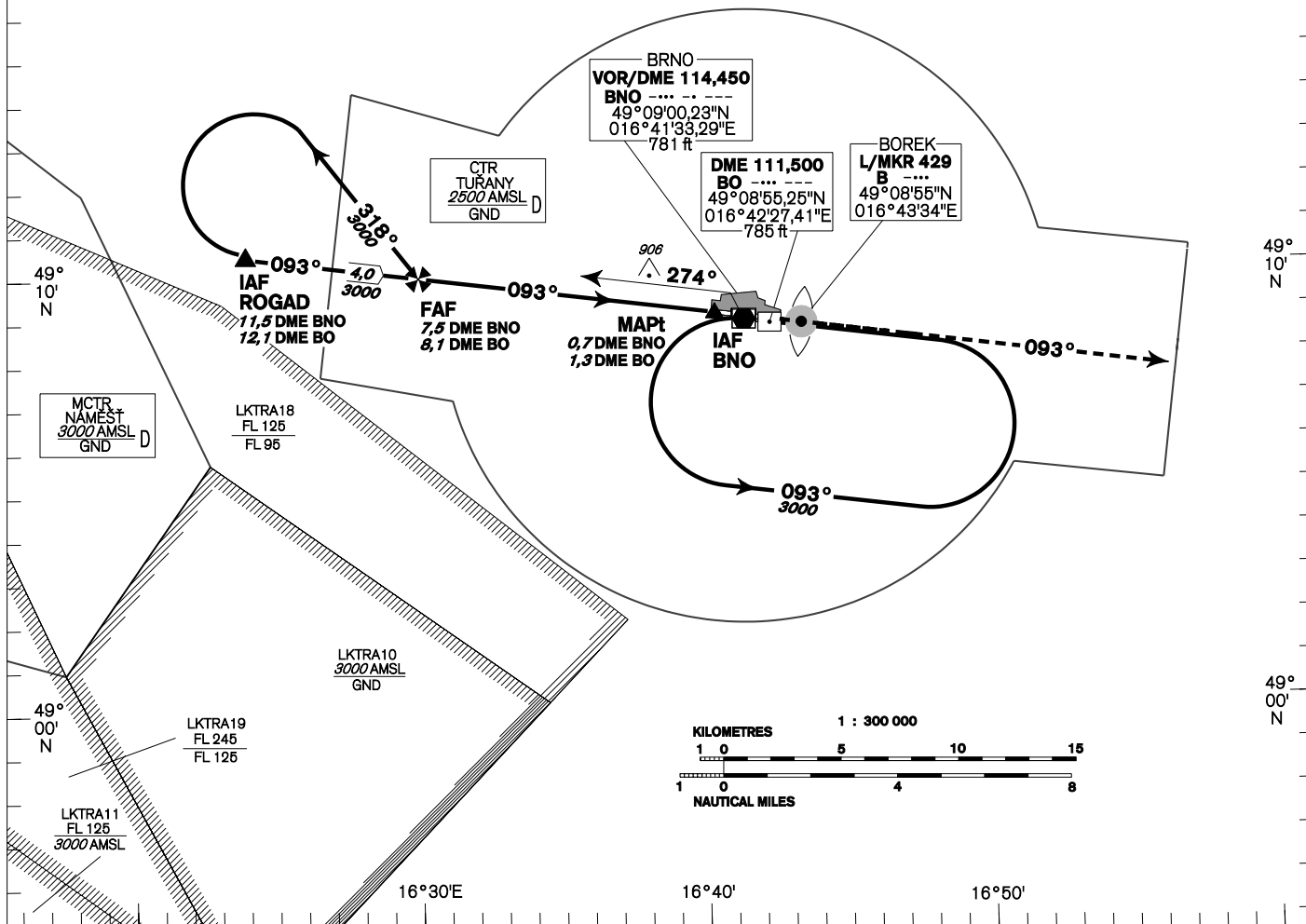
VAR 5°E 2020

DME REQUIRED

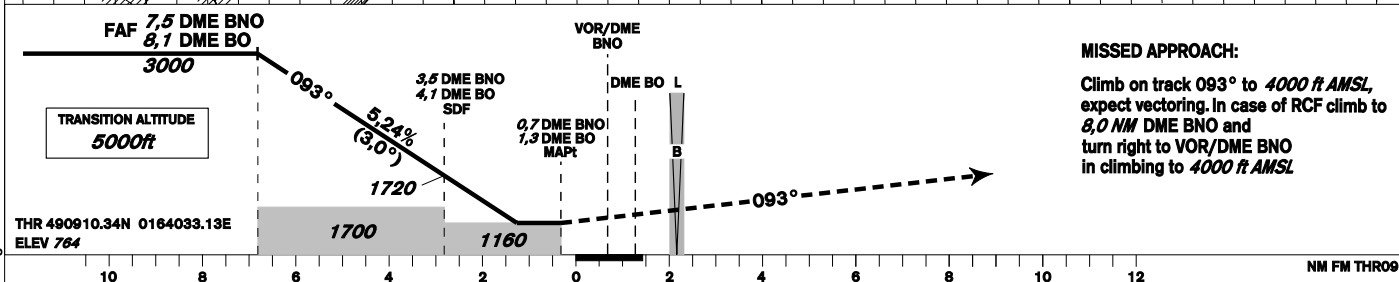
INITIAL APPROACH
TURN SPEED LIMITED TO MAX IAS 220 KT

BEARINGS, TRACKS AND RADIALS ARE MAGNETIC
ALTITUDES AND ELEVATIONS IN FEET
AND DISTANCES IN NM

LKTA2B FL 660 GND
LKTA2 FL 660 GND
LKTA2C FL 660 GND



change: MISSED APPROACH



MISSED APPROACH:
Climb on track 093° to 4000 ft AMSL, expect vectoring. In case of RCF climb to 8,0 NM DME BNO and turn right to VOR/DME BNO in climbing to 4000 ft AMSL

OCA/OCH	A	B	C	D	DME BNO NM	8	7	6	5	4	3	2
Straight - in Approach	ft 1160/390				DME BO NM	8,6	7,6	6,6	5,6	4,6	3,6	2,6
Circling (South of AD Only)	ft 1210/-	1440/-	1560/-	1740/-	DIST THR NM	7,3	6,3	5,3	4,3	3,3	2,3	1,3
					ALTITUDES ft	3150	2830	2510	2190	1870	1550	1240

	kt	80	100	120	140	160	180
FAF - MAPt 6,9 NM	min:sec	5:09	4:07	3:26	2:57	2:35	2:17
Rate of descent	ft/min	420	530	640	740	850	960

Timing is not authorized for defining the MAPt.