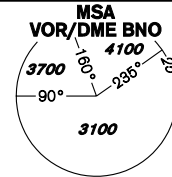


# INSTRUMENT APPROACH CHART - ICAO

AERODROME ELEV 778  
THR RWY 09 ELEV 764  
OCH RELATED TO THR RWY 09

TUŘANY/TOWER 119,605  
125,430  
121,500  
PRAHA RADAR 127,350  
121,500



**BRNO/Tuřany  
VOR  
RWY 09**

16°20'E

16°30'

16°40'

16°50'

17°00'

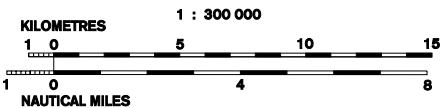
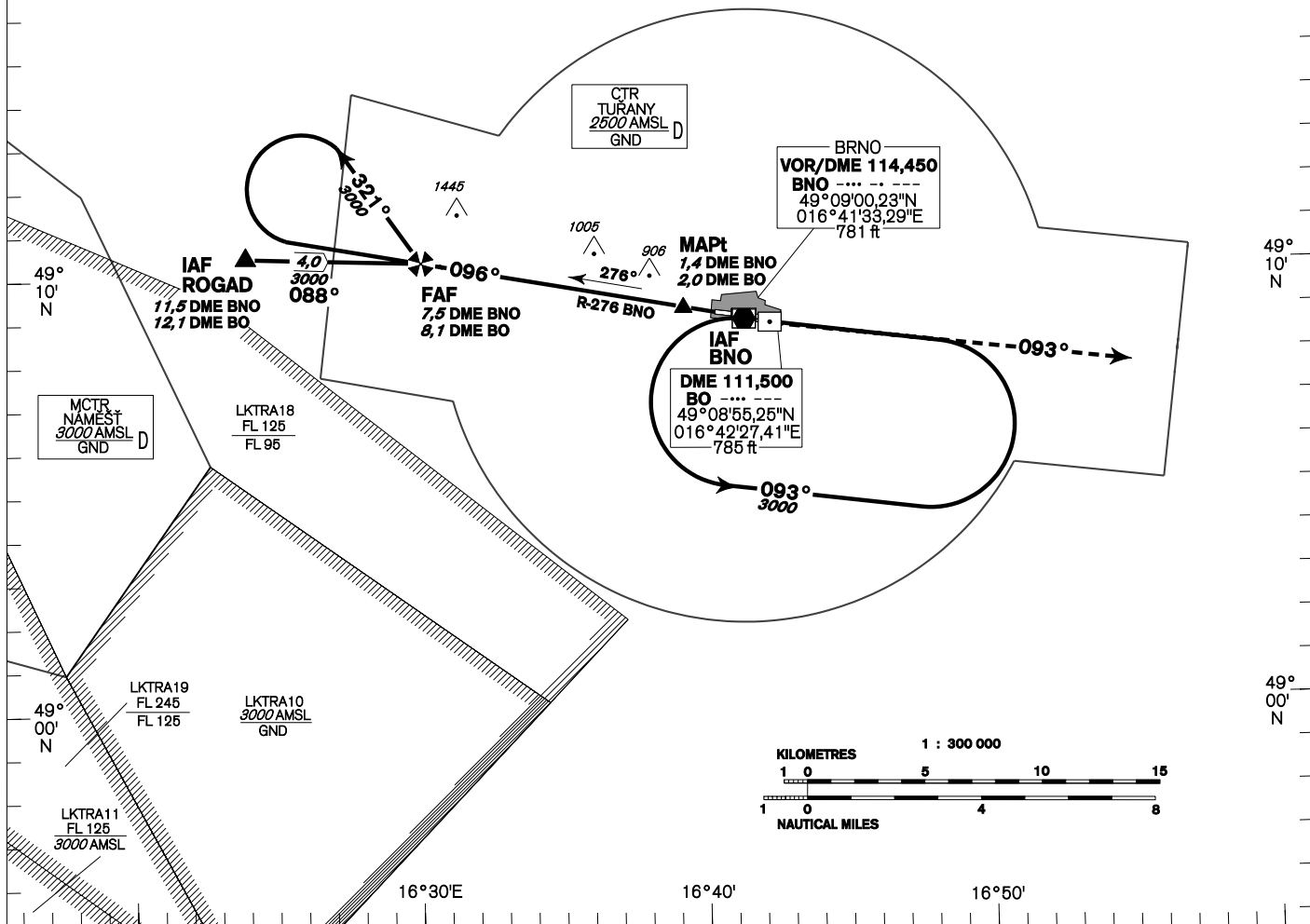


**DME REQUIRED**

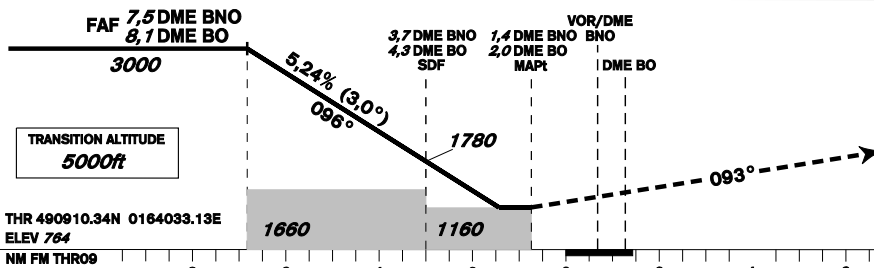
INITIAL APPROACH  
TURN SPEED LIMITED TO MAX IAS 220 KT

BEARINGS, TRACKS AND RADIALS ARE MAGNETIC  
ALTITUDES AND ELEVATIONS IN FEET  
AND DISTANCES IN NM

LKTA2B  
FL 660  
GND  
LKTA2  
FL 660  
GND  
LKTA2C  
FL 660  
GND



change: MISSED APPROACH



**MISSED APPROACH:**  
Climb on track 093° to 4000 ft AMSL, expect vectoring. In case of RCF climb to 8,0 NM DME BNO and turn right to VOR/DME BNO in climbing to 4000 ft AMSL

THR 490910.34N 0184033.13E  
ELEV 764  
NM FM THRO9

OCA/OCH	A	B	C	D
Straight - in Approach	1160/390			
Circling (South of AD Only)	1210/-	1440/-	1560/-	1740/-

DME BNO NM	8	7	6	5	4	3	2
DME BO NM	8,6	7,6	6,6	5,6	4,6	3,6	2,6
DIST THR NM	7,3	6,3	5,3	4,3	3,3	2,3	1,3
ALTITUDES ft	3150	2830	2510	2190	1870	1550	1240
	kt	80	100	120	140	160	180
FAF - MAPt 6,1 NM	min:sec	4:35	3:40	3:03	2:37	2:17	2:02
Rate of descent	ft/min	420	530	640	740	850	960

Timing is not authorized for defining the MAPt.