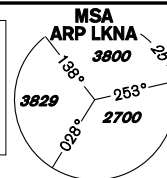


INSTRUMENT APPROACH CHART - ICAO

AERODROME ELEV 1547
THR RWY 12 ELEV 1547
THR RWY 30 ELEV 1496
OCH RELATED TO THR RWY 30

NÁMĚŠŤ APPROACH/ 118,155 266,200 reserve
RADAR
PRECISION 283,900 123,300 reserve
TOWER 126,505 121,180 reserve



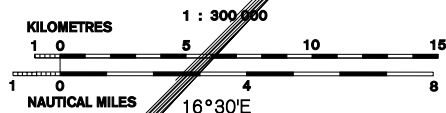
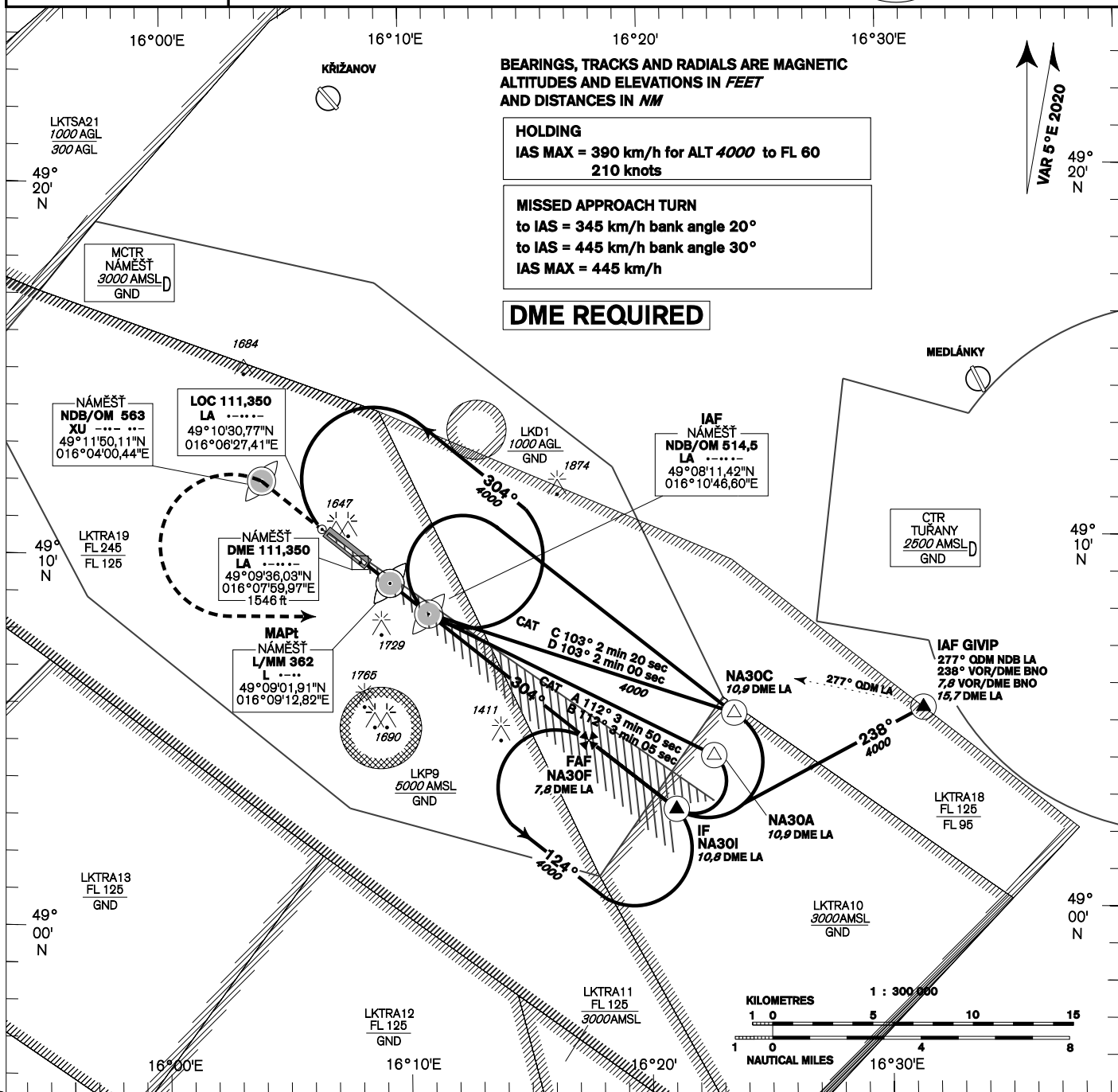
NÁMĚŠŤ ILS RWY 30

BEARINGS, TRACKS AND RADIALS ARE MAGNETIC
ALTITUDES AND ELEVATIONS IN FEET
AND DISTANCES IN NM

HOLDING
IAS MAX = 390 km/h for ALT 4000 to FL 60
210 knots

MISSED APPROACH TURN
to IAS = 345 km/h bank angle 20°
to IAS = 445 km/h bank angle 30°
IAS MAX = 445 km/h

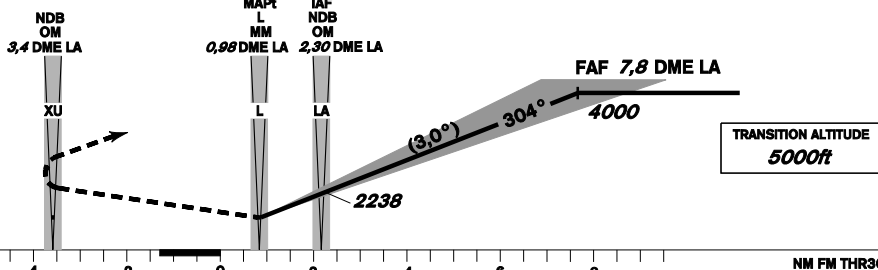
DME REQUIRED



MISSED APPROACH:
Proceed to NDB XU
in climbing 4000ft
passing NDB XU turn left to NDB LA

ILS RDH 49,2 ft

THR 490933.73N 0160813.58E
ELEV 1496
DISTANCE IN NM FROM THR RWY 30



change: FREQ 119,830 (reserve) to 121,180 (reserve)

OCA/OCH		A	B	C	D		
Straight-in Approach	Cat 1 ft	1725 / 230	1736 / 240	1745 / 249	1755 / 259		
	GP INOP	1840 / 344					
Circling NORTH OF AD ONLY ft		1936 R/-	1988 R/-	2086 R/-	2185 R/-		
DME LA NM	6,0	5,0	4,0	3,0	2,0	1,0	0,8
ALTITUDES ft	3406	3088	2769	2451	2133	1815	1752

kt	81	100	122	141	162	184	
km/h	150	185	225	260	300	340	
time FAF - MAPt 6,9 NM	min:sec	5:05	4:07	3:23	2:56	2:32	2:14
Rate of descent	m / s	2,2	2,7	3,3	3,8	4,4	5,0
	ft / min	433	532	650	748	866	994

Seznam traťových bodů / Way point list		
LA (NDB)	49 08 12 N	016 10 47 E
L (L)	49 09 02 N	016 09 13 E
NA30A	49 04 16 N	016 22 23 E
NA30C	49 05 24 N	016 23 14 E
NA30I	49 02 52 N	016 20 55 E
NA30F	49 04 44 N	016 17 31 E
XU (NDB)	49 11 50 N	016 04 00 E