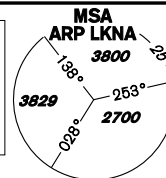


INSTRUMENT APPROACH CHART - ICAO

AERODROME ELEV **1547**
THR RWY 12 ELEV **1547**
THR RWY 30 ELEV **1496**
OCH RELATED TO THR RWY 12

NÁMEŠŤ APPROACH/ 118,155 266,200 reserve
RADAR
PRECISION 283,900 123,300 reserve
TOWER 126,505 121,180 reserve



NÁMEŠŤ NDB RWY 12

BEARINGS, TRACKS AND RADIALS ARE MAGNETIC
ALTITUDES AND ELEVATIONS IN FEET
AND DISTANCES IN NM

VAR 5° E 2020

IAF ODUKO
142° QDM XU
289° VOR/DME BNO
35,0 VOR/DME BNO
16,8 DME LA

LK TSA21
1000 AGL
300 AGL

LK TSA24
1000 AGL
300 AGL

LK TRA33
FL 245
5000 AMSL

KŘÍŽANOV

HOLDING
IAS MAX = 390 km/h for ALT 4000 to FL 60
210 knots

MISSED APPROACH TURN
to IAS = 345 km/h bank angle 20°
to IAS = 445 km/h bank angle 30°
IAS MAX = 445 km/h

49° 20' N

IAF NA12A
113° QDM NDB XU
11,7 DME LA

NA12R
12,2 DME LA
144° QDM NDB XU

IF NA12I
R-031 OKF
23,4 VOR/DME OKF
11,8 DME LA

FAF NA12F
R-039 OKF
23,5 VOR/DME OKF
8,7 DME LA

MAPt
NÁMEŠŤ
L/MM 362

49° 10' 51,58" N
016° 05' 48,58" E

NA12C
102° QDM NDB XU
11,7 DME LA

LK TSA22
1000 AGL
300 AGL

LK TRA17
3500 AMSL
GND

LK TRA15
FL 125
300 AGL

CAT A 283° 5 min 00 sec
B 283° 3 min 45 sec

CAT C 282° 2 min 20 sec
D 282° 2 min 00 sec

IAF NÁMEŠŤ
NDB/OM 563
XU
49° 11' 50,11" N
016° 04' 00,44" E

NÁMEŠŤ
DME 111,350
LA
49° 09' 36,03" N
016° 07' 59,97" E
1546 ft

MCTR
NÁMEŠŤ
3000 AMSL
GND

NÁMEŠŤ
NDB/OM 514,5
LA
49° 08' 11,42" N
016° 10' 46,60" E

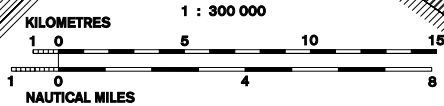
LK TRA14
FL 125
GND

LK TRA13
FL 125
GND

LK P9
5000 AMSL
GND

LK TRA18
FL 125
FL 95

LK TRA10
3000 AMSL
GND



R-039 VOR/DME OKF
23,5 VOR/DME OKF
8,7 DME LA
FAF

IAF NDB OM
3,45 DME LA
XU

MAPt L MM
1,97 DME LA
X

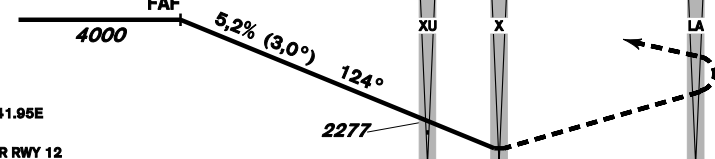
NDB OM
2,3 DME LA
LA

MISSED APPROACH:
Proceed to NDB LA
in climbing 4000ft
passing NDB turn left to NDB XU

In the case of RCF on final approach track
without landing clearance
follow the missed approach procedure

TRANSITION ALTITUDE
5000ft

THR 491022,96N 0160641,95E
ELEV 1547
DISTANCE IN NM FROM THR RWY 12



NM FM THR12

OCA/OCH		A	B	C	D
Straight-in Approach	NDB ft		1857 / 308		
	PAR ft		1857 / 308		
Circling (NORTH ONLY)	ft	1936	1988	2086	2185

	kt	81	100	122	141	162	184
FAF - MAPt 6,9 NM	km/h	150	185	225	260	300	340
Rate of descent	min:sec	5:05	4:07	3:23	2:56	2:32	2:14
	m/s	2,2	2,7	3,3	3,8	4,4	5,0
	ft/min	433	532	650	748	866	984

Timing is not authorized for defining the MAPt.

change: FREQ: 119,830 (reserve) to 121,180 (reserve)

Seznam traťových bodů / Way point list		
XU (NDB)	49 11 50 N	016 04 00 E
X (L)	49 10 52 N	016 05 49 E
NA12A	49 15 44 N	015 52 45 E
NA12C	49 14 16 N	015 51 42 E
NA12R	49 19 36 N	015 57 04 E
NA12I	49 17 03 N	015 53 58 E
NA12F	49 15 08 N	015 57 42 E
LA (NDB)	49 08 12 N	016 10 47 E