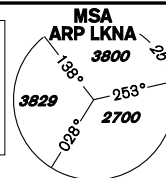


INSTRUMENT APPROACH CHART - ICAO

AERODROME ELEV 1547
THR RWY 12 ELEV 1547
THR RWY 30 ELEV 1496
OCH RELATED TO THR RWY 30

NÁMEŠŤ APPROACH/ 118,155 266,200 reserve
RADAR
PRECISION 283,900 123,300 reserve
TOWER 126,505 121,180 reserve



NÁMEŠŤ NDB RWY 30

16°00'E 16°10'E 16°20' 16°30'E

BEARINGS, TRACKS AND RADIALS ARE MAGNETIC
ALTITUDES AND ELEVATIONS IN FEET
AND DISTANCES IN NM

HOLDING
IAS MAX = 390 km/h for ALT 4000 to FL 60
210 knots

MISSED APPROACH TURN
to IAS = 345 km/h bank angle 20°
to IAS = 445 km/h bank angle 30°
IAS MAX = 445 km/h

VAR 5° E 2020
 49° 20' N

LK TSA21
1000 AGL
300 AGL

49° 20' N

MCTR NÁMEŠŤ
3000 AMSL D
GND

NÁMEŠŤ NDB/OM 563
XU ---
49°11'50,11"N
016°04'00,44"E

KŘIŽANOV

LKD1
1000 AGL
GND

IAF NÁMEŠŤ NDB/OM 514,5
LA ---
49°08'11,42"N
016°10'46,60"E

MEDLÁNKY

CTR TURÁNY
2500 AMSL D
GND

LK TRA19
FL 245
FL 125

49° 10' N

NÁMEŠŤ DME 111,350
LA ---
49°09'36,03"N
016°07'59,97"E
1546 ft

MAPt NÁMEŠŤ
L/MM 362
L ---
49°09'01,91"N
016°09'12,82"E

LKP9
5000 AMSL
GND

CAT C 103° 2 min 20 sec
D 103° 2 min 00 sec
4000

NA30C 277° QDM LA
10,9 DME LA

IAF GIVIP
277° QDM NDB LA
238° VOR/DME BNO
7,8 VOR/DME BNO
15,7 DME LA

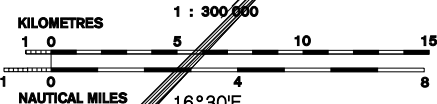
49° 10' N

LK TRA13
FL 125
GND

49° 00' N

LK TRA12
FL 125
GND

LK TRA11
FL 125
3000 AMSL



MISSED APPROACH:

Proceed to NDB XU
in climbing 4000ft
passing NDB XU turn left to NDB LA

In the case of RCF on final approach track
without landing clearance
follow the missed approach procedure

THR 490933.73N 0160813.58E
ELEV 1496
DISTANCE IN NM FROM THR RWY 30

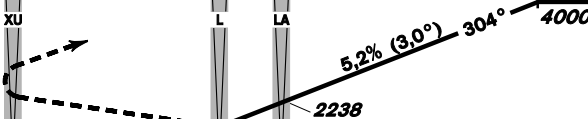
NDB OM
3,4 DME LA

MAPt L
MM
0,88 DME LA

IAF NDB OM
2,30 DME LA

FAF R-250 VOR/DME BNO
16,4 VOR/DME BNO

TRANSITION ALTITUDE
5000ft



change: FREQ 119,630 (reserve) to 121,180 (reserve)

| OCA/OCH | | A | B | C | D |
|-----------------------|--------|------------|------|------|------|
| Straight-in Approach | NDB ft | 1873 / 377 | | | |
| | PAR ft | 1873 / 377 | | | |
| Circling (NORTH ONLY) | ft | 1936 | 1988 | 2086 | 2185 |

| kt | 81 | 100 | 122 | 141 | 162 | 184 |
|----------|------|------|------|------|------|------|
| km/h | 150 | 185 | 225 | 260 | 300 | 340 |
| min:sec | 5:05 | 4:07 | 3:23 | 2:56 | 2:32 | 2:14 |
| m / s | 2,2 | 2,7 | 3,3 | 3,8 | 4,4 | 5,0 |
| ft / min | 433 | 532 | 650 | 748 | 866 | 984 |

Timing is not authorized for defining the MAPt.

| Seznam traťových bodů / Way point list | | |
|--|------------|-------------|
| LA (NDB) | 49 08 12 N | 016 10 47 E |
| L (L) | 49 09 02 N | 016 09 13 E |
| NA30A | 49 04 16 N | 016 22 23 E |
| NA30C | 49 05 24 N | 016 23 14 E |
| NA30I | 49 02 52 N | 016 20 55 E |
| NA30F | 49 04 44 N | 016 17 31 E |
| XU (NDB) | 49 11 50 N | 016 04 00 E |