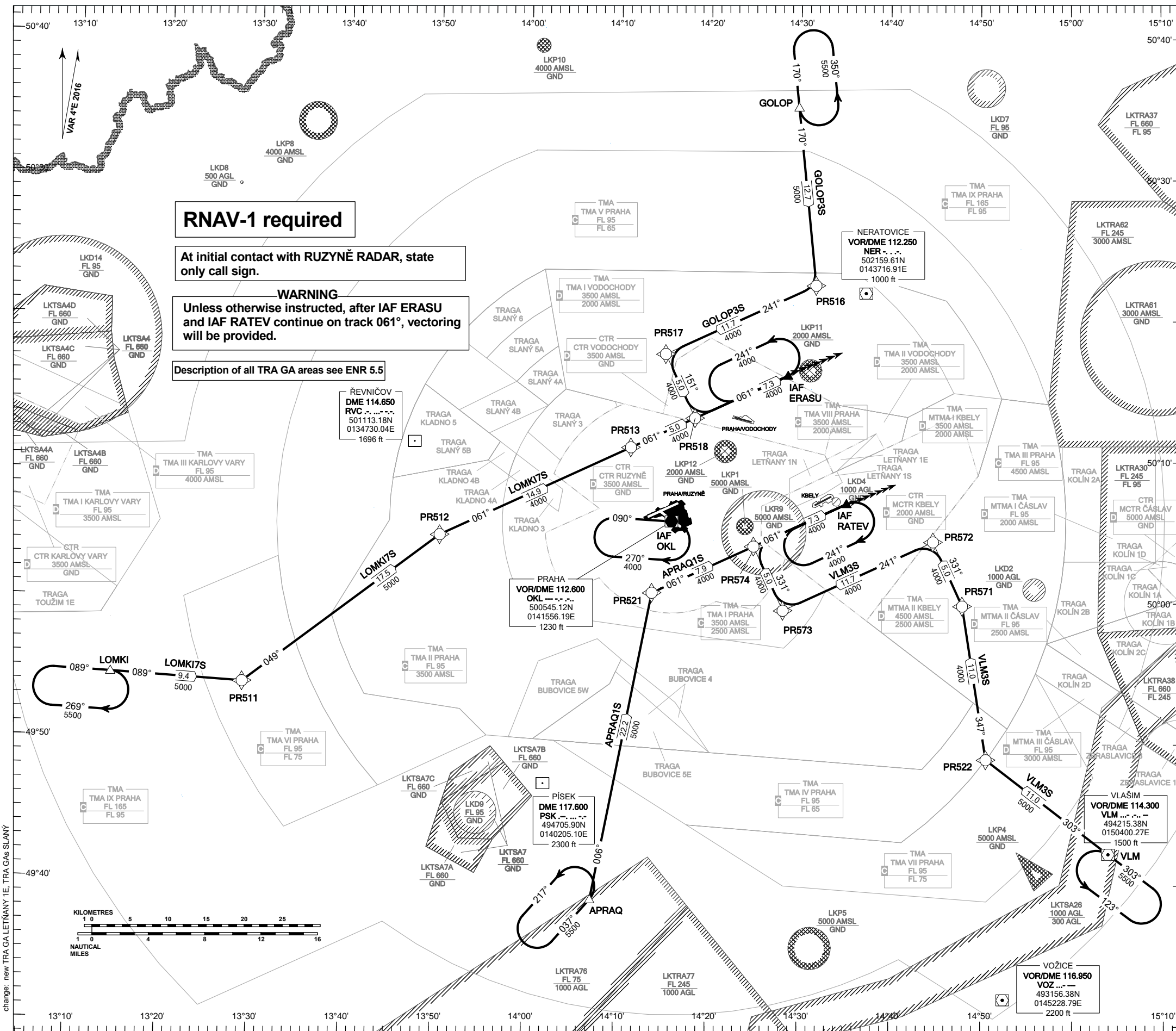


**RNAV STANDARD ARRIVAL CHART - INSTRUMENT
(STAR) - ICAO**

**PRAHA/RUZYŇĚ
RNAV STAR RWY 24**



RNAV-1 required

At initial contact with RUZYŇĚ RADAR, state only call sign.

WARNING
Unless otherwise instructed, after IAF ERASU and IAF RATEV continue on track 061°, vectoring will be provided.

Description of all TRA GA areas see ENR 5.5

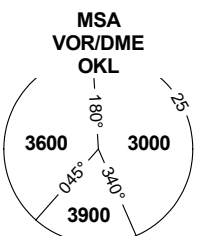
REVNÍČOV
DME 114.650
RVC
501113.18N
0134730.04E
1696 ft

PRAHA
VOR/DME 112.600
OKL
500545.12N
0141556.19E
1230 ft

VLAŠIM
VOR/DME 114.300
VLM
494215.38N
0150400.27E
1500 ft

VOŽICE
VOR/DME 116.950
VOZ
493156.38N
0145228.79E
2200 ft

PRAHA APPROACH / RADAR	120.530
RUZYŇĚ APPROACH / RADAR	127.580
RUZYŇĚ RADAR / INFORMATION	118.310
SUPPLEMENTARY FREQ APP	136.080
RUZYŇĚ DELIVERY	120.060
RUZYŇĚ TOWER	134.560
SUPPLEMENTARY FREQ TWR	118.110
RUZYŇĚ GROUND	121.910
RUZYŇĚ ATIS	122.160
EMERGENCY FREQ	121.500



TRANSITION ALTITUDE
5000

BEARINGS, TRACKS AND
RADIALS ARE MAGNETIC
ALTITUDES AND ELEVATIONS
ARE IN FEET
DISTANCES ARE IN NM

Speed restriction see AIP AD 2-LKPR-30, 2.22.4.2.1