

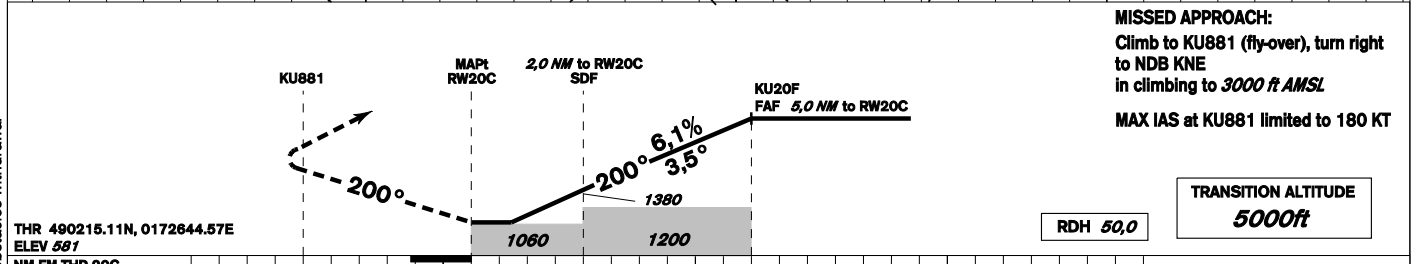
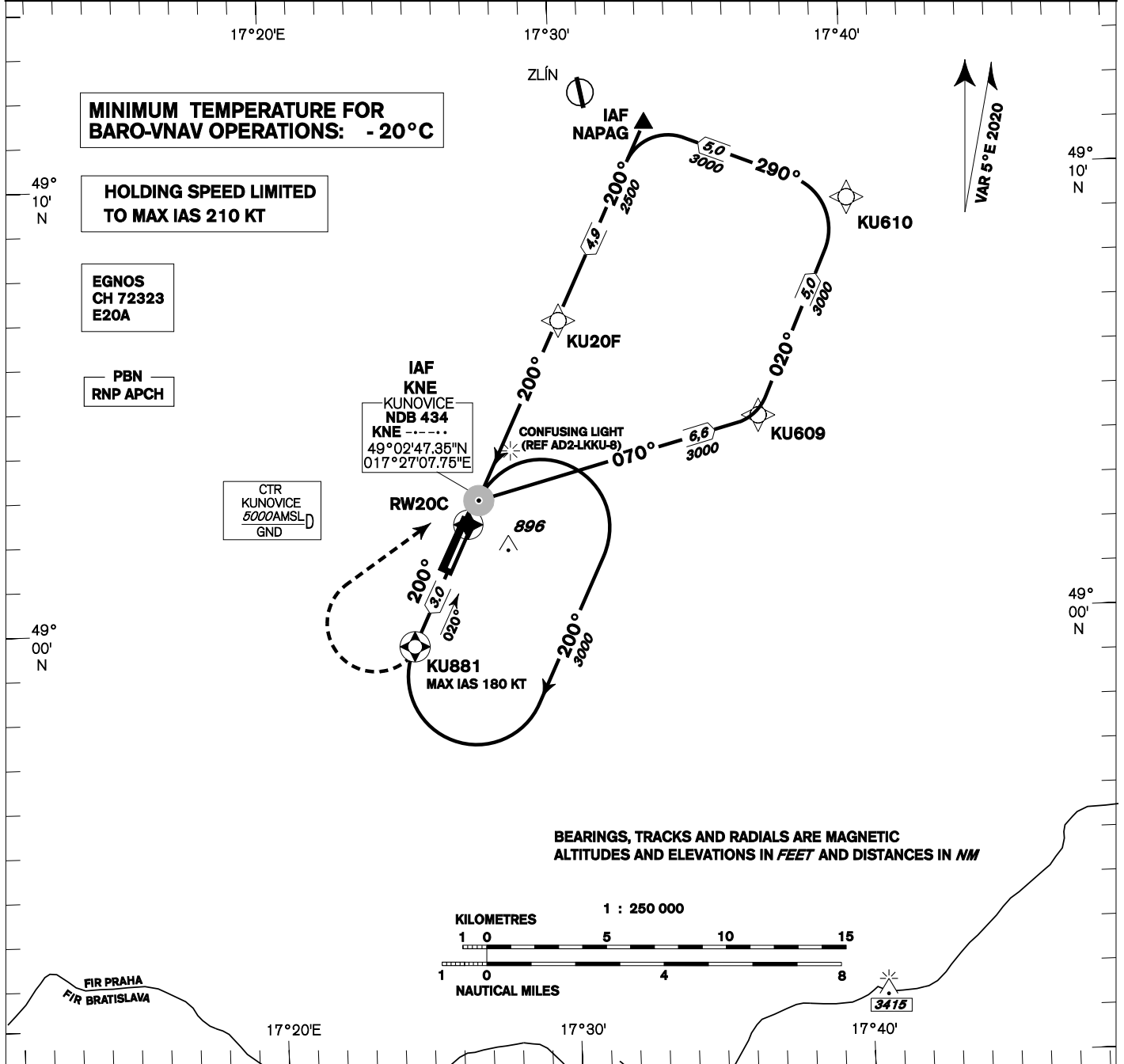
INSTRUMENT APPROACH CHART - ICAO

AERODROME ELEV **581**
THR RWY 20C ELEV **581**
OCH RELATED TO THR RWY 20C

KUNOVICE TOWER **120,105**

MSA NDB KNE
3100 180° 4100 90°
3300 270° 4600 0°

KUNOVICE RNP RWY 20C



OCA/OCH		A			B			C		
		4	2	0	2	4	6	8	10	12
LNNAV	ft	1060/480								
LNNAV/VNAV	ft	918/337								
LPV	ft	831/250	841/260	853/272						
Circling	ft	1190 -	1410 -	1680 -						

DIST THR (MAPt) (RWY20C) NM	ALTITUDES ft					
	5	4	3	2	1	
	2500	2110	1750	1380	1010	
FAF - MAPt	kt	80	100	120	140	160
Rate of descent	min:sec	3:47	3:02	2:31	2:10	1:54
	f/min	500	630	740	870	990

Timing is not authorized for defining the MAPt.

Posloupnost traťových bodů / Way point sequence

Od / From IAF NAPAG		
NAPAG	IAF	fly-by
KU20F	FAF	fly-by
RW20C	MAPt	fly-over
KU881		fly-over
KNE NDB	MAH WPT	

Od / From IAF KNE NDB		
KNE NDB	IAF	
KU609		fly-by
KU610		fly-by
NAPAG		fly-by
KU20F	FAF	fly-by
RW20C	MAPt	fly-over
KU881		fly-over
KNE NDB	MAH WPT	

Seznam traťových bodů / Way point list	
KNE NDB	49 02 47,35 N 017 27 07,75 E
KU20F	49 06 47,04 N 017 30 02,78 E
KU609	49 04 30,76 N 017 36 47,98 E
KU610	49 09 01,23 N 017 40 04,86 E
KU881	48 59 32,61 N 017 24 47,38 E
NAPAG	49 11 10,35 N 017 33 12,32 E

SBAS FAS Data Block

Vstupní data / Input Data

Parametry / Parameters	Hodnoty / Values
Operation Type	0
SBAS Provider	1
Airport Identifier	LKKU
Runway	20
Runway Direction	2
Approach Performance Designator	0
Route Indicator	
Reference Path Data Selector	0
Reference Path Identifier	E20A
LTP/FTP Latitude	490215.1100N
LTP/FTP Longitude	0172644.5700E
LTP/FTP Ellipsoidal Height (metres)	220.5
FPAP Latitude	490116.6200N
Delta FPAP Latitude (seconds)	-58.4900
FPAP Longitude	0172602.3600E
Delta FPAP Longitude (seconds)	-42.2100
Threshold Crossing Height	50.0
TCH Units Selector	0
Glidepath Angle (degrees)	3.50
Course Width (metres)	105.00
Length Offset (metres)	0
HAL (metres)	40.0
VAL (metres)	50.0

Výstupní data / Output Data

Parametry / Parameters	Hodnoty / Values
Data Block	10 15 0B 0B 0C 94 00 00 01 30 32 05 8C 6C 0B 15 B4 A4 7C 07 9D 1C 0C 37 FE 3C B6 FE F4 01 5E 01 64 00 C8 FA C5 61 94 F2
Calculated CRC Value	C56194F2

Required Additional Data (not CRC wrapped)

Parametry / Parameters	Hodnoty / Values
ICAO Code	LK
LTP/FTP Orthometric Height (metres)	177.0
FPAP Orthometric Height (metres)	174.6