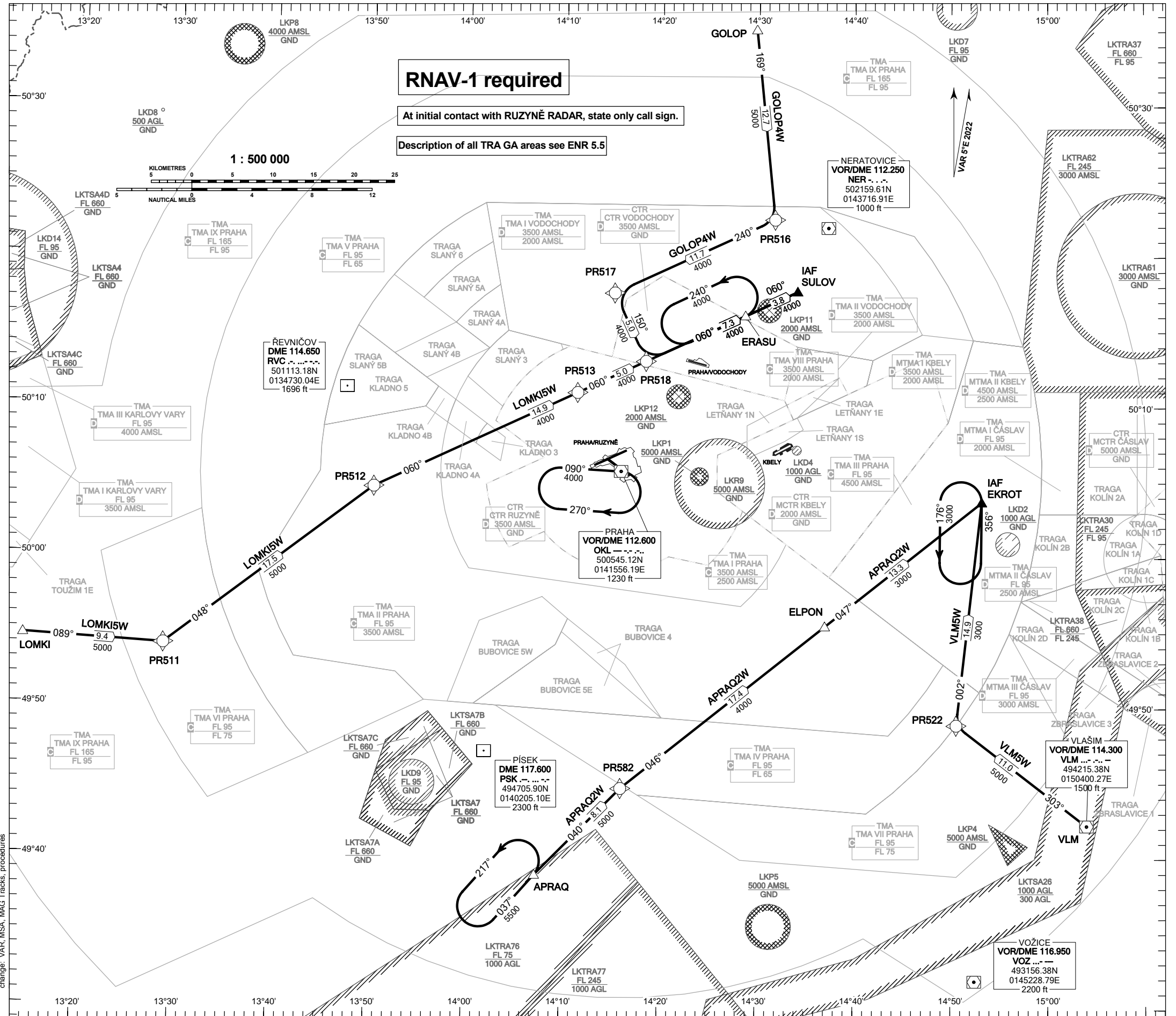


RNAV STANDARD ARRIVAL CHART - INSTRUMENT (STAR) - ICAO

KBELY RNAV STAR RWY 24



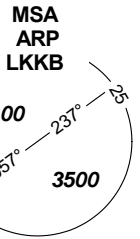
RNAV-1 required

At initial contact with RUZYŇÉ RADAR, state only call sign.

Description of all TRA GA areas see ENR 5.5

1 : 500 000

KILOMETRES
NAUTICAL MILES



| | |
|------------------------|-------------------|
| KBELY APPROACH / RADAR | 124.680 |
| | 291.050 (reserve) |
| KBELY TOWER | 120.880 |
| | 134.730 (reserve) |
| KBELY PRECISION | 126.760 |
| | 123.300 (reserve) |
| | 315.000 (reserve) |

BEARINGS, TRACKS AND RADIALS ARE MAGNETIC
ALTITUDES AND ELEVATIONS ARE IN FEET
DISTANCES ARE IN NM

TRANSITION ALTITUDE
5000