

## INSTRUMENT APPROACH CHART - ICAO

**AERODROME ELEV 919**  
**THR RWY 28 ELEV 915**  
**OCH RELATED TO THR RWY 28**

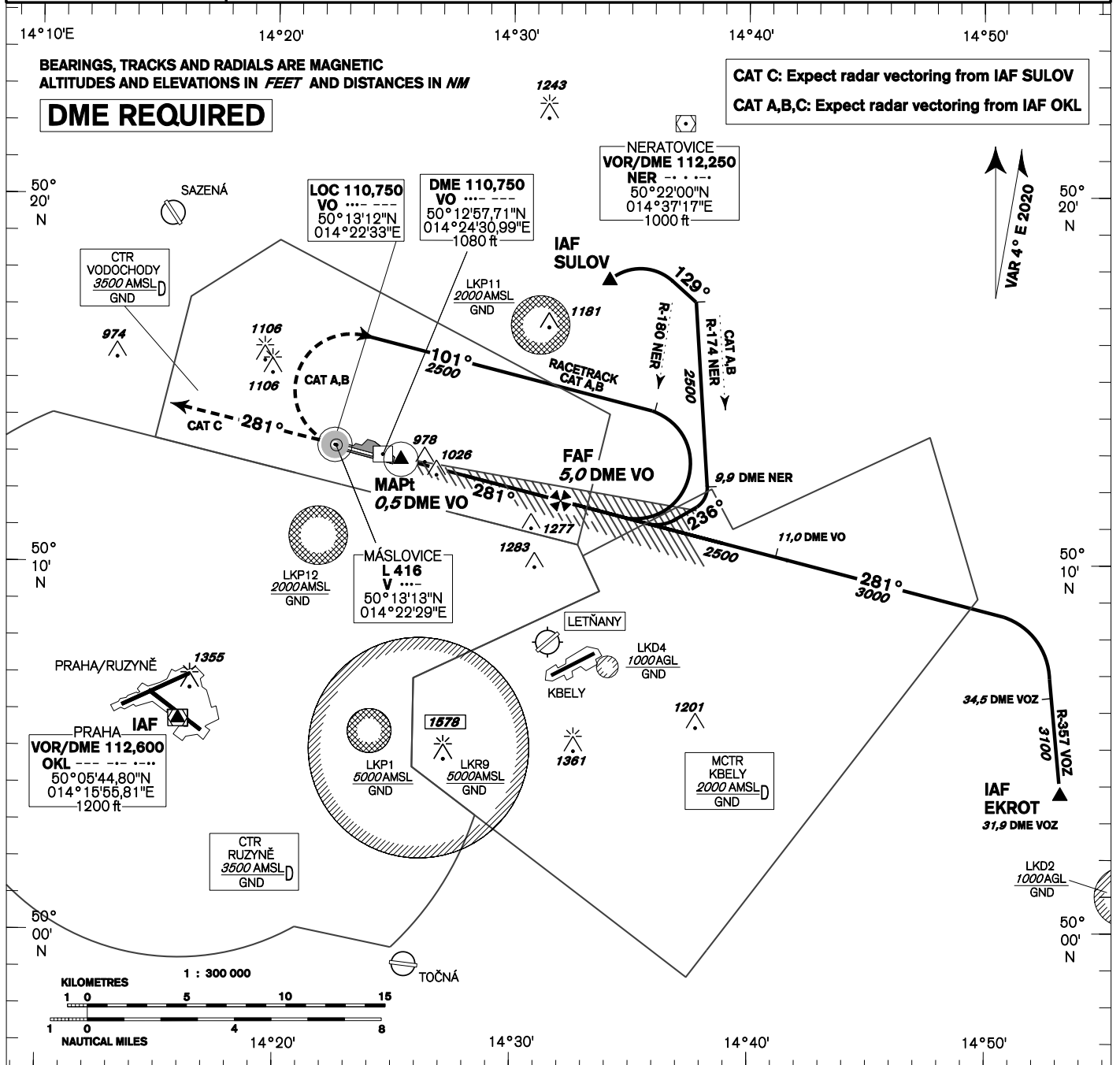
**VODOCHODY RADAR 127,480**  
**TOWER 133,080**  
**121,500**

**MSA L V**  
4000 3200 3100 3600 3100

# PRAHA/VODOCHODY ILS

## RWY 28

### (ACFT CAT A,B,C)



**MISSED APPROACH:**  
 CAT A,B: Climb on track 281°, at L V turn right and continue on racetrack in climbing to 2500ft AMSL.  
 CAT C: Climb on track 281° to 2500ft AMSL, radar vectoring will be provided.  
 CAT A,B,C: In case of RCF climb on track 281° to 2500ft AMSL, at 5.0 DME VO turn right to L V

THR 501249,66N 0142444,89E  
ELEV 915  
NM FM THR28

OCA/OCH		A	B	C
cat I	ft	1064/149	1076/161	1084/169
LOC	ft		1280/360	
Circling (north of AD only)	ft	1330/410	1330/410	1500/580

DME VO NM	5	4	3	2	1
DIST THR NM	4,8	3,8	2,8	1,8	0,8
ALTITUDES ft	2500	2180	1860	1540	1230

kt	80	100	120	140	160	180
FAF - MAPt 4,5 NM min:sec	3:23	2:42	2:15	1:56	1:41	1:30
Rate of descent 5,24% ft/min	420	530	640	740	850	960

Timing is not authorized for defining the MAPt.