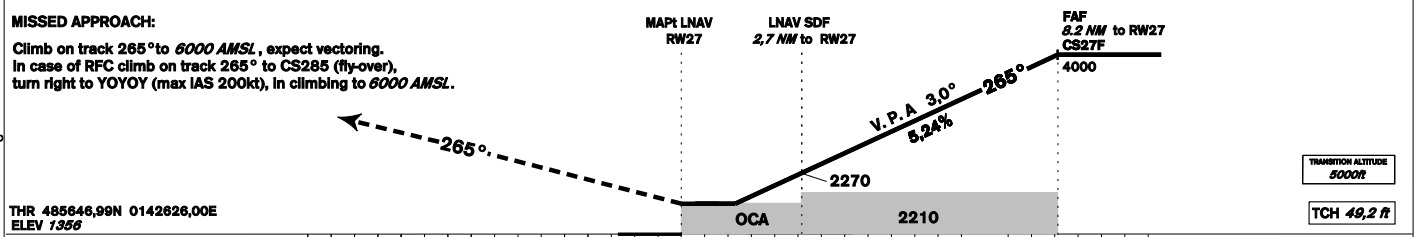
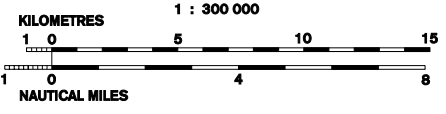
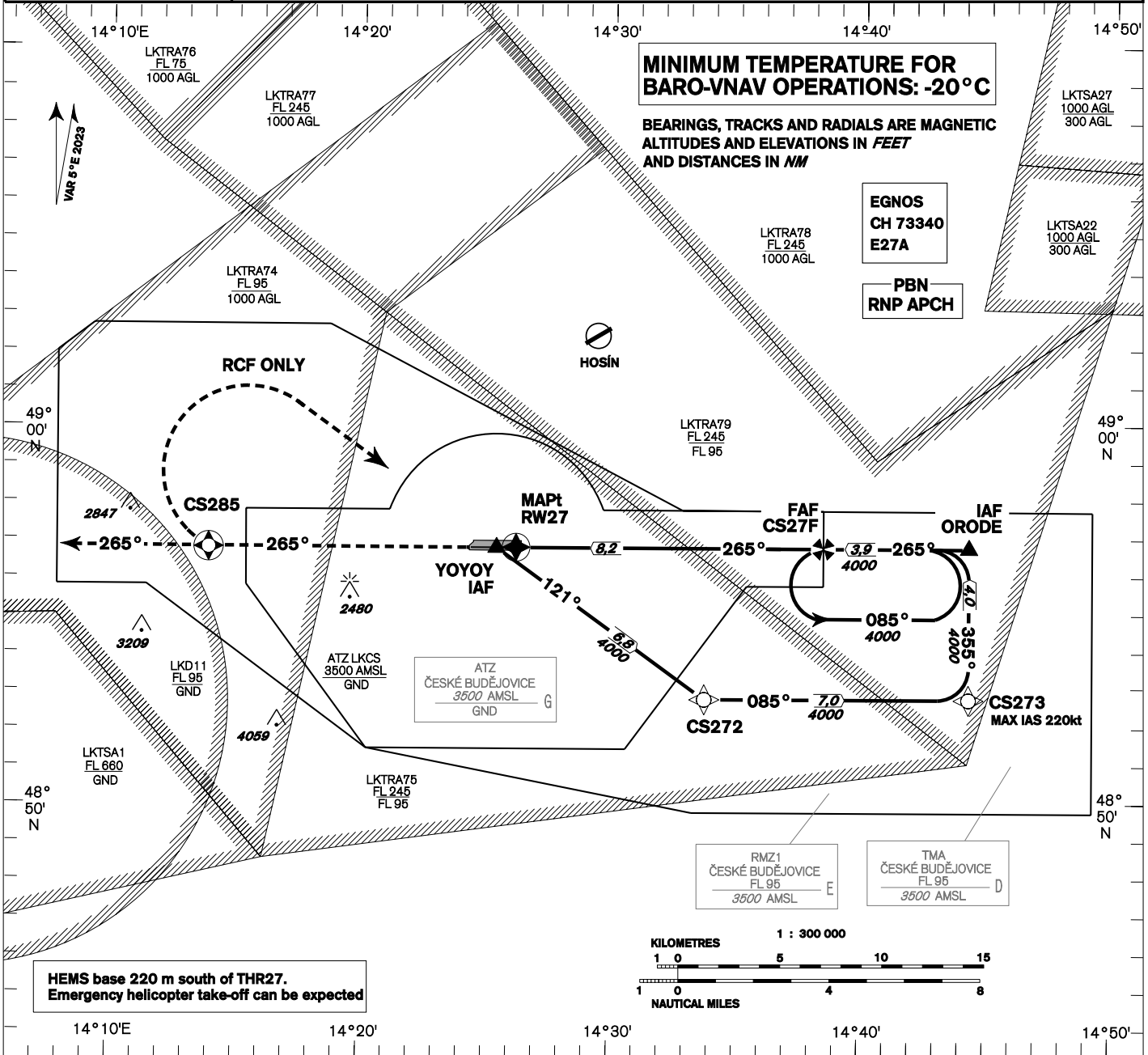
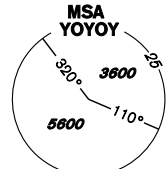


## INSTRUMENT APPROACH CHART - ICAO

**AERODROME ELEV 1417 ft**  
**THR RWY 09 ELEV 1356 ft**  
**OCH RELATED TO THR RWY 27**

**PRAHA RADAR 118,650**  
**BUDĚJOVICE INFORMATION 135,930**  
**PRAHA FIC 126,100**  
**EMERGENCY FREQ. 121,500**

**ČESKÉ  
BUDĚJOVICE  
RNP  
RWY 27**



THR 485646,99N 0142626,00E  
ELEV 1356

missed approach gradient 2,5%				
OCA / OCH	A	B	C	D
LNAV	2070 / 720			
LNAV / VNAV	1882 / 525			
LPV CAT I	1761 / 405	1774 / 417	1782 / 425	1792 / 436
CIRCLING (south of AD only)	2070 / -	2170 / -	2880 / -	2920 / -

missed approach gradient 4,0%				
OCA / OCH	A	B	C	D
LNAV	1800 / 460			
LNAV / VNAV	1660 / 304			
LPV CAT I	1556 / 200	1563 / 207	1571 / 215	1582 / 225
CIRCLING (south of AD only)	2070 / -	2170 / -	2880 / -	2920 / -

DIST THR NM	8	7	6	5	4	3	2	1
ALTITUDES ft	3950	3630	3320	3000	2680	2360	2050	1730

GS	kt	80	100	120	140	160	180
FAF - MAPt 8,2 NM	min:sec	6:07	4:53	4:04	3:30	3:03	2:43
Rate of descent (5,24%)	ft/min	420	530	640	740	850	950

Timing is not authorized for defining the MAPt.

Posloupnost traťových bodů / Way point sequence

Od / From IAF YOYOY		
YOYOY	IAF	fly-by
CS272		fly-by
CS273		fly-by
ORODE	IF	fly-by
CS27F	FAF	fly-by
RW27	MAPt	fly-over

Od / From IAF ORODE		
ORODE	IAF	fly-by
CS27F	FAF	fly-by
RW27	MAPt	fly-over

Seznam traťových bodů / Way point list		
YOYOY	48 56 46,94 N	014 25 39,00 E
ORODE	48 56 46,27 N	014 44 38,25 E
CS272	48 52 47,02 N	014 34 00,64 E
CS273	48 52 46,46 N	014 44 36,92 E
CS27F	48 56 46,33 N	014 38 47,29 E
RW27	48 56 46,9936 N	014 26 25,5959 E

SBAS FAS Data Block

Vstupní data / Input Data

Parametry / Parameters	Hodnoty / Values
Operation Type	0
SBAS Provider	1 (EGNOS)
Airport Identifier	LKCS
Runway	27
Runway Letter	0 (none)
Approach Performance Designator	0
Route Indicator	
Reference Path Data Selector	0
Reference Path Identifier	E27A
LTP/FTP Latitude	485646.9935N
LTP/FTP Longitude	0142625.5960E
LTP/FTP Ellipsoidal Height (metres)	459.7
FPAP Latitude	485646.9480N
Delta FPAP Latitude (seconds)	-0.0455
FPAP Longitude	0142437.4750E
Delta FPAP Longitude (seconds)	-108.1210
Threshold Crossing Height	49.2
TCH Units Selector	0 (feet)
Glidepath Angle (degrees)	3.00
Course Width (metres)	107.00
Length Offset (metres)	0
HAL (metres)	40.0
VAL (metres)	35.0

Výstupní data / Output Data

Parametry / Parameters	Hodnoty / Values
Data Block	10 13 03 0B 0C 1B 00 00 01 37 32 05 23 69 01 15 78 79 32 06 F5 25 A5 FF FF 4E B3 FC EC 01 2C 01 6C 00 C8 AF 60 47 52 7A
Calculated CRC Value	6047527A

Required Additional Data (not CRC wrapped) / Požadovaná dodatečná data (nezabalené do CRC)

Required for procedure coding in ARINC 424 records / Vyžadováno pro kódování prpostupu v ARINC 424:

Parametry / Parameters	Hodnoty / Values
ICAO Code	LK
LTP/FTP Orthometric Height (metres)	413.4