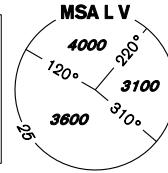


INSTRUMENT APPROACH CHART - ICAO

AERODROME ELEV **919**
THR RWY 10 ELEV **880**
OCH RELATED TO THR RWY 10

VODOCHODY
RADAR **127,480**
TOWER **133,080**
121,500



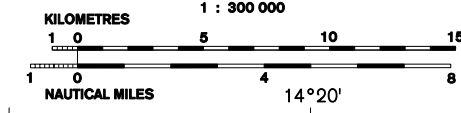
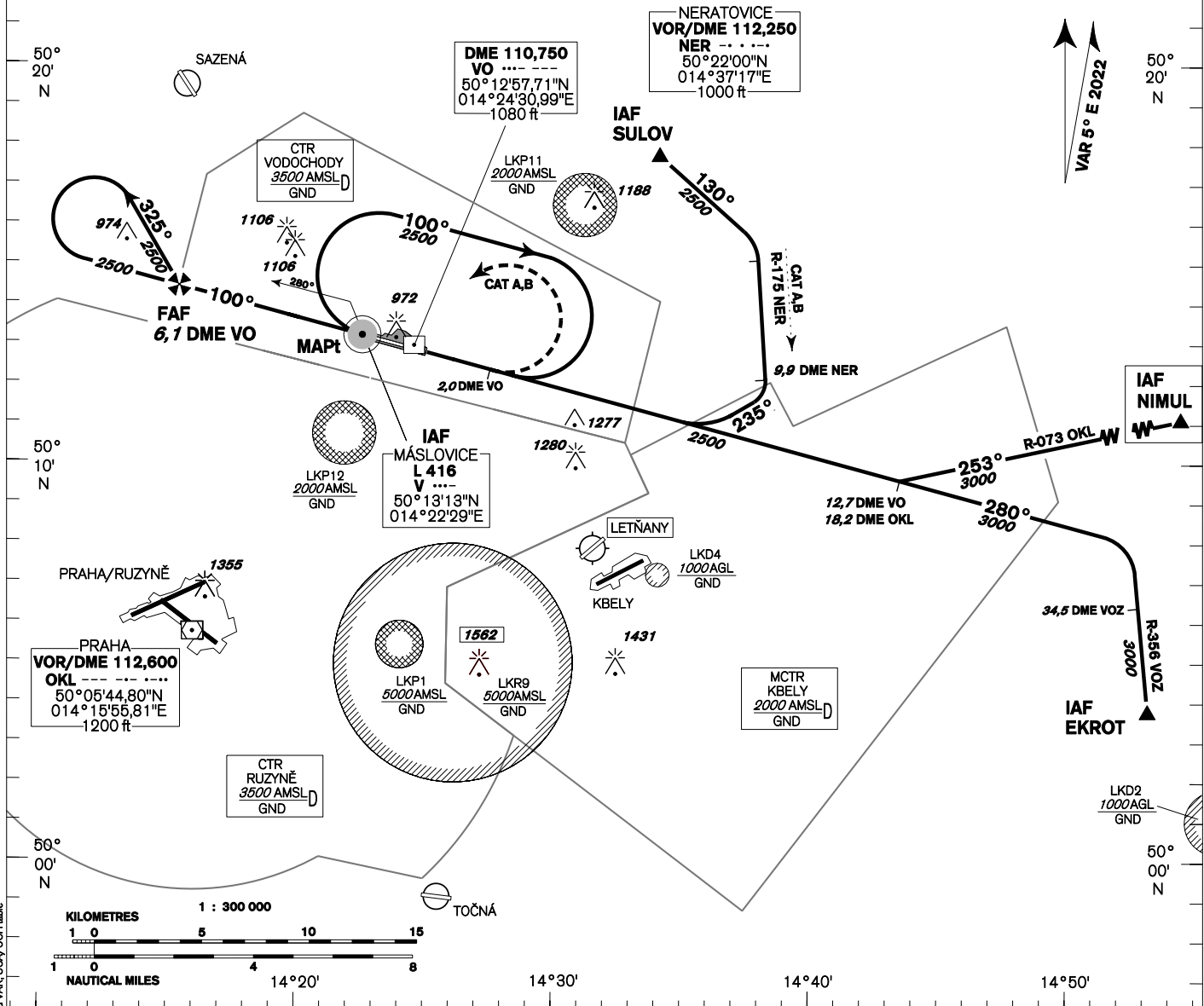
PRAHA/VODOCHODY NDB RWY 10 (ACFT CAT A,B,C)

14°10'E 14°20' 14°30' 14°40' 14°50'

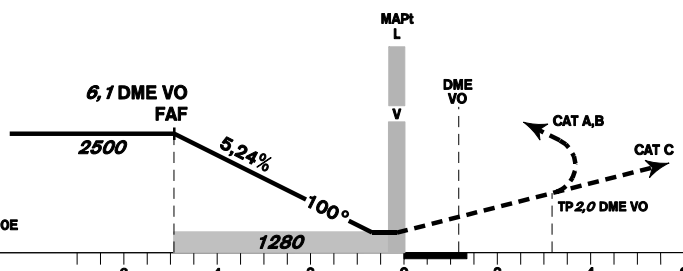
BEARINGS, TRACKS AND RADIALS ARE MAGNETIC
ALTITUDES AND ELEVATIONS IN **FEET** AND DISTANCES IN **NM**

DME REQUIRED

AFTER IAF SULOV
SPEED LIMITED TO MAX IAS 190 KT



TRANSITION ALTITUDE
5000ft



MISSED APPROACH:
CAT A,B: Climb on track 100°, at 2,0 DME VO turn left to L V in climbing to 2500ft AMSL
CAT C: Climb on track 100° to 2500ft AMSL, Expect radar vectoring
CAT A,B,C: In case of RCF climb on track 100° to 5,0 DME VO, turn left to L V. Climb to 2500ft AMSL

THR 501310,43N 0142243,00E
ELEV **880**
NM FM THR10

OCA/OCH	A	B	C
Straight in approach	ft	1280/400	
Circling (north of AD only)	ft	1330/410	1420/500

DME VO	NM	6,1	6	5	4	3	2
DIST THR	NM	4,9	4,8	3,8	2,8	1,8	0,8
ALTITUDES	ft	2500	2470	2150	1830	1510	1200

kt	80	100	120	140	160	180	
FAF - MAPt 4,8 NM	min:sec	3:35	2:52	2:23	2:02	1:47	1:35
Rate of descent 5,24%	ft/min	420	530	640	740	850	960

Timing is not authorized for defining the MAPt.