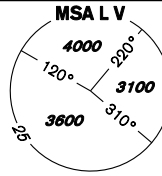


INSTRUMENT APPROACH CHART - ICAO

AERODROME ELEV 919
THR RWY 10 ELEV 880
OCH RELATED TO THR RWY 10

VODOCHODY
RADAR 127,480
TOWER 133,080
121,500



PRAHA/VODOCHODY RNP RWY 10 (ACFT CAT A,B,C)

14°10'E 14°20' 14°30' 14°40' 14°50'

BEARINGS, TRACKS AND RADIALS ARE MAGNETIC
ALTITUDES AND ELEVATIONS IN FEET AND DISTANCES IN NM

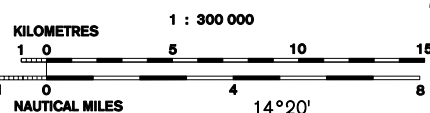
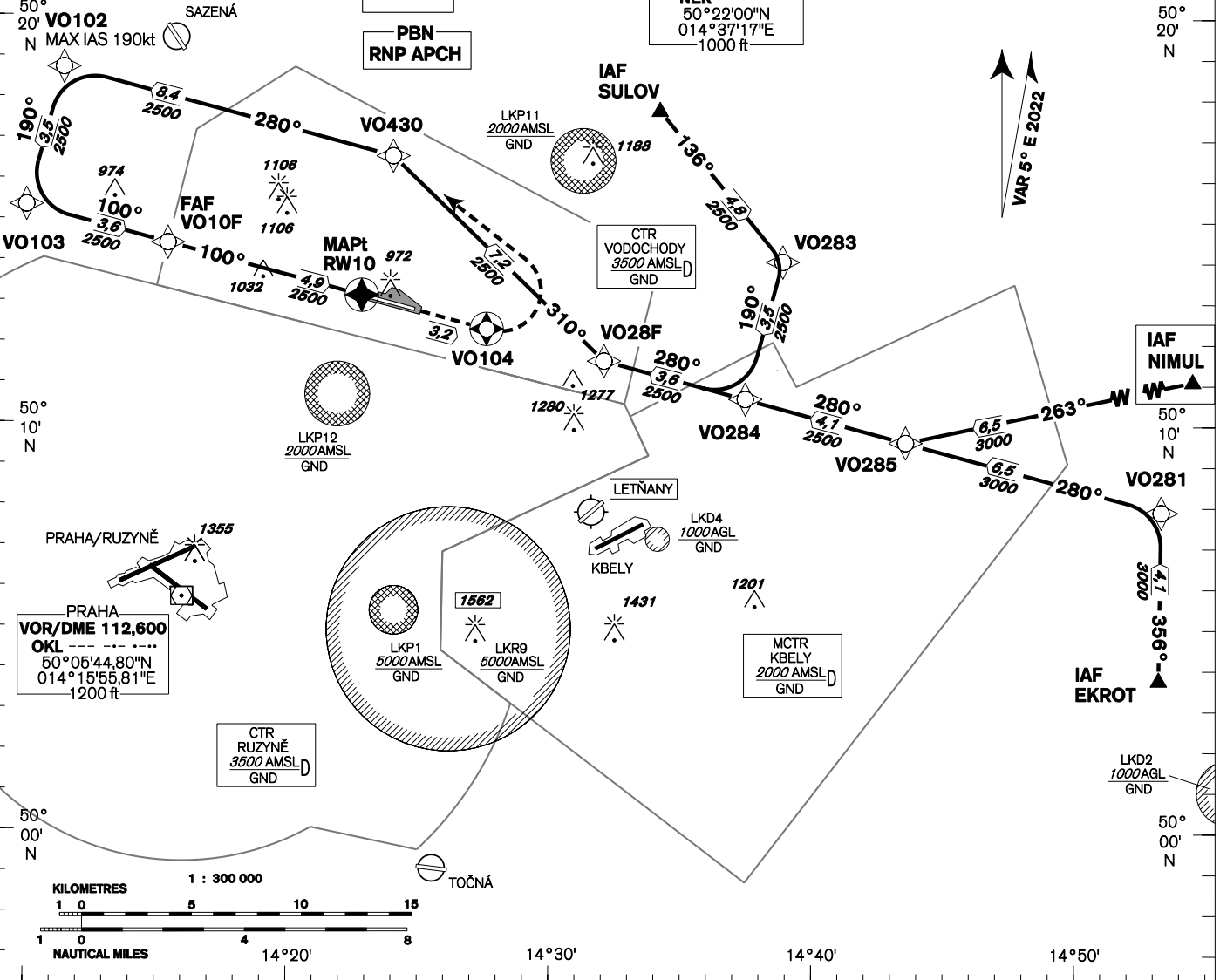
MINIMUM TEMPERATURE FOR
BARO-VNAV OPERATIONS: -20°C

EGNOS
CH 59262
E10A

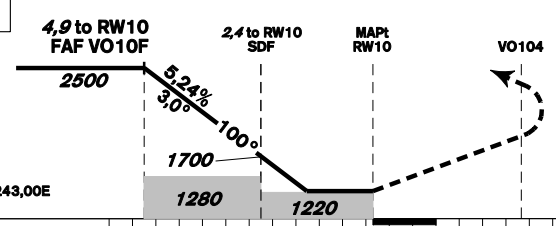
PBN
RNP APCH

NERATOVICE
VOR/DME 112,250
NER ---
50°22'00"N
014°37'17"E
1000 ft

AFTER IAF SULOVA
SPEED LIMITED TO MAX IAS 190 KT
MISSED APPROACH
SPEED LIMITED TO MAX IAS 180 KT



TRANSITION ALTITUDE
5000ft



MISSED APPROACH:
Climb to VO104 (fly-over),
turn left to VO430 (fly-by), turn left to VO102 (fly-by)

change: MISSED APPROACH procedures; new IAF NIMUL; MAG VAR; OCA; OCH table

THR 501310,43N 0142243,00E
ELEV 880
NM FM THR10

TCH 49,2

OCA/OCH		A	B	C
LNAV	ft		1220/340	
LNAV/VNAV	ft		1130/250	
LPV	ft		1130/250	
Circling (north of AD only)	ft	1330/410	1420/500	1510/600

DIST THR NM	4,9	4	3	2	1
ALTITUDES ft	2500	2200	1880	1570	1250

	kt	80	100	120	140	160	180
FAF - MAPt 4,9 NM	min:sec	3:42	2:58	2:28	2:07	1:51	1:39
Rate of descent 5,24%	ft/min	420	530	640	740	850	960

Timing is not authorized for defining the MAPt.

Posloupnost traťových bodů / Way point sequence

Od / From IAF NIMUL		
NIMUL	IAF	fly-by
VO285		fly-by
VO284		fly-by
VO28F		fly-by
VO430		fly-by
VO102		fly-by
VO103	IF	fly-by
VO10F	FAF	fly-by
RW10	MAPt	fly-over
VO104		fly-over
VO430		fly-by

Od / From IAF EKROT		
EKROT	IAF	fly-by
VO281		fly-by
VO285		fly-by
VO284		fly-by
VO28F		fly-by
VO430		fly-by
VO102		fly-by
VO103	IF	fly-by
VO10F	FAF	fly-by
RW10	MAPt	fly-over
VO104		fly-over
VO430		fly-by

Od / From IAF SULOV		
SULOV	IAF	fly-by
VO283		fly-by
VO284		fly-by
VO28F		fly-by
VO430		fly-by
VO102		fly-by
VO103	IF	fly-by
VO10F	FAF	fly-by
RW10	MAPt	fly-over
VO104		fly-over
VO430		fly-by

Seznam traťových bodů / Way point list			
NIMUL	50 11 38,09 N	014 58 30,00 E	
EKROT	50 03 46,00 N	014 53 13,00 E	
SULOV	50 17 44,26 N	014 34 05,85 E	
VO281	50 07 53,45 N	014 53 18,80 E	
VO283	50 14 01,95 N	014 38 49,47 E	
VO284	50 10 39,78 N	014 37 24,59 E	
VO285	50 09 35,97 N	014 43 32,37 E	
VO28F	50 11 35,23 N	014 31 59,99 E	
VO102	50 18 43,83 N	014 11 14,82 E	
VO103	50 15 20,93 N	014 09 51,71 E	
VO10F	50 14 26,06 N	014 15 17,15 E	
RW10	50 13 10,43 N	014 22 43,01 E	
VO104	50 12 21,56 N	014 27 30,00 E	
VO430	50 16 35,70 N	014 23 53,23 E	

SBAS FAS Data Block

Vstupní data / Input Data

Parametry / Parameters	Hodnoty / Values
Operation Type	0
SBAS Provider	1 (EGNOS)
Airport Identifier	LKVO
Runway	10
Runway Direction	0 (None)
Approach Performance Designator	0
Route Indicator	
Reference Path Data Selector	0
Reference Path Identifier	E10A
LTP/FTP Latitude	501310.4300N
LTP/FTP Longitude	0142243.0000E
LTP/FTP Ellipsoidal Height (metres)	313.0
FPAP Latitude	501249.6600N
Delta FPAP Latitude (seconds)	-20.7700
FPAP Longitude	0142444.8800E
Delta FPAP Longitude (seconds)	121.8800
Threshold Crossing Height	49.2
TCH Units Selector	0 (feet)
Glidepath Angle (degrees)	3.00
Course Width (metres)	105.00
Length Offset (metres)	0
HAL (metres)	40.0
VAL (metres)	50.0

Výstupní data / Output Data

Parametry / Parameters	Hodnoty / Values
Data Block	10 0F 16 0B 0C 0A 00 00 01 30 31 05 3C 49 8D 15 70 AE 2B 06 3A 20 BC 5D FF 30 B8 03 EC 01 2C 01 64 00 C8 FA B3 D8 48 62
Calculated CRC Value	B3D84862

Required Additional Data (not CRC wrapped)

These additional data are not required for CRC calculation, but they need to be provided to datahouses for procedure coding in ARINC 424 records.

Parametry / Parameters	Hodnoty / Values
ICAO Code	LK
LTP/FTP Orthometric Height (metres)	268.3