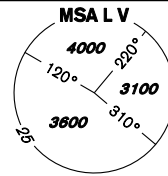


# INSTRUMENT APPROACH CHART - ICAO

AERODROME ELEV 919  
THR RWY 28 ELEV 915  
OCH RELATED TO THR RWY 28

VODOCHODY  
RADAR 127,480  
TOWER 133,080  
121,500



# PRAHA/VODOCHODY RNP RWY 28 (ACFT CAT A,B,C)

BEARINGS, TRACKS AND RADIALS ARE MAGNETIC  
ALTITUDES AND ELEVATIONS IN FEET AND DISTANCES IN NM

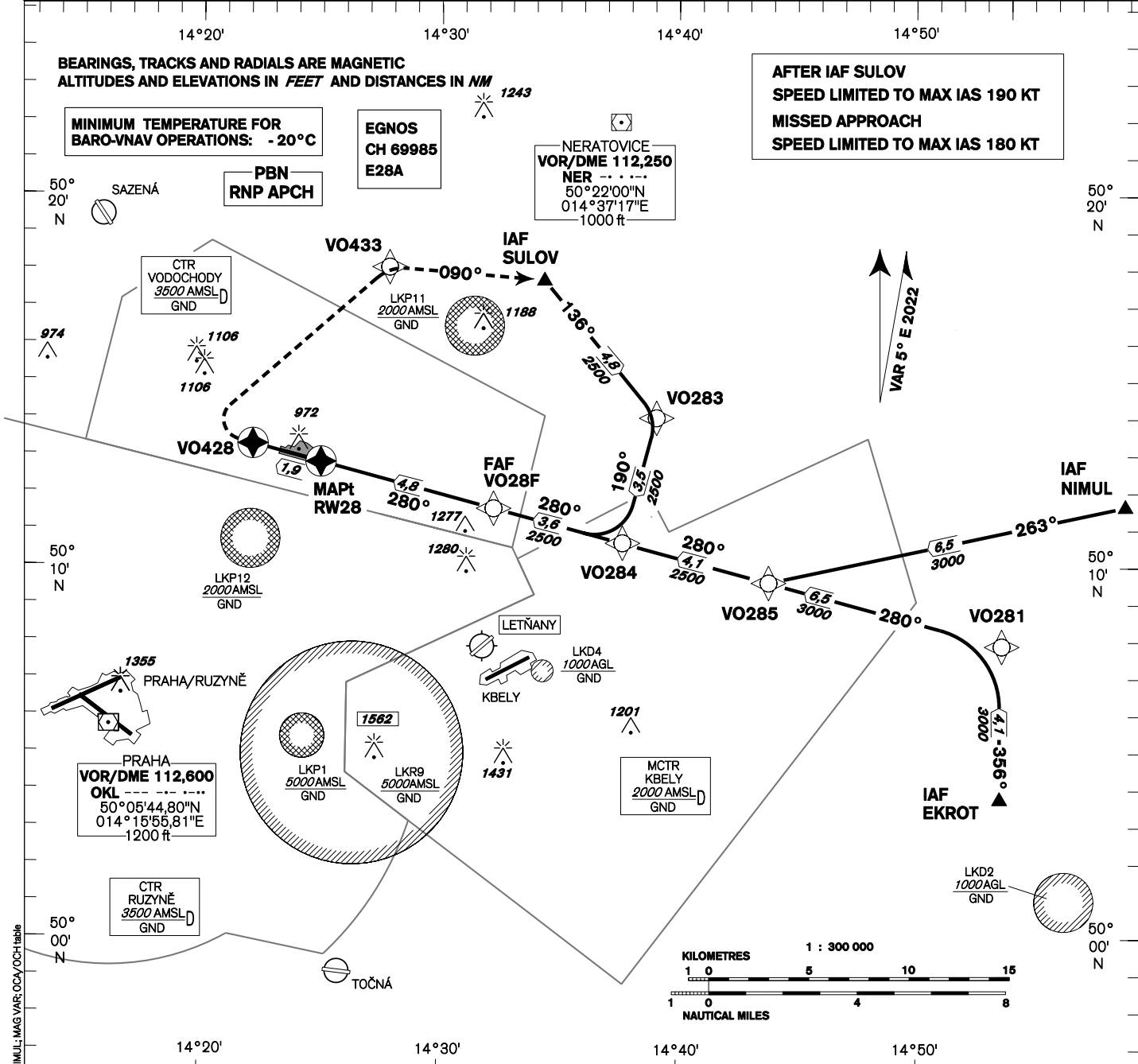
MINIMUM TEMPERATURE FOR  
BARO-VNAV OPERATIONS: -20°C

PBN  
RNP APCH

EGNOS  
CH 69985  
E28A

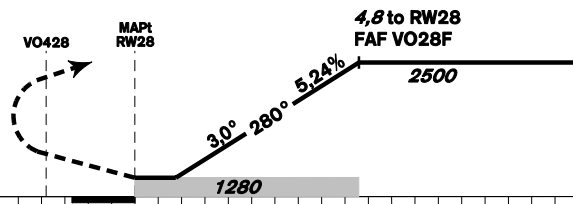
NERATOVICE  
VOR/DME 112,250  
NER ---  
50°22'00"N  
014°37'17"E  
1000 ft

AFTER IAF SULOV  
SPEED LIMITED TO MAX IAS 190 KT  
MISSED APPROACH  
SPEED LIMITED TO MAX IAS 180 KT



MISSED APPROACH:  
Climb to VO428 (fly-over), turn right to VO433 (fly-by),  
continue to SULOV in climbing to 2500ft AMSL

TRANSITION ALTITUDE  
5000ft



TCH 49,2

THR 501249,66N 0142444,88E  
ELEV 915

NM FM THR28

OCA/OCH		A	B	C
LNAV	ft		1280/370	
LNAV/VNAV	ft		1176/261	
LPV	ft		1115/200	
Circling (north of AD only)	ft	1330/410	1420/500	1510/800

DIST THR NM	4,8	4	3	2	1
ALTITUDES ft	2500	2240	1920	1600	1280

	kt	80	100	120	140	160	180
FAF - MAPt 4,8 NM	min:sec	3:36	2:53	2:24	2:03	1:48	1:36
Rate of descent 5,24%	ft/min	420	530	640	740	850	960

Timing is not authorized for defining the MAPt.

Posloupnost traťových bodů / Way point sequence

Od / From IAF NIMUL			Od / From IAF EKROT			Od / From IAF SULOV			Seznam traťových bodů / Way point list		
NIMUL	IAF	fly-by	EKROT	IAF	fly-by	SULOV	IAF	fly-by	NIMUL	50 11 38,09 N	014 58 30,00 E
VO285		fly-by	VO281		fly-by	VO283		fly-by	EKROT	50 03 46,00 N	014 53 13,00 E
VO284	IF	fly-by	VO285		fly-by	VO284	IF	fly-by	SULOV	50 17 44,26 N	014 34 05,85 E
VO28F	FAF	fly-by	VO284	IF	fly-by	VO28F	FAF	fly-by	VO281	50 07 53,45 N	014 53 18,80 E
RW28	MAPt	fly-over	VO28F	FAF	fly-by	RW28	MAPt	fly-over	VO283	50 14 01,95 N	014 38 49,47 E
VO428		fly-over	RW28	MAPt	fly-over	VO428		fly-over	VO284	50 10 39,78 N	014 37 24,59 E
VO433		fly-by	VO428		fly-over	VO433		fly-by	VO28F	50 11 35,23 N	014 31 59,99 E
SULOV		fly-by	VO433		fly-by	SULOV		fly-by	RW28	50 12 49,66 N	014 24 44,89 E
			SULOV		fly-by				VO428	50 13 18,88 N	014 21 53,34 E
									VO433	50 18 04,42 N	014 27 35,33 E

SBAS FAS Data Block

Vstupní data / Input Data

Parametry / Parameters	Hodnoty / Values
Operation Type	0
SBAS Provider	1 (EGNOS)
Airport Identifier	LKVO
Runway	28
Runway Direction	0 (None)
Approach Performance Designator	0
Route Indicator	
Reference Path Data Selector	0
Reference Path Identifier	E28A
LTP/FTP Latitude	501249.6600N
LTP/FTP Longitude	0142444.8800E
LTP/FTP Ellipsoidal Height (metres)	323.7
FPAP Latitude	501310.4300N
Delta FPAP Latitude (seconds)	20.7700
FPAP Longitude	0142243.0000E
Delta FPAP Longitude (seconds)	-121.8800
Threshold Crossing Height	49.2
TCH Units Selector	0 (feet)
Glidepath Angle (degrees)	3.00
Course Width (metres)	105.00
Length Offset (metres)	0
HAL (metres)	40.0
VAL (metres)	35.0

Výstupní data / Output Data

Parametry / Parameters	Hodnoty / Values
Data Block	10 0F 16 0B 0C 1C 00 00 01 38 32 05 F8 A6 8C 15 A0 66 2F 06 A5 20 44 A2 00 D0 47 FC EC 01 2C 01 64 00 C8 AF 66 5A DF 4C
Calculated CRC Value	665ADF4C

Required Additional Data (not CRC wrapped)

These additional data are not required for CRC calculation, but they need to be provided to datahouses for procedure coding in ARINC 424 records.

Parametry / Parameters	Hodnoty / Values
ICAO Code	LK
LTP/FTP Orthometric Height (metres)	279.0