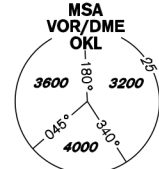
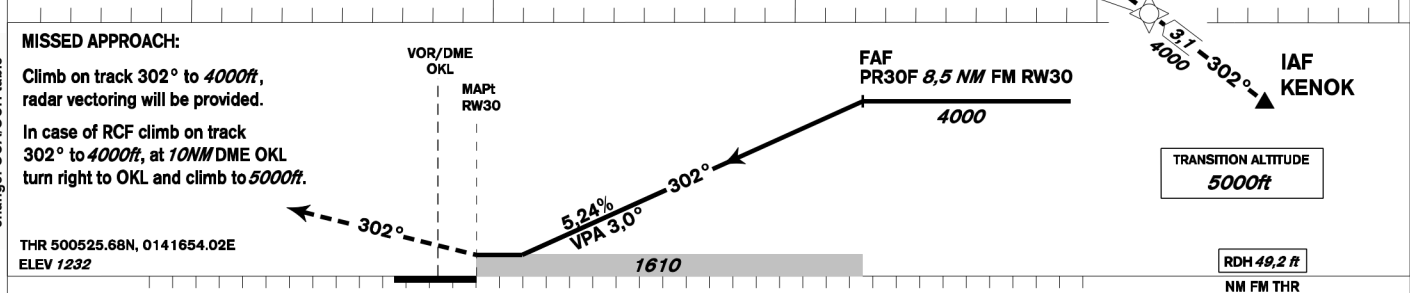
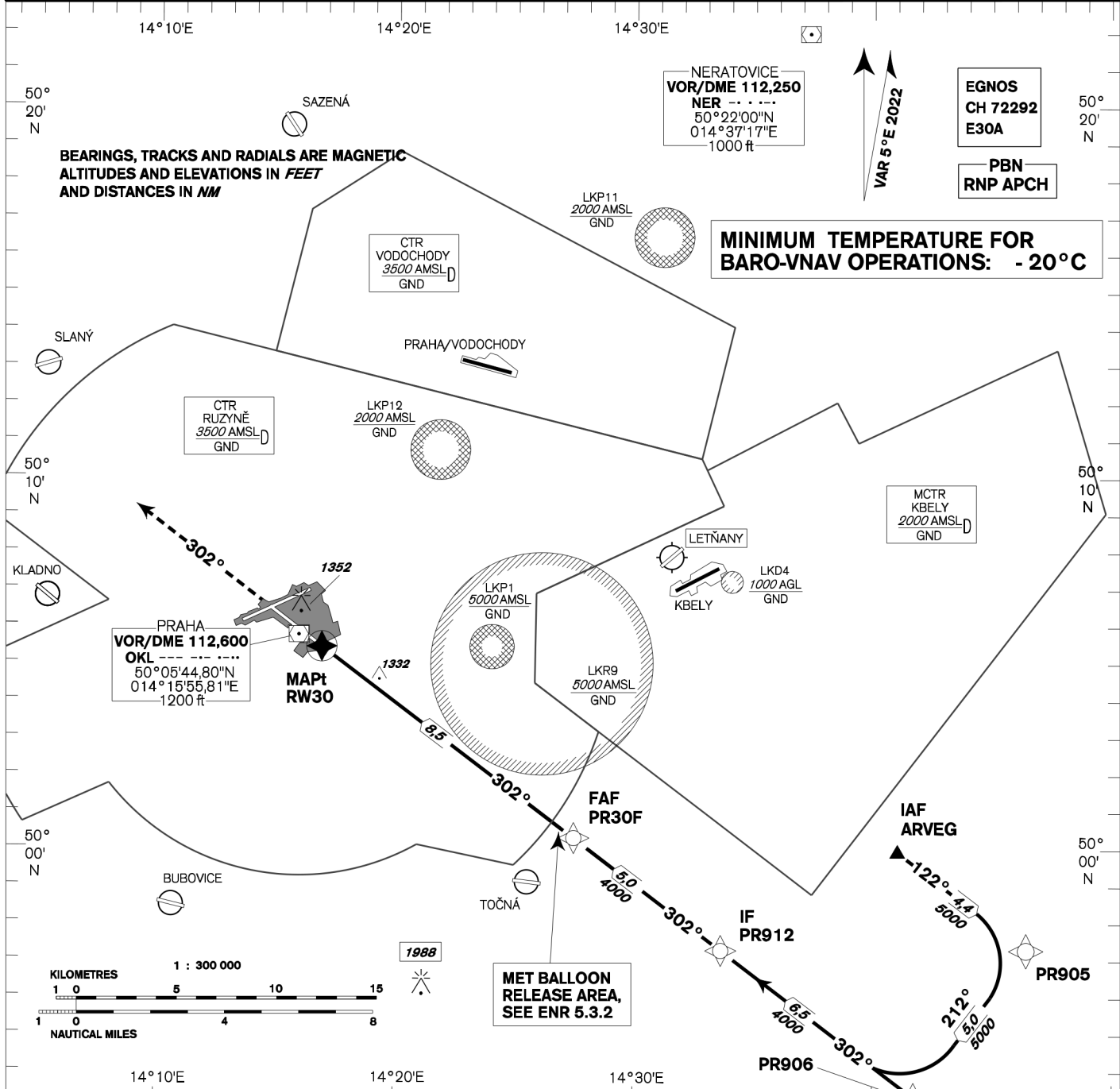


| | | | | |
|---|---|--|---|--|
| INSTRUMENT APPROACH CHART - ICAO | AERODROME ELEV 1234 THR RWY 30 ELEV 1232 OCH RELATED TO THR RWY 30 | PRAHA RADAR 127,580 RUZYNĚ RADAR 119,010 SUPPLEMENTARY FREQ. 136,080 121,500 134,560 RUZYNĚ TOWER 118,110 SUPPLEMENTARY FREQ. 121,500 | MSA VOR/DME OKL  | PRAHA/Ruzyně RNP RWY 30 |
|---|---|--|---|--|



| | | | | | | | |
|-------------|----|---------------------------------|---|---|--|--|--|
| | | | | | | | |
| OCA/OCH | A | B | C | D | | | |
| LNAV | ft | 1620 / 380 | | | | | |
| LNAV / VNAV | ft | 1529 / 297 | | | | | |
| LPV | ft | 1432 / 200 | | | | | |
| Circling | | see the circling approach chart | | | | | |

| | | | | | | | | | |
|--------------------|---------|------|------|------|------|------|------|------|------|
| DIST THR (MAPt) NM | 9 | 8 | 7 | 6 | 5 | 4 | 3 | 2 | 1 |
| ALTITUDES ft | 4150 | 3830 | 3510 | 3190 | 2870 | 2550 | 2240 | 1920 | 1600 |
| | kt | 80 | 100 | 120 | 140 | 160 | 180 | | |
| FAF - MAPt 8,5 NM | min:sec | 6:25 | 5:07 | 4:16 | 3:40 | 3:12 | 2:51 | | |
| Rate of descent | ft/min | 420 | 530 | 640 | 740 | 850 | 960 | | |

Timing is not authorized for defining the MAPt.

Posloupnost traťových bodů / Way point sequence

| Od / From IAF ARVEG | | |
|---------------------|------|----------|
| ARVEG | IAF | fly-by |
| PR905 | | fly-by |
| PR906 | | fly-by |
| PR912 | IF | fly-by |
| PR30F | FAF | fly-by |
| RW30 | MAPt | fly-over |

| Od / From IAF KENOK | | |
|---------------------|------|----------|
| KENOK | IAF | fly-by |
| PR906 | | fly-by |
| PR912 | IF | fly-by |
| PR30F | FAF | fly-by |
| RW30 | MAPt | fly-over |

| Seznam traťových bodů / Way point list | |
|--|------------------------------|
| PR905 | 49 57 17,86 N 014 46 25,19 E |
| KENOK | 49 51 26,01 N 014 45 34,00 E |
| PR906 | 49 53 19,27 N 014 41 43,75 E |
| PR912 | 49 57 14,58 N 014 33 44,54 E |
| PR30F | 50 00 18,07 N 014 27 29,23 E |
| RW30 | 50 05 25,68 N 014 16 54,02 E |
| ARVEG | 49 59 56,37 N 014 41 02,25 E |

SBAS FAS Data Block

Vstupní data / Input Data

| Parametry / Parameters | Hodnoty / Values |
|-------------------------------------|------------------|
| Operation Type | 0 |
| SBAS Provider | 1 (EGNOS) |
| Airport Identifier | LKPR |
| Runway | 30 |
| Runway Letter | 0 (None) |
| Approach Performance Designator | 0 |
| Route Indicator | |
| Reference Path Data Selector | 0 |
| Reference Path Identifier | E30A |
| LTP/FTP Latitude | 500525.6800N |
| LTP/FTP Longitude | 0141654.0200E |
| LTP/FTP Ellipsoidal Height (metres) | 421.2 |
| FPAP Latitude | 500628.8400N |
| Delta FPAP Latitude (seconds) | 63.1600 |
| FPAP Longitude | 0141443.3200E |
| Delta FPAP Longitude (seconds) | -130.7000 |
| Threshold Crossing Height | 49.2 |
| TCH Units Selector | 0 (feet) |
| Glidepath Angle (degrees) | 3.00 |
| Course Width (metres) | 105.00 |
| Length Offset (metres) | 0 |
| HAL (metres) | 40.0 |
| VAL (metres) | 35.0 |

Výstupní data / Output Data

| Parametry / Parameters | Hodnoty / Values |
|------------------------|--|
| Data Block | 10 12 10 0B 0C 1E 00 00 01 30 33 05 60 1A 7F 15 08 08 21 06 74 24 70 ED 01 E8 02 FC EC 01 2C 01 64 00 C8 AF 5A B9 20 0F |
| Calculated CRC Value | 5AB9200F |

Required Additional Data (not CRC wrapped)

| Parametry / Parameters | Hodnoty / Values |
|-------------------------------------|------------------|
| ICAO Code | LK |
| LTP/FTP Orthometric Height (metres) | 375.5 |