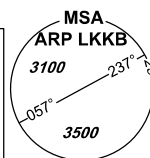


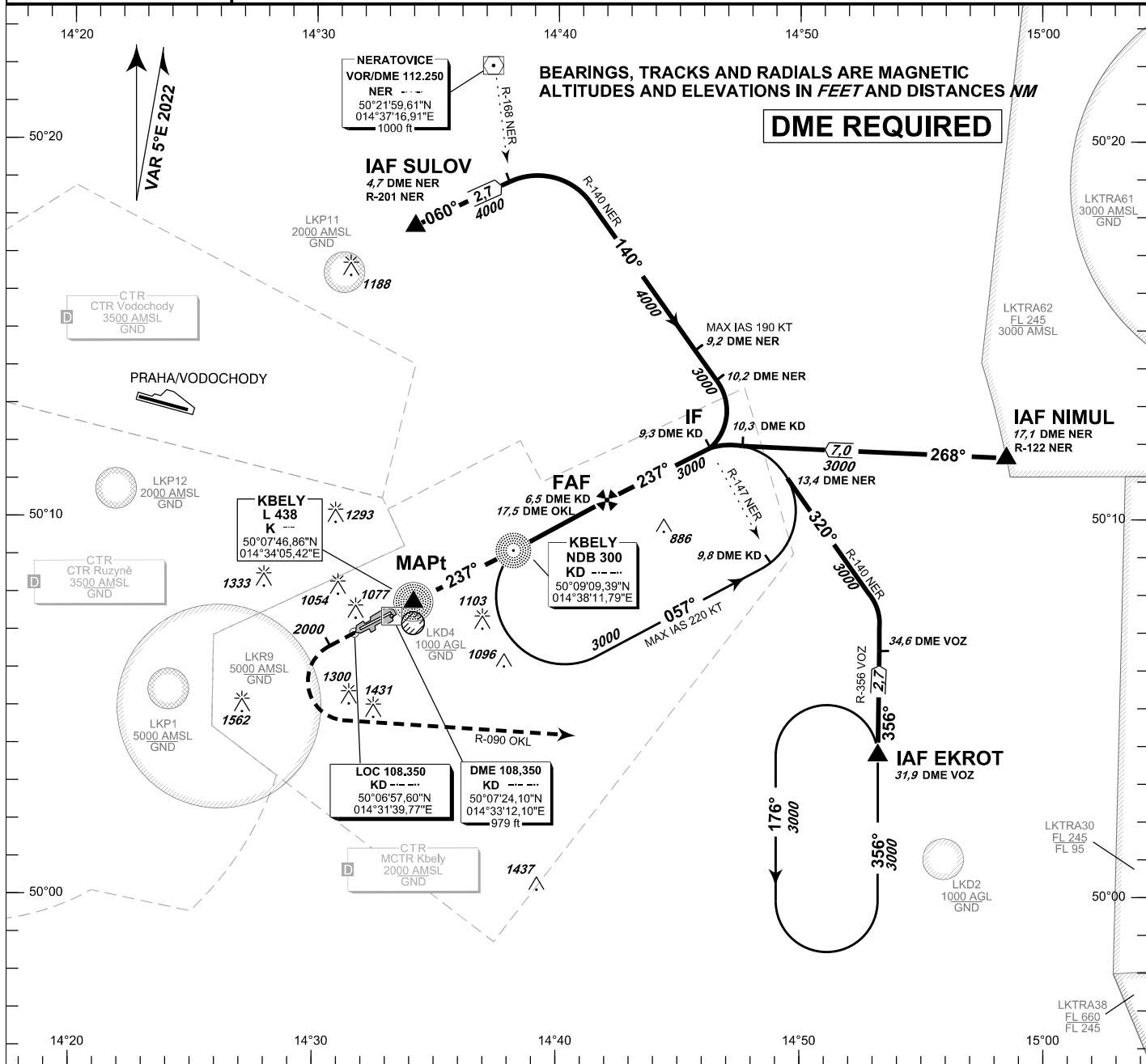
INSTRUMENT APPROACH CHART - ICAO

AERODROME ELEV **939**
 THR RWY 06 ELEV **939**
 THR RWY 24 ELEV **916**
 ARP **919**
 OCH RELATED TO THR RWY 24

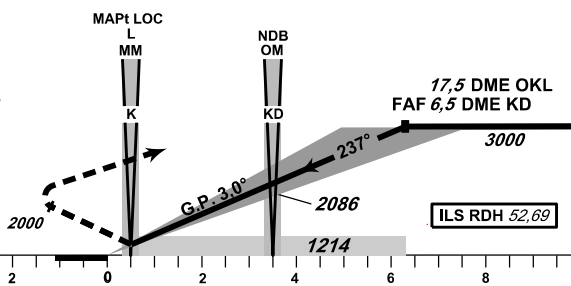
KBELY RADAR 124,680 291,050 reserve
 KBELY PRECISION 126,760 123,300 reserve
 315,000 reserve
 KBELY TOWER 120,880 134,730 reserve



KBELY ILS RWY 24



MISSED APPROACH:
 Climb to **2000ft** MAX **2,7NM**
 KD DME/MNM **8,7NM** OKL DME,
 turn left intercept radial R 090 OKL
 then climb to **3000ft** continue to EKROT



TRANSITION ALTITUDE
5000ft

MISSED APPROACH:
 to IAS \leq 185 kt min. bank angle 15°
 to IAS \leq 230 kt min. bank angle 20°
 IAS MAX = 230 KT

THR 500731.93N, 0143321.70E
 ELEV 916

OCA/OCH		A	B	C	D
Straight - in Approach	Cat I	ft 1115 / 197	1119 / 200	1128 / 210	1138 / 220
	LOC	ft	1214 / 296		
Circling (South only)		ft 1345 / -	1656 / -	1971 / -	-

DME KD	NM	6,5	5,0	4,0	3,0	2,0	1,0	0,5
ALTITUDES	ft	3000	2500	2241	1912	1607	1286	1115
	kt	60	90	120	150	180		
FAF - MAPt	5,8 NM	min:sec 5:49	3:53	2:55	2:20	1:57		
Rate of descent	ft / min	315	470	640	790	960		

Timing is not authorized for defining the MAPt

change: correction - ILS RDH value, the note "DME REQUIRED" added