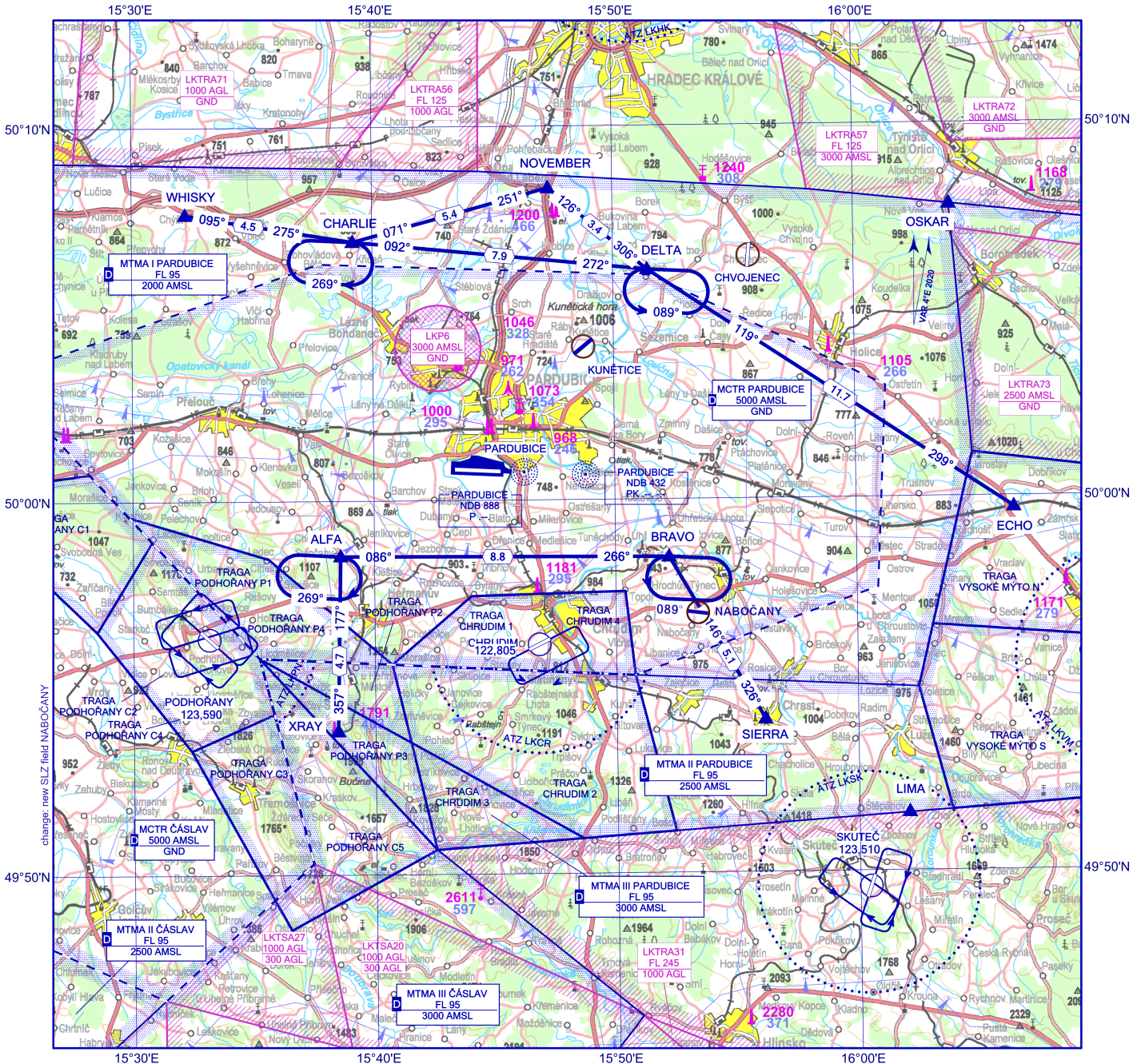


AD ELEV 741 ft/226 m

VFR Arrivals and Departures Chart  
PARDUBICE

BEARINGS ARE MAGNETIC  
ALT AND ELEV IN FEET  
DISTANCES ARE IN NM

PARDUBICE RADAR	128.365 267.300
PARDUBICE TOWER	120.155 120.205 (reserve)
EMERGENCY FREQ	121.500
ČÁSLAV TOWER	134.205



ALFA	49 58 31 N 015 38 35 E	Svinčany - municipal office	NOVEMBER	50 08 21 N 015 47 19 E	Opatovice - traffic roundabout	LIMA	49 51 33 N 016 02 05 E	Lhota u Skutče - -0,3 NM WEST
BRAVO	49 58 27 N 015 52 13 E	Úhřetice - industry hall	SIERRA	49 54 05 N 015 56 09 E	Chrast - church	OSKAR	50 07 50 N 016 04 00 E	Tůmovka - pond
CHARLIE	50 06 56 N 015 39 10 E	Kříčeň - collective farm	WHISKY	50 07 40 N 015 32 12 E	Chýšť - collective farm	Description of all TRA GA areas see ENR 5.5		
DELTA	50 06 09 N 015 51 25 E	Bohumileč - 1NM EAST of golf course	XRAY	49 53 50 N 015 38 26 E	Prachovice - cement plant	1 : 300 000		
ECHO	49 59 42 N 016 06 33 E	Zámorsk - train station	1502 Elevation of Top (AMSL) of obstacle 499 Height of Obstacle (AGL)		KILOMETRES 1 0 5 10 15 NAUTICAL MILES 1 0 4 8			

<b>Arrivals 09</b>	<b>Waypoint sequence</b>
WHISKY 1B NOVEMBER 1B ECHO 1B SIERRA 1B XRAY 1B	WHISKY - CHARLIE NOVEMBER - CHARLIE ECHO - DELTA - CHARLIE SIERRA - BRAVO - ALFA XRAY - ALFA
<b>Arrivals 27</b>	<b>Waypoint sequence</b>
WHISKY 1A NOVEMBER 1A ECHO 1A SIERRA 1A XRAY 1A	WHISKY - CHARLIE - DELTA NOVEMBER - DELTA ECHO - DELTA SIERRA - BRAVO XRAY - ALFA - BRAVO
<b>Departures 09</b>	<b>Waypoint sequence</b>
WHISKY 1E NOVEMBER 1E ECHO 1E SIERRA 1E XRAY 1E	DELTA - CHARLIE - WHISKY DELTA - NOVEMBER DELTA - ECHO BRAVO - SIERRA BRAVO - ALFA - XRAY
<b>Departures 27</b>	<b>Waypoint sequence</b>
WHISKY 1W NOVEMBER 1W ECHO 1W SIERRA 1W XRAY 1W	CHARLIE - WHISKY CHARLIE - NOVEMBER CHARLIE - DELTA - ECHO ALFA - BRAVO - SIERRA ALFA - XRAY