

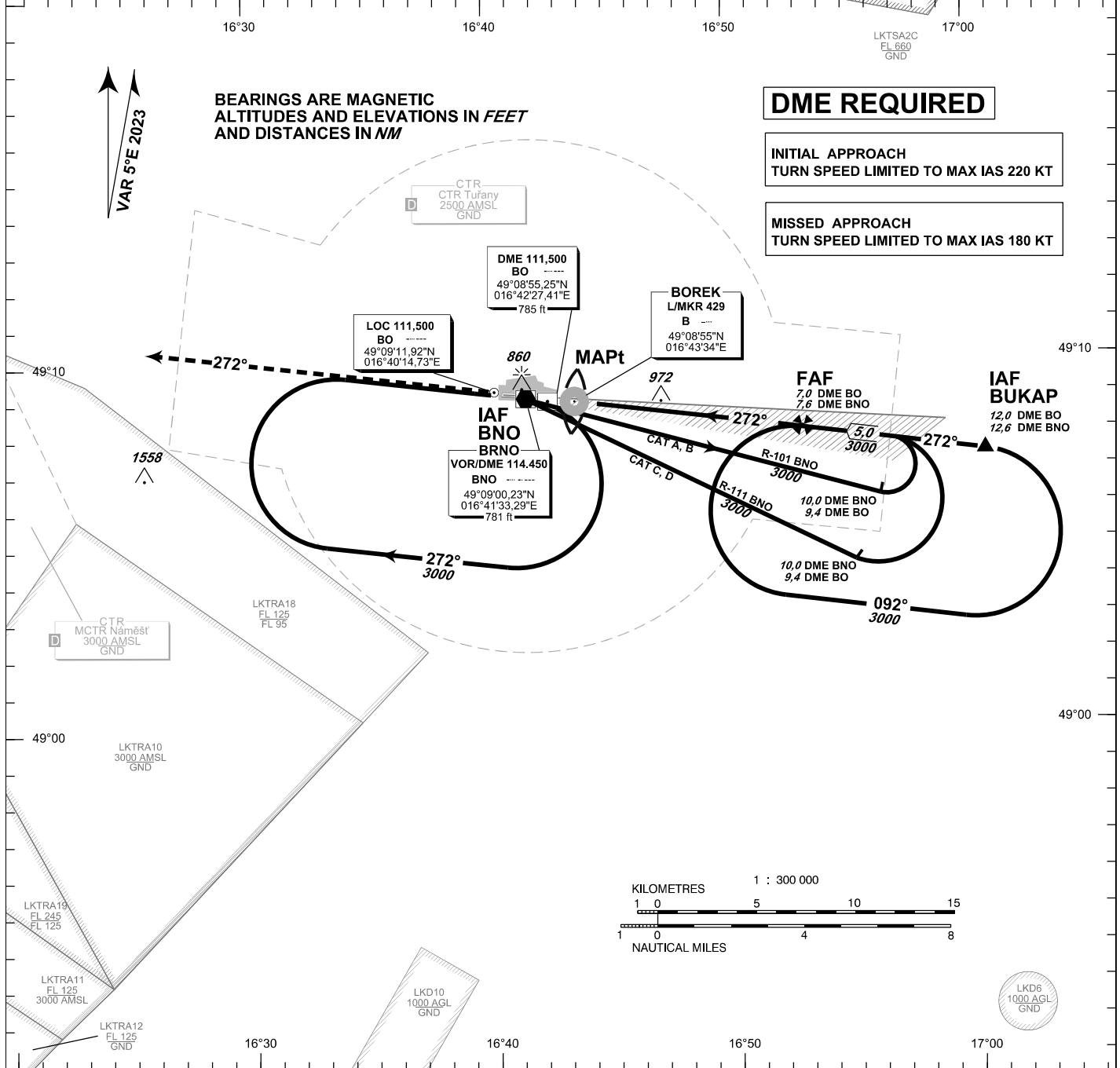
# INSTRUMENT APPROACH CHART - ICAO

AERODROME ELEV 778  
 THR RWY 27 ELEV 771  
 OCH RELATED TO THR RWY 27

TUŘANY/TOWER 119,605  
 125,430  
 121,500  
 PRAHA RADAR 127,350  
 121,500



**BRNO/Tuřany ILS**  
**RWY 27**

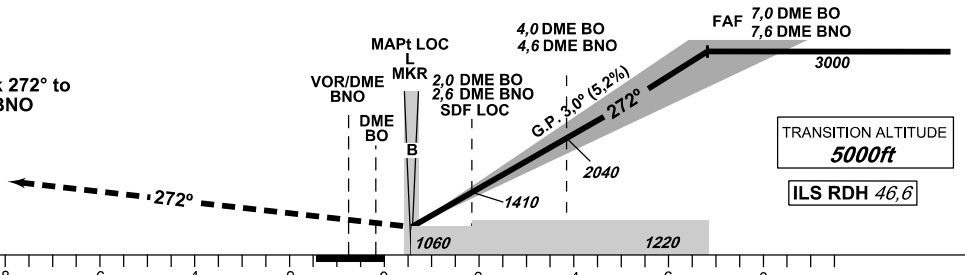


**MISSED APPROACH:**

Climb on track 272° to 4000 ft AMSL, expect vectoring. In case of RCF climb on track 272° to 8,0 NM DME BNO and turn right to VOR/DME BNO in climbing to 4000 ft AMSL.

THR 490859.12N 0164242.83E  
 ELEV 771

NM FM THR27



| OCA/OCH                     |       | A           | B       | C       | D       |
|-----------------------------|-------|-------------|---------|---------|---------|
| Straight - in               | Cat I | ft 927/156  | 939/169 | 947/176 | 958/188 |
|                             | LOC   | ft 1060/290 |         |         |         |
| Circling (South of AD Only) |       | ft 1210/-   | 1440/-  | 1560/-  | 1740/-  |

| DME BO NM    | 7    | 6    | 5    | 4    | 3    | 2    | 1    |
|--------------|------|------|------|------|------|------|------|
| DME BNO NM   | 7,6  | 6,6  | 5,6  | 4,6  | 3,6  | 2,6  | 1,6  |
| DIST THR NM  | 6,8  | 5,8  | 4,8  | 3,8  | 2,8  | 1,8  | 0,8  |
| ALTITUDES ft | 3000 | 2680 | 2360 | 2040 | 1720 | 1410 | 1090 |

| kt                | 80           | 100  | 120  | 140  | 160  | 180  |
|-------------------|--------------|------|------|------|------|------|
| FAF - MAPt 6,3 NM | min:sec 4:42 | 3:46 | 3:08 | 2:41 | 2:21 | 2:06 |
| Rate of descent   | ft/min 420   | 530  | 640  | 740  | 850  | 960  |

Timing is not authorized for defining the MAPt.