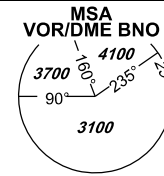


INSTRUMENT APPROACH CHART - ICAO

AERODROME ELEV **778**
 THR RWY 09 ELEV **764**
 OCH RELATED TO THR RWY 09

TUŘANY/TOWER **119,605**
125,430
121,500
 PRAHA RADAR **127,350**
121,500



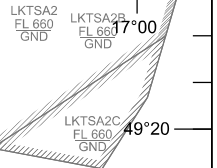
BRNO/Tuřany NDB
RWY 09

16°20

16°30

16°40

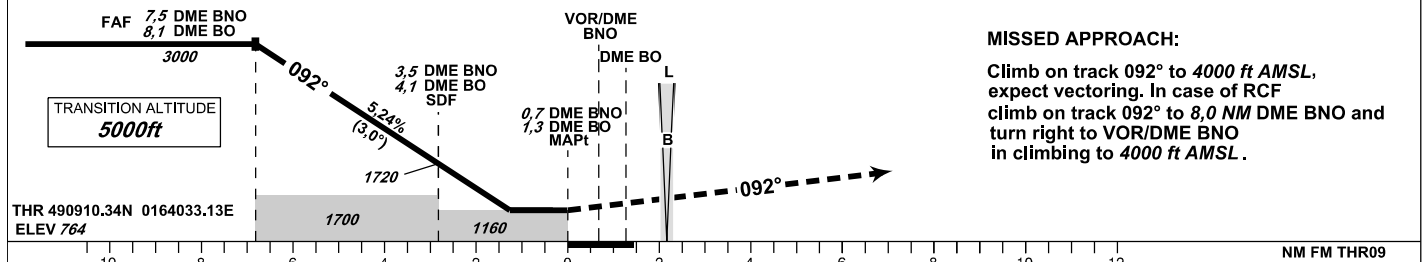
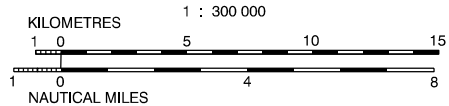
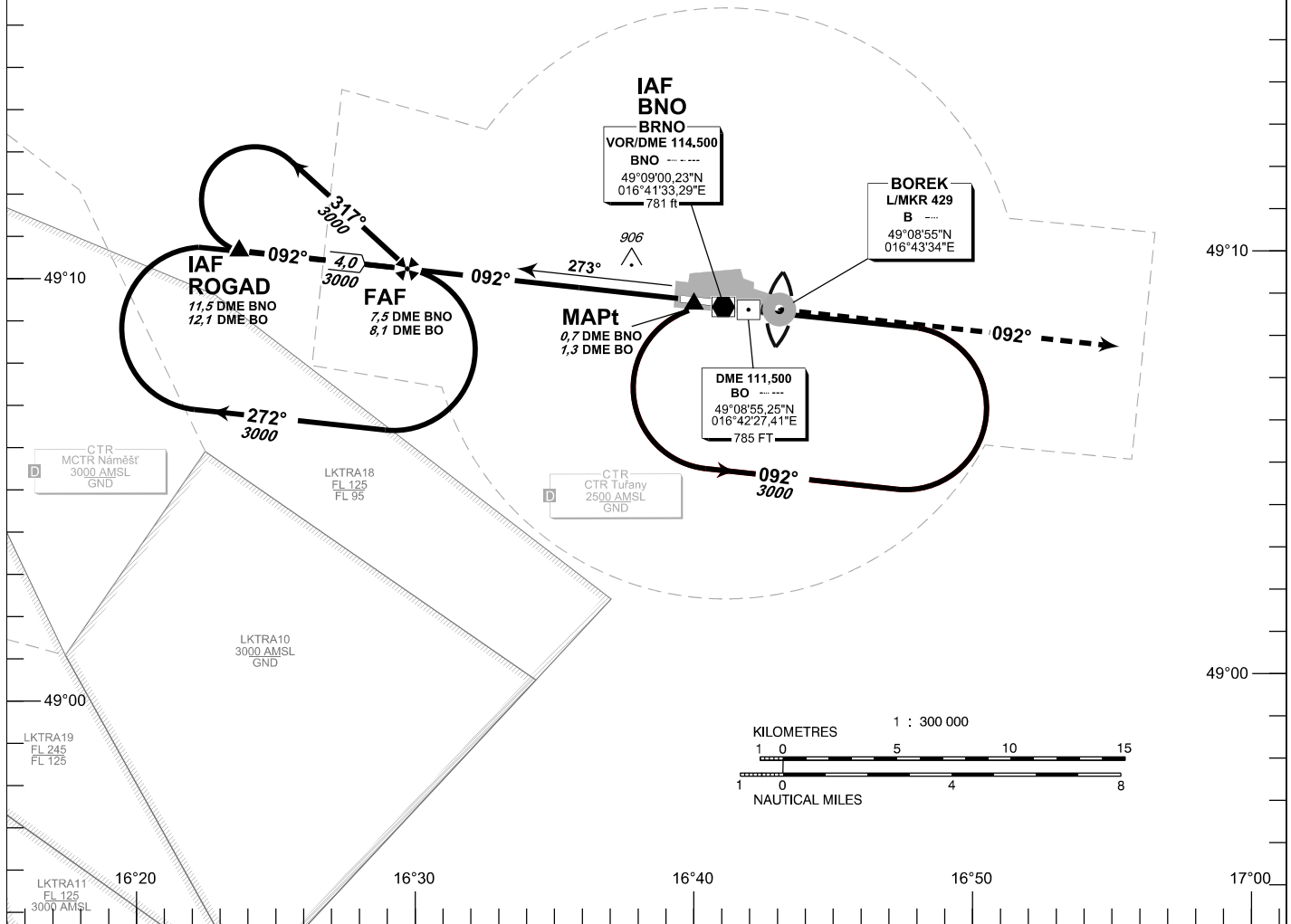
16°50



DME REQUIRED

INITIAL APPROACH
 TURN SPEED LIMITED TO MAX IAS 220 KT

BEARINGS ARE MAGNETIC
 ALTITUDES AND ELEVATIONS IN *FEET*
 AND DISTANCES IN *NM*



MISSED APPROACH:

Climb on track 092° to 4000 ft AMSL, expect vectoring. In case of RCF climb on track 092° to 8,0 NM DME BNO and turn right to VOR/DME BNO in climbing to 4000 ft AMSL.

OCA/OCH		A	B	C	D
Straight - in Approach	ft	1160/390			
Circling (South of AD Only)	ft	1210/-	1440/-	1560/-	1740/-

DME BNO NM	8	7	6	5	4	3	2
DME BO NM	8,6	7,6	6,6	5,6	4,6	3,6	2,6
DIST THR NM	7,3	6,3	5,3	4,3	3,3	2,3	1,3
ALTITUDES ft	3150	2830	2510	2190	1870	1550	1240

FAF - MAPt 6,9 NM	kt	80	100	120	140	160	180
min:sec		5:09	4:07	3:26	2:57	2:35	2:17
Rate of descent	ft/min	420	530	640	740	850	960

change: new holding

Timing Is not authorized for defining the MAPt.