

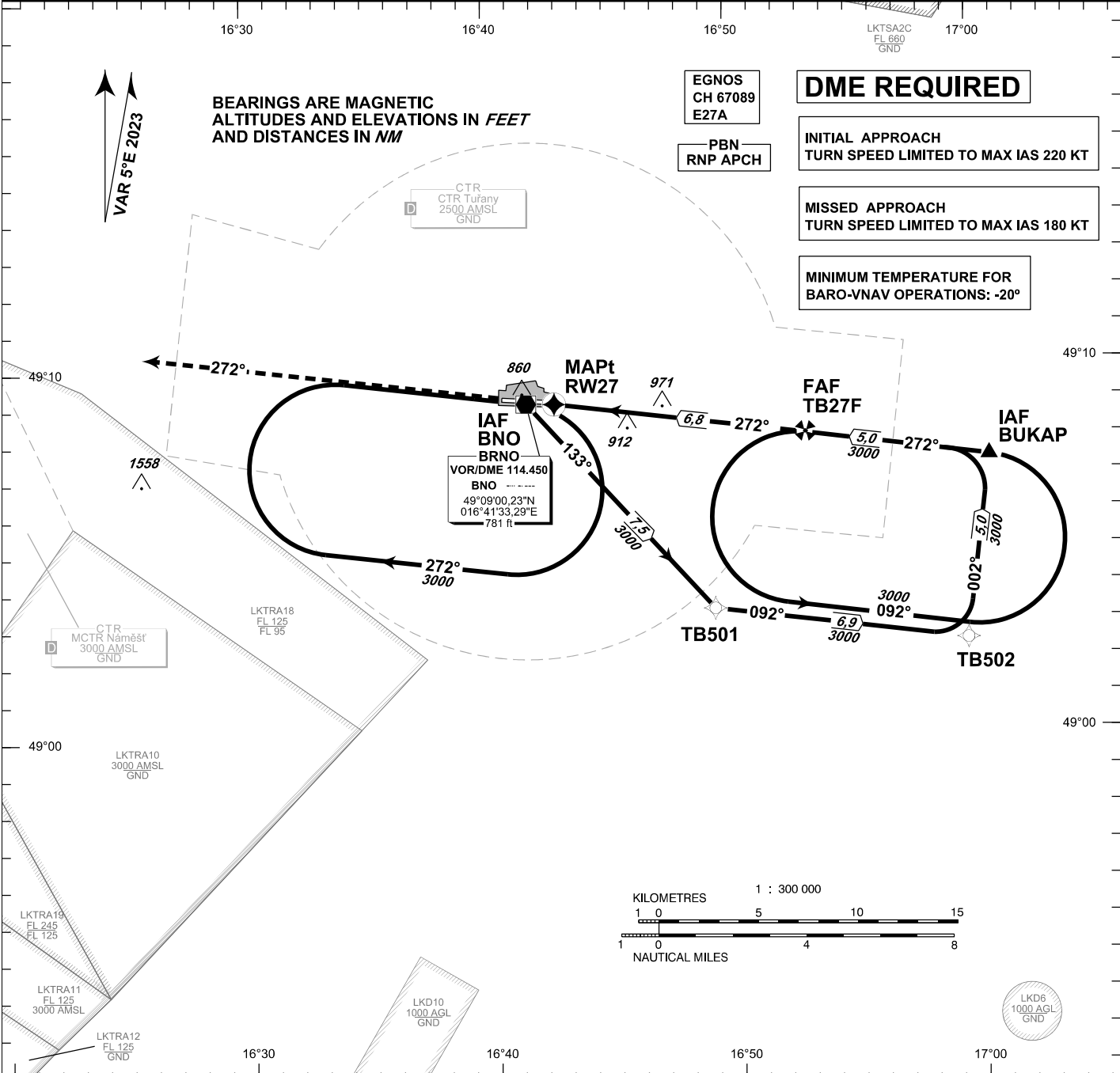
INSTRUMENT APPROACH CHART - ICAO

AERODROME ELEV 778
 THR RWY 27 ELEV 771
 OCH RELATED TO THR RWY 27

TUŘANY/TOWER 119,605
 125,430
 121,500
 PRAHA RADAR 127,350
 121,500



BRNO/Tuřany RNP RWY 27



BEARINGS ARE MAGNETIC
 ALTITUDES AND ELEVATIONS IN FEET
 AND DISTANCES IN NM

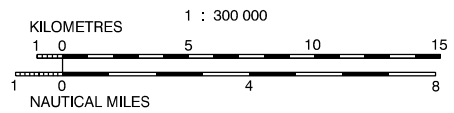
VAR 5°E 2023

DME REQUIRED

INITIAL APPROACH
 TURN SPEED LIMITED TO MAX IAS 220 KT

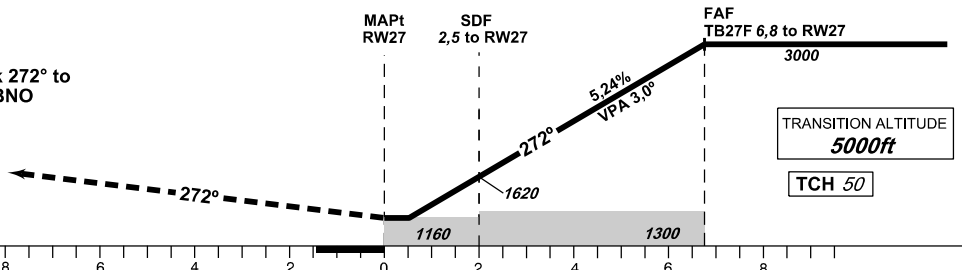
MISSED APPROACH
 TURN SPEED LIMITED TO MAX IAS 180 KT

MINIMUM TEMPERATURE FOR
 BARO-VNAV OPERATIONS: -20°



MISSED APPROACH:

Climb on track 272° to 4000 ft AMSL, expect vectoring. In case of RCF climb on track 272° to 8,0 NM DME BNO and turn right to VOR/DME BNO in climbing to 4000 ft AMSL.



THR 490859.12N 0164242.83E
 ELEV 771
 NM FM THR27

OCA/OCH		A	B	C	D
LNAV	ft		1160/390		
LNAV/VNAV	ft		1053/282		
LPV	ft		971/200		
Circling (South of AD Only)	ft	1210/-	1440/-	1560/-	1740/-

DIST THR /NM	6	5	4	3	2	1
ALTITUDES ft	2730	2410	2090	1780	1460	1140

FAF - MAPt 6,8 NM	kt	80	100	120	140	160	180
min:sec		5:08	4:06	3:25	2:56	2:34	2:17
Rate of descent ft/min		420	530	640	740	850	960

Timing is not authorized for defining the MAPt.

change: new holding

Posloupnost traťových bodů / Way point sequence

Od / From IAF BUKAP		
BUKAP	IF/IAF	fly-by
TB27F	FAF	fly-by
RW27	MAPt	fly-over

Od / From IAF VOR/DME BNO		
VOR/DME BNO	IAF	fly-by
TB501		fly-by
TB502		fly-by
BUKAP	IF	fly-by
TB27F	FAF	fly-by
RW27	MAPt	fly-over

Seznam traťových bodů / Way point list		
BUKAP	49 07 24,66 N	017 00 36,17 E
VOR/DME BNO	49 09 00,23 N	016 41 33,29 E
TB501	49 03 22,94 N	016 49 11,05 E
TB502	49 02 27,72 N	016 59 34,69 E
TB27F	49 08 04,91 N	016 53 02,78 E
RW27	49 08 59,12 N	016 42 42,83 E

SBAS FAS Data Block

Vstupní data / Input Data

Parametry / Parameters	Hodnoty / Values
Operation Type	0
SBAS Provider	1
Airport Identifier	LKT B
Runway	27
Runway Direction	0
Approach Performance Designator	0
Route Indicator	
Reference Path Data Selector	0
Reference Path Identifier	E27A
LTP/FTP Latitude	490859.1200N
LTP/FTP Longitude	0164242.8300E
LTP/FTP Ellipsoidal Height (metres)	279.2
FPAP Latitude	490910.3400N
Delta FPAP Latitude (seconds)	11.2200
FPAP Longitude	0164033.1300E
Delta FPAP Longitude (seconds)	-129.7000
Threshold Crossing Height	50
TCH Units Selector	0
Glidepath Angle (degrees)	3.00
Course Width (metres)	105.00
Length Offset (metres)	0
HAL (metres)	40.0
VAL (metres)	35.0

Výstupní data / Output Data

Parametry / Parameters	Hodnoty / Values
Data Block	10 02 14 0B 0C 1B 00 00 01 37 32 05 E0 C0 17 15 1C 06 2C 07 E8 1E A8 57 00 B8 0A FC F4 01 2C 01 64 00 C8 AF A3 2A 56 5F
Calculated CRC Value	A32A565F

Required Additional Data (not CRC wrapped)

These additional data are not required for CRC calculation, but they need to be provided to datahouses for procedure coding in ARINC 424 records.

Parametry / Parameters	Hodnoty / Values
ICAO Code	LK
LTP/FTP Orthometric Height (metres)	234.9
FPAP Orthometric Height (metres)	233.0

