

ČESKÁ REPUBLIKA
CZECH REPUBLIC

ŘÍZENÍ LETOVÉHO PROVOZU ČR, s.p.
Středisko AIM
AIR NAVIGATION SERVICES OF THE C.R.
AIM Centre

Navigační 787
252 61 Jeneč

AIP
AIRAC AMDT

8/24

PUBLICATION DATE: 25 JUL 24

+420 220 372 841
+420 220 372 702
aim@ans.cz
https://aim.rlp.cz

1) Datum účinnosti

Tato AIRAC AMDT nabývá účinnosti **0000 UTC** dne **5 SEP 24**. V tento den zařadte do AIP ČR přiložené strany.

2) Tato AIP AIRAC AMDT obsahuje:

– BRNO/Tuřany (LKTb) - Nová vyčkávání.

1) Effective date

This AIRAC AMDT becomes effective at **0000 UTC** on **5 SEP 24**. Insert the attached pages into the AIP CR that day.

2) This AIP AIRAC AMDT includes:

– BRNO/Tuřany (LKTb) - New holding patterns.

3) Zrušte následující strany

Destroy the following pages

AD	LKTb AD 2-37-1	21 MAR 24
	LKTb AD 2-37-3	21 MAR 24
	LKTb AD 2-37-4	21 MAR 24
	LKTb AD 2-37-5	21 MAR 24
	LKTb AD 2-37-7	21 MAR 24
	LKTb AD 2-37-9	21 MAR 24
	LKTb AD 2-37-10	21 MAR 24
	LKTb AD 2-37-11	21 MAR 24
	LKTb AD 2-37-13	21 MAR 24

Zařadte následující strany

Insert the following pages

AD	LKTb AD 2-37-1	5 SEP 24
	LKTb AD 2-37-3	5 SEP 24
	LKTb AD 2-37-4	5 SEP 24
	LKTb AD 2-37-5	5 SEP 24
	LKTb AD 2-37-7	5 SEP 24
	LKTb AD 2-37-9	5 SEP 24
	LKTb AD 2-37-10	5 SEP 24
	LKTb AD 2-37-11	5 SEP 24
	LKTb AD 2-37-13	5 SEP 24

4) Ruční opravy: NIL

5) Proved'te záznam této AIP AIRAC AMDT do GEN 0.2.

6) Následující publikace jsou zahrnuty do této AIP AIRAC AMDT a tím zrušeny:

AIP SUP: NIL

AIC: NIL

Následující NOTAMy jsou zahrnuty do této AIP AIRAC AMDT a budou zrušeny NOTAMem.

NOTAM: NIL

4) Hand amendments: NIL

5) Record this AIP AIRAC AMDT to GEN 0.2.

6) The following publications have been incorporated in this AIP AIRAC AMDT and therefore cancelled:

AIP SUP: NIL

AIC: NIL

The following NOTAMs are incorporated in this AIP AIRAC AMDT. They will be cancelled by NOTAM.

NOTAM: NIL

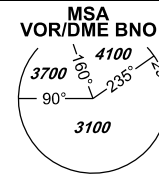
- KONEC -

- END -

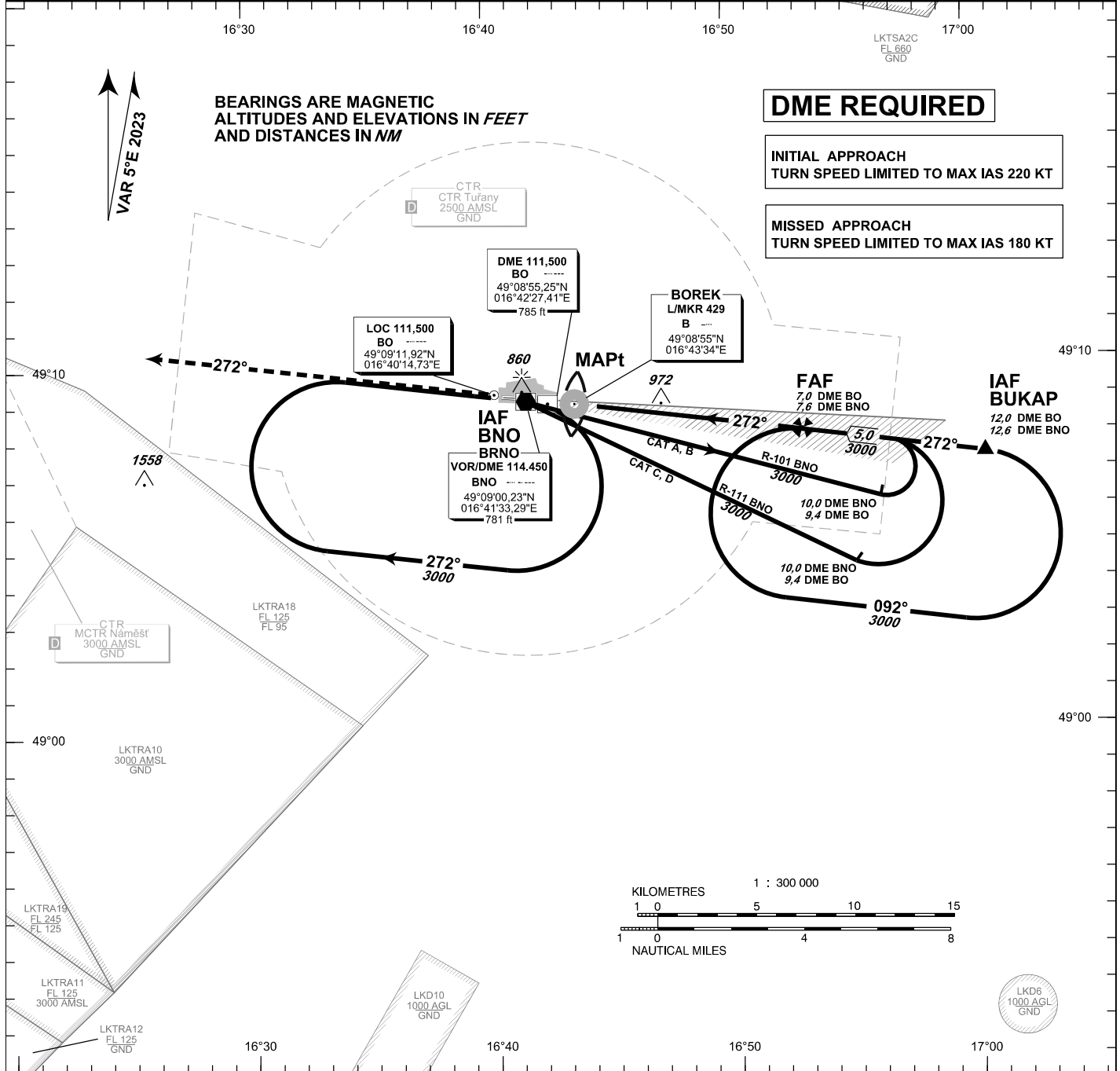
INSTRUMENT APPROACH CHART - ICAO

AERODROME ELEV **778**
 THR RWY 27 ELEV **771**
 OCH RELATED TO THR RWY 27

TUŘANY/TOWER **119,605**
125,430
121,500
 PRAHA RADAR **127,350**
121,500



BRNO/Tuřany ILS
RWY 27

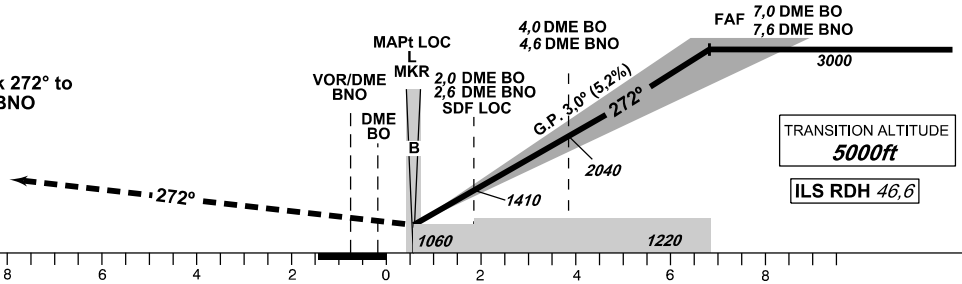


MISSED APPROACH:

Climb on track 272° to 4000 ft AMSL, expect vectoring. In case of RCF climb on track 272° to 8,0 NM DME BNO and turn right to VOR/DME BNO in climbing to 4000 ft AMSL.

THR 490859.12N 0164242.83E
 ELEV 771

NM FM THR27



OCA/OCH		A	B	C	D
Straight - in	Cat I	ft 927/156	939/169	947/176	958/188
	LOC	ft 1060/290			
Circling (South of AD Only)		ft 1210/-	1440/-	1560/-	1740/-

DME BO NM	7	6	5	4	3	2	1
DME BNO NM	7,6	6,6	5,6	4,6	3,6	2,6	1,6
DIST THR NM	6,8	5,8	4,8	3,8	2,8	1,8	0,8
ALTITUDES ft	3000	2680	2360	2040	1720	1410	1090

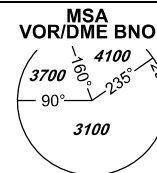
kt	80	100	120	140	160	180
FAF - MAPt 6,3 NM	min:sec 4:42	3:46	3:08	2:41	2:21	2:06
Rate of descent	ft/min 420	530	640	740	850	960

Timing is not authorized for defining the MAPt.

INSTRUMENT APPROACH CHART - ICAO

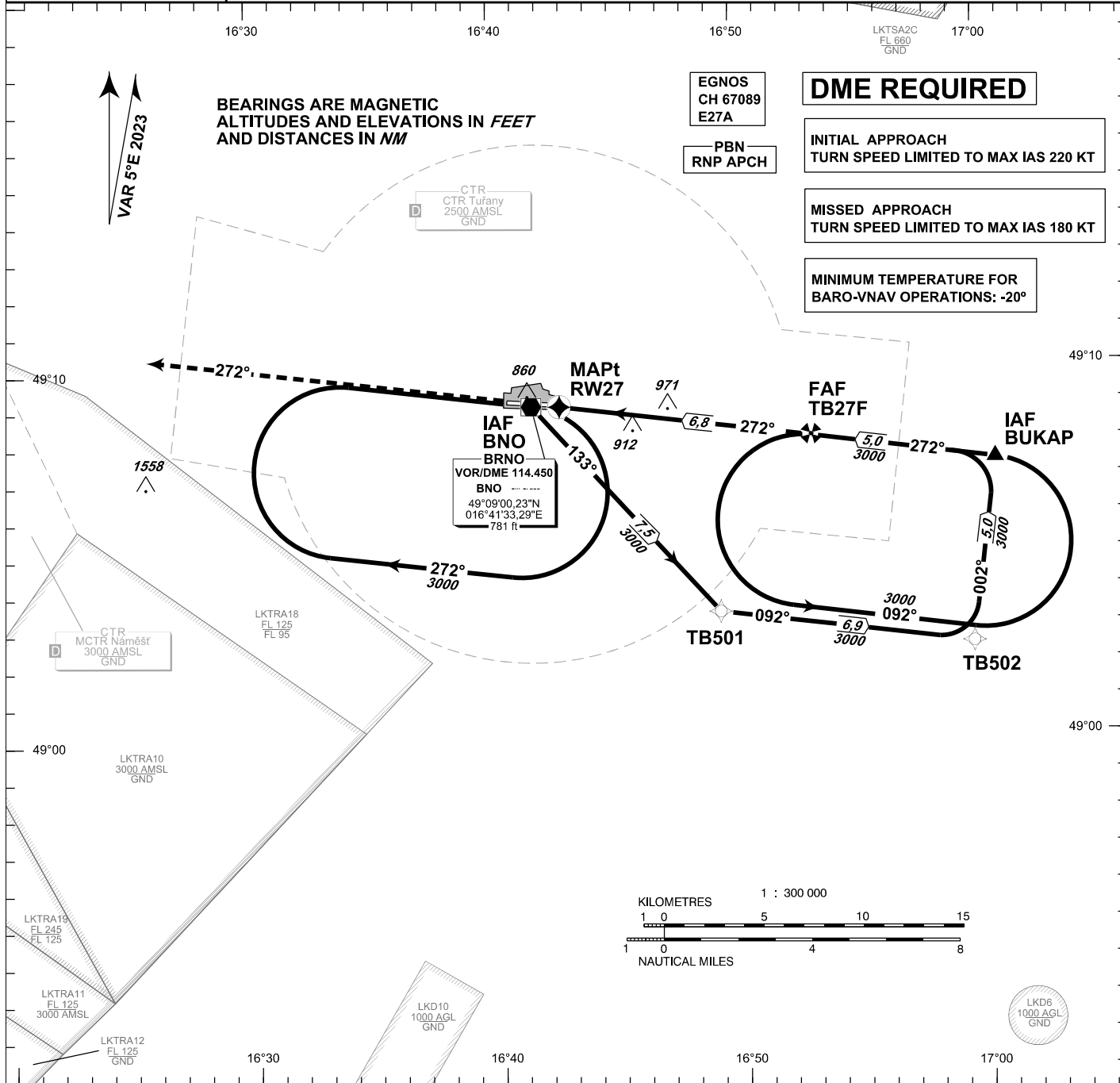
AERODROME ELEV 778
 THR RWY 27 ELEV 771
 OCH RELATED TO THR RWY 27

TUŘANY/TOWER 119,605
 125,430
 121,500
 PRAHA RADAR 127,350
 121,500



BRNO/Tuřany RNP

RWY 27



BEARINGS ARE MAGNETIC
 ALTITUDES AND ELEVATIONS IN FEET
 AND DISTANCES IN NM

VAR 5°E 2023

EGNOS
 CH 67089
 E27A

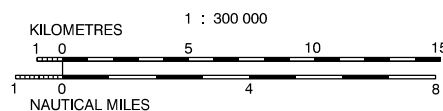
DME REQUIRED

INITIAL APPROACH
 TURN SPEED LIMITED TO MAX IAS 220 KT

MISSED APPROACH
 TURN SPEED LIMITED TO MAX IAS 180 KT

MINIMUM TEMPERATURE FOR
 BARO-VNAV OPERATIONS: -20°

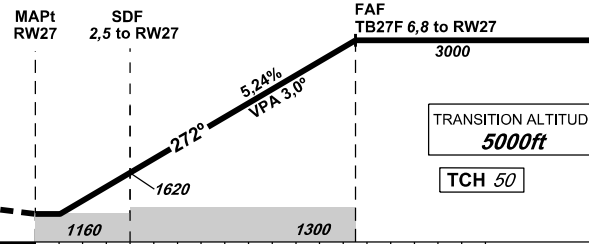
PBN
 RNP APCH



LKD6
 1000 AGL
 GND

MISSED APPROACH:

Climb on track 272° to 4000 ft AMSL, expect vectoring. In case of RCF climb on track 272° to 8,0 NM DME BNO and turn right to VOR/DME BNO in climbing to 4000 ft AMSL.



TRANSITION ALTITUDE
5000ft

TCH 50

THR 490859.12N 0164242.83E

ELEV 771

NM FM THR27

OCA/OCH		A	B	C	D
LNAV	ft		1160/390		
LNAV/VNAV	ft		1053/282		
LPV	ft		971/200		
Circling (South of AD Only)	ft	1210/-	1440/-	1560/-	1740/-

DIST THR NM	6	5	4	3	2	1
ALTITUDES ft	2730	2410	2090	1780	1460	1140

FAF - MAPt 6,8 NM	kt	80	100	120	140	160	180
min:sec		5:08	4:06	3:25	2:56	2:34	2:17
Rate of descent	ft/min	420	530	640	740	850	960

Timing is not authorized for defining the MAPt.

change: new holding

Posloupnost traťových bodů / Way point sequence

Od / From IAF BUKAP		
BUKAP	IF/IAF	fly-by
TB27F	FAF	fly-by
RW27	MAPt	fly-over

Od / From IAF VOR/DME BNO		
VOR/DME BNO	IAF	fly-by
TB501		fly-by
TB502		fly-by
BUKAP	IF	fly-by
TB27F	FAF	fly-by
RW27	MAPt	fly-over

Seznam traťových bodů / Way point list		
BUKAP	49 07 24,66 N	017 00 36,17 E
VOR/DME BNO	49 09 00,23 N	016 41 33,29 E
TB501	49 03 22,94 N	016 49 11,05 E
TB502	49 02 27,72 N	016 59 34,69 E
TB27F	49 08 04,91 N	016 53 02,78 E
RW27	49 08 59,12 N	016 42 42,83 E

SBAS FAS Data Block

Vstupní data / Input Data

Parametry / Parameters	Hodnoty / Values
Operation Type	0
SBAS Provider	1
Airport Identifier	LKT B
Runway	27
Runway Direction	0
Approach Performance Designator	0
Route Indicator	
Reference Path Data Selector	0
Reference Path Identifier	E27A
LTP/FTP Latitude	490859.1200N
LTP/FTP Longitude	0164242.8300E
LTP/FTP Ellipsoidal Height (metres)	279.2
FPAP Latitude	490910.3400N
Delta FPAP Latitude (seconds)	11.2200
FPAP Longitude	0164033.1300E
Delta FPAP Longitude (seconds)	-129.7000
Threshold Crossing Height	50
TCH Units Selector	0
Glidepath Angle (degrees)	3.00
Course Width (metres)	105.00
Length Offset (metres)	0
HAL (metres)	40.0
VAL (metres)	35.0

Výstupní data / Output Data

Parametry / Parameters	Hodnoty / Values
Data Block	10 02 14 0B 0C 1B 00 00 01 37 32 05 E0 C0 17 15 1C 06 2C 07 E8 1E A8 57 00 B8 0A FC F4 01 2C 01 64 00 C8 AF A3 2A 56 5F
Calculated CRC Value	A32A565F

Required Additional Data (not CRC wrapped)

These additional data are not required for CRC calculation, but they need to be provided to datahouses for procedure coding in ARINC 424 records.

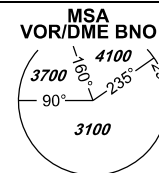
Parametry / Parameters	Hodnoty / Values
ICAO Code	LK
LTP/FTP Orthometric Height (metres)	234.9
FPAP Orthometric Height (metres)	233.0



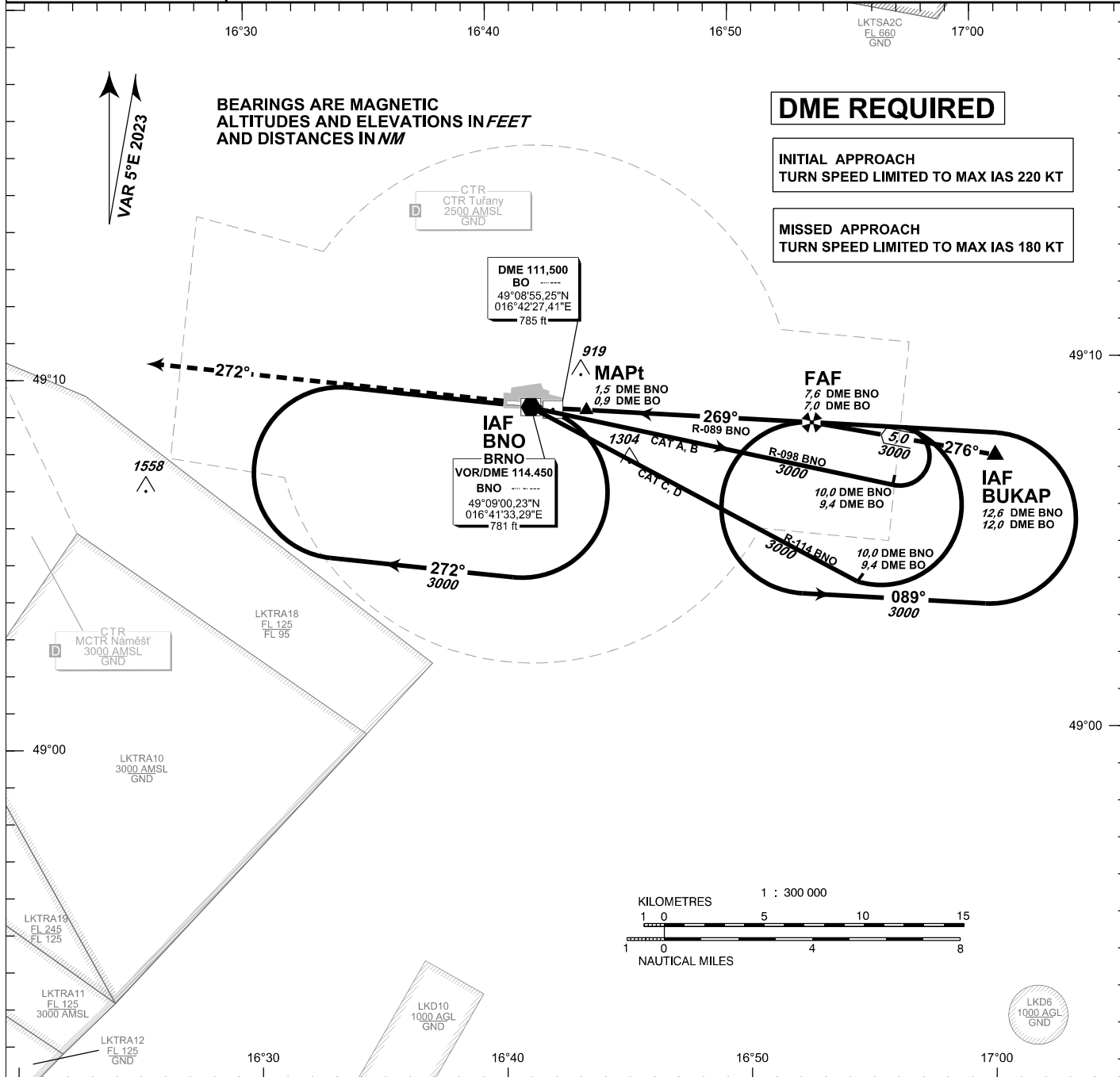
INSTRUMENT APPROACH CHART - ICAO

AERODROME ELEV **778**
 THR RWY 27 ELEV **771**
 OCH RELATED TO THR RWY 27

TUŘANY/TOWER **119,605**
125,430
121,500
 PRAHA RADAR **127,350**
121,500



BRNO/Tuřany VOR
RWY 27

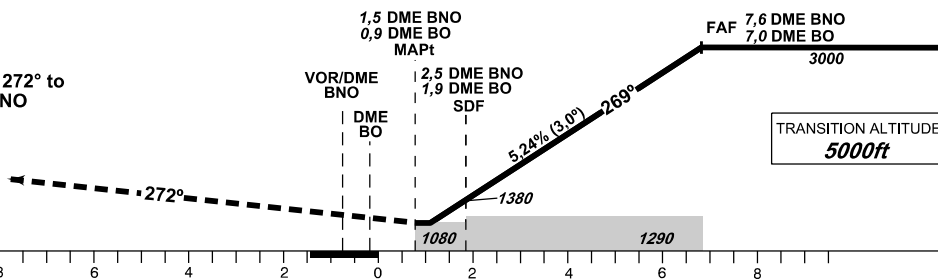


MISSED APPROACH:

Climb on track 272° to 4000 ft AMSL, expect vectoring. In case of RCF climb on track 272° to 8,0 NM DME BNO and turn right to VOR/DME BNO in climbing to 4000 ft AMSL.

THR 490859.12N 0164242.83E
 ELEV 771

NM FM THR27



OCA/OCH	A	B	C	D	
Straight - in Approach	ft	1080/300			
Circling (South of AD Only)	ft	1210/-	1440/-	1560/-	1740/-

DME BNO /NM	7	6	5	4	3	2
DME BO /NM	6,4	5,4	4,4	3,4	2,4	1,4
DIST THR /NM	6,2	5,2	4,2	3,2	2,2	1,2
ALTITUDES ft	2810	2490	2170	1850	1530	1220

kt	80	100	120	140	160	180	
FAF - MAPt 6,1 NM	min:sec	4:34	3:39	3:03	2:37	2:17	2:02
Rate of descent	ft./min	420	530	640	740	850	960

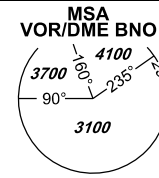
change: new holding

Timing is not authorized for defining the MAPt.

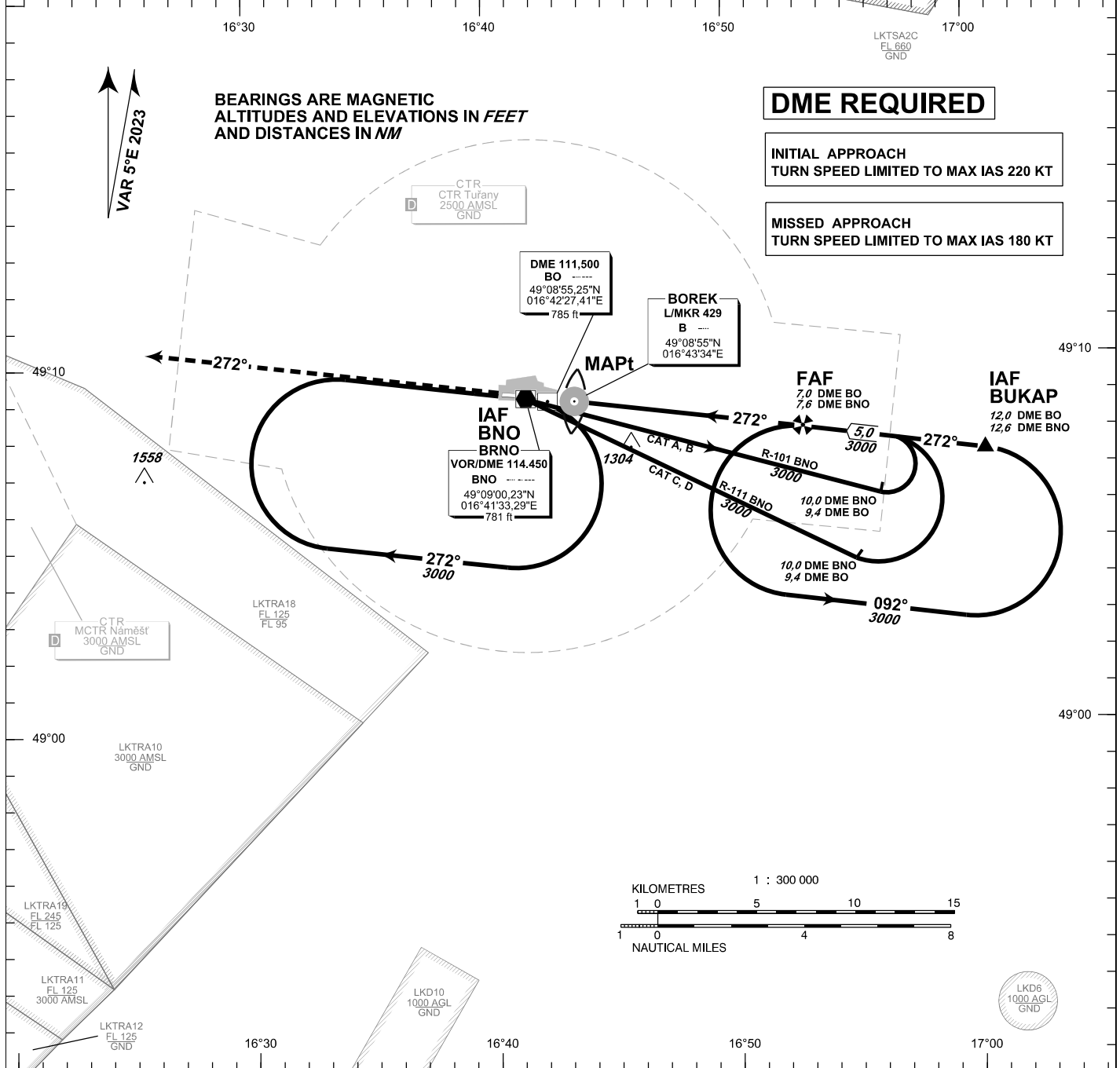
INSTRUMENT APPROACH CHART - ICAO

AERODROME ELEV **778**
 THR RWY 27 ELEV **771**
 OCH RELATED TO THR RWY 27

TUŘANY/TOWER **119,605**
125,430
121,500
 PRAHA RADAR **127,350**
121,500



BRNO/Tuřany NDB
RWY 27

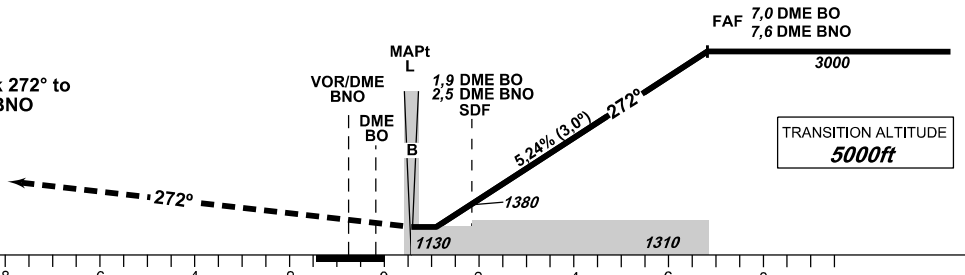


MISSED APPROACH:

Climb on track 272° to 4000 ft AMSL, expect vectoring. In case of RCF climb on track 272° to 8,0 NM DME BNO and turn right to VOR/DME BNO in climbing to 4000 ft AMSL.

THR 490859.12N 0164242.83E
 ELEV 771

NM FM THR27



OCA/OCH	A	B	C	D	
Straight - in Approach	ft	1130/350			
Circling (South of AD Only)	ft	1210/-	1440/-	1560/-	1740/-

DME BO NM	7	6	5	4	3	2
DME BNO NM	7,6	6,6	5,6	4,6	3,6	2,6
DIST THR NM	6,8	5,8	4,8	3,8	2,8	1,8
ALTITUDES ft	3000	2680	2360	2040	1720	1410

kt	80	100	120	140	160	180	
FAF - MAPt 6,3 NM	min:sec	4:42	3:46	3:08	2:41	2:21	2:06
Rate of descent	ft/min	420	530	640	740	850	960

change: new holding

Timing is not authorized for defining the MAPt.

INSTRUMENT APPROACH CHART - ICAO

AERODROME ELEV **778**
 THR RWY 09 ELEV **764**
 OCH RELATED TO THR RWY 09

TUŘANY/TOWER **119,605**
125,430
121,500

PRAHA RADAR **127,350**
121,500



BRNO/Tuřany RNP RWY 09

MINIMUM TEMPERATURE FOR BARO-VNAV OPERATIONS: **-20°C**

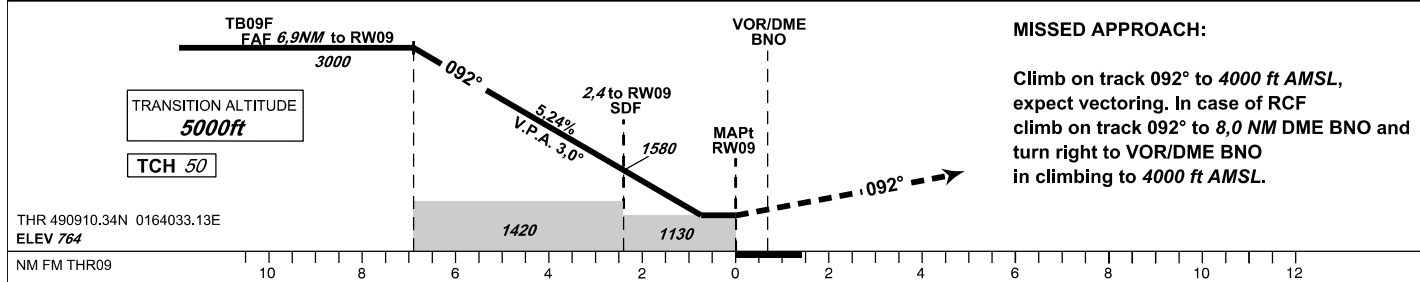
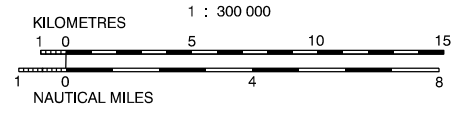
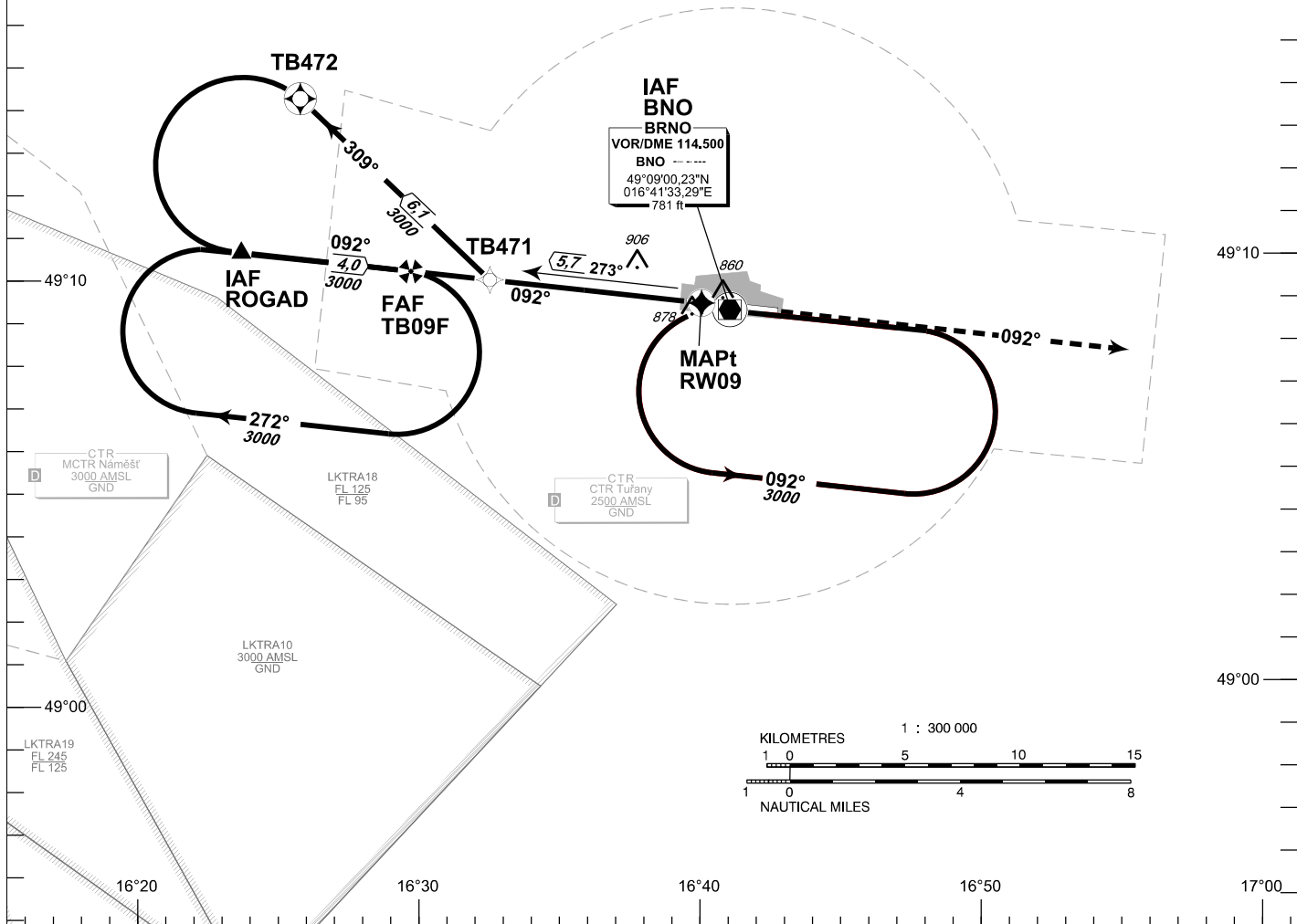
INITIAL APPROACH TURN SPEED LIMITED TO MAX IAS 220 KT

EGNOS CH 95975 E09A

PBN RNP APCH

BEARINGS ARE MAGNETIC
 ALTITUDES AND ELEVATIONS IN FEET
 AND DISTANCES IN NM

DME REQUIRED



OCA/OCH	A	B	C	D
LNAV	ft 1130/360			
LNAV/VNAV	ft 1040/276			
LPV	ft 1014 / 250	ft 1014 / 250	ft 1014 / 250	ft 1014 / 250
Circling (South of AD Only)	ft 1210 / -	ft 1440 / -	ft 1560 / -	ft 1740 / -

DIST THR NM	6	5	4	3	2	1
ALTITUDES ft	2720	2410	2090	1770	1450	1130

FAF - MAPt 6,9 NM	kt	80	100	120	140	160	180
		min:sec	5:09	4:07	3:26	2:57	2:35
Rate of descent	ft/min	420	530	640	740	850	960

change: new holding

Timing is not authorized for defining the MAPt.

Posloupnost traťových bodů / Waypoint sequence

Od / From IAF ROGAD		
ROGAD	IF/IAF	fly-by
TB09F	FAF	fly-by
RW09	MAPt	fly-over

Od / From IAF VOR/DME BNO		
VOR/DME BNO	IAF	fly-by
TB471		fly-by
TB472		fly-over
ROGAD	IF	fly-by
TB09F	FAF	fly-by
RW09	MAPt	fly-over

Seznam traťových bodů / Way point list		
ROGAD	49 10 34,18 N	016 24 08,14 E
VOR/DME BNO	49 09 00,23 N	016 41 33,29 E
TB471	49 09 49,20 N	016 33 00,04 E
TB472	49 14 09,35 N	016 26 20,84 E
TB09F	49 10 03,58 N	016 30 10,89 E
RW09	49 09 10,34 N	016 40 33,13 E

SBAS FAS Data Block

Vstupní data / Input Data

Parametry / Parameters	Hodnoty / Values
Operation Type	0
SBAS Provider	1
Airport Identifier	LKTB
Runway	09
Runway Direction	0
Approach Performance Designator	0
Route Indicator	
Reference Path Data Selector	0
Reference Path Identifier	E09A
LTP/FTP Latitude	490910.3400N
LTP/FTP Longitude	0164033.1300E
LTP/FTP Ellipsoidal Height (metres)	278.0
FPAP Latitude	490859.1200N
Delta FPAP Latitude (seconds)	-11.2200
FPAP Longitude	0164242.8300E
Delta FPAP Longitude (seconds)	129.7000
Threshold Crossing Height	50
TCH Units Selector	0
Glidepath Angle (degrees)	3.00
Course Width (metres)	105.00
Length Offset (metres)	0
HAL (metres)	40.0
VAL (metres)	35.0

Výstupní data / Output Data

Parametry / Parameters	Hodnoty / Values
Data Block	10 02 14 0B 0C 09 00 00 01 39 30 05 88 18 18 15 D4 10 28 07 DC 1E 58 A8 FF 48 F5 03 F4 01 2C 01 64 00 C8 AF F8 E7 B0 18
Calculated CRC Value	F8E7B018

Required Additional Data (not CRC wrapped)

These additional data are not required for CRC calculation, but they need to be provided to datahouses for procedure coding in ARINC 424 records.

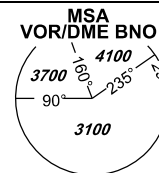
Parametry / Parameters	Hodnoty / Values
ICAO Code	LK
LTP/FTP Orthometric Height (metres)	233.0
FPAP Orthometric Height (metres)	234.9



INSTRUMENT APPROACH CHART - ICAO

AERODROME ELEV **778**
 THR RWY 09 ELEV **764**
 OCH RELATED TO THR RWY 09

TUŘANY/TOWER **119,605**
125,430
121,500
 PRAHA RADAR **127,350**
121,500



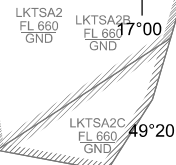
BRNO/Tuřany VOR
RWY 09

16°20

16°30

16°40

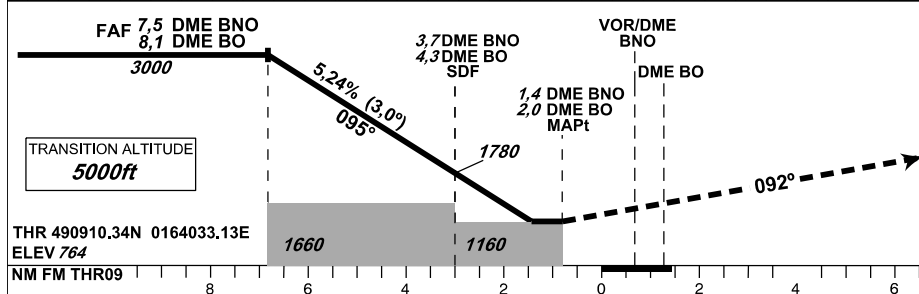
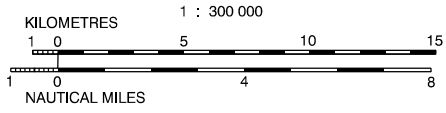
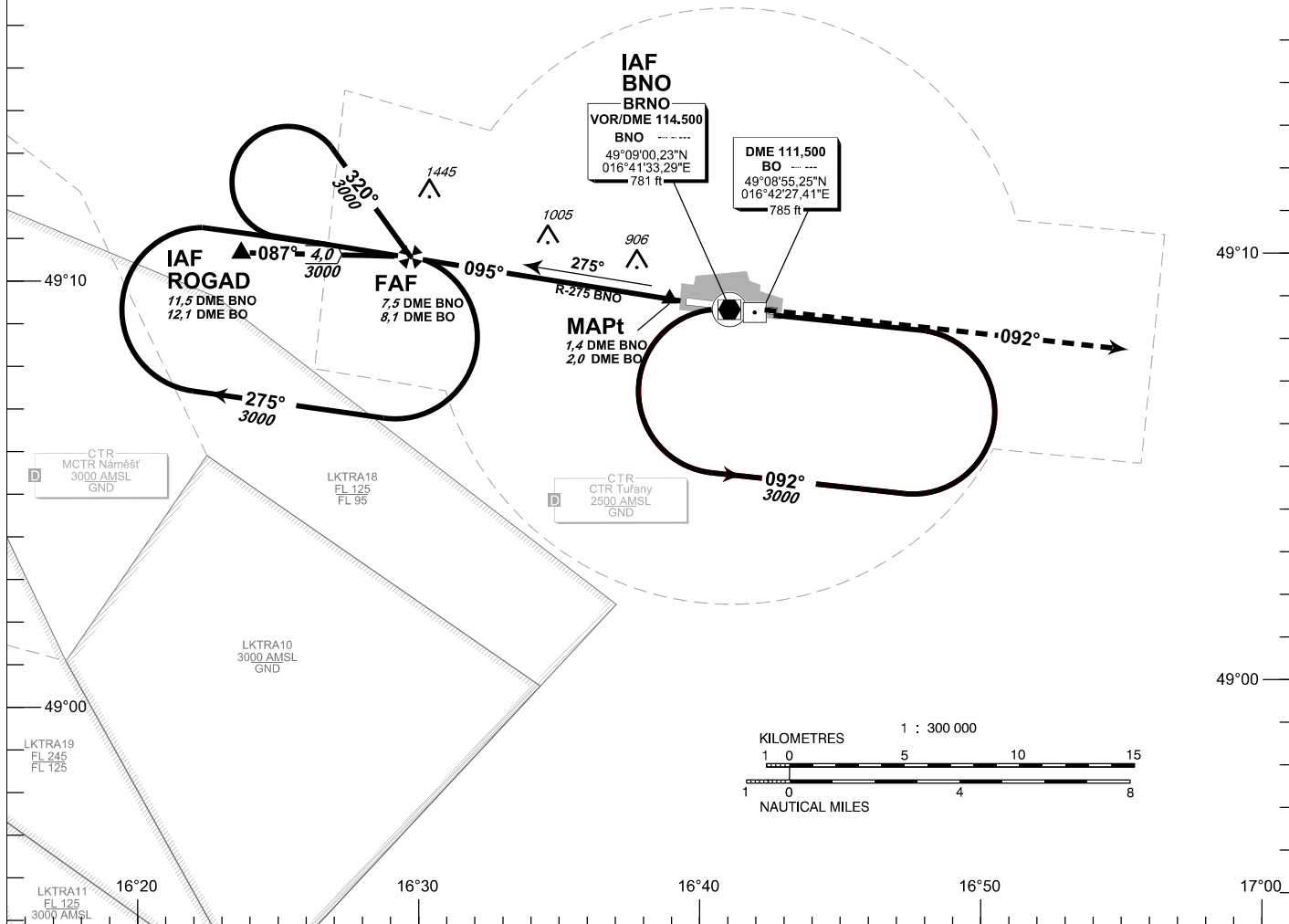
16°50



DME REQUIRED

INITIAL APPROACH
 TURN SPEED LIMITED TO MAX IAS 220 KT

BEARINGS ARE MAGNETIC
 ALTITUDES AND ELEVATIONS IN FEET
 AND DISTANCES IN NM



MISSED APPROACH:
 Climb on track 092° to 4000 ft AMSL, expect vectoring. In case of RCF climb on track 092° to 8,0 NM DME BNO and turn right to VOR/DME BNO. In climbing to 4000 ft AMSL.

OCA/OCH	A	B	C	D
Straight - in Approach	ft 1160/390			
Circling (South of AD Only)	ft 1210/-	ft 1440/-	ft 1560/-	ft 1740/-

DME BNO NM	8	7	6	5	4	3	2
DME BO NM	8,6	7,6	6,6	5,6	4,6	3,6	2,6
DIST THR NM	7,3	6,3	5,3	4,3	3,3	2,3	1,3
ALTITUDES ft	3150	2830	2510	2190	1870	1550	1240

FAF - MAPt 6,1 NM	kt	80	100	120	140	160	180
Rate of descent	min:sec	4:35	3:40	3:03	2:37	2:17	2:02
	ft/min	420	530	640	740	850	960

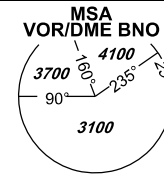
change: new holding

Timing is not authorized for defining the MAPt.

INSTRUMENT APPROACH CHART - ICAO

AERODROME ELEV **778**
 THR RWY 09 ELEV **764**
 OCH RELATED TO THR RWY 09

TUŘANY/TOWER **119,605**
125,430
121,500
 PRAHA RADAR **127,350**
121,500



BRNO/Tuřany NDB
RWY 09

16°20

16°30

16°40

16°50

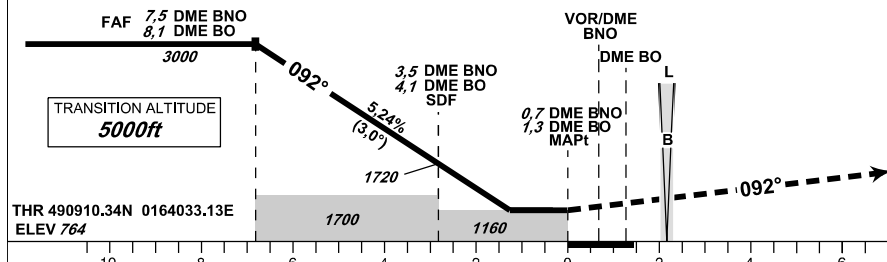
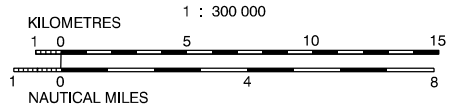
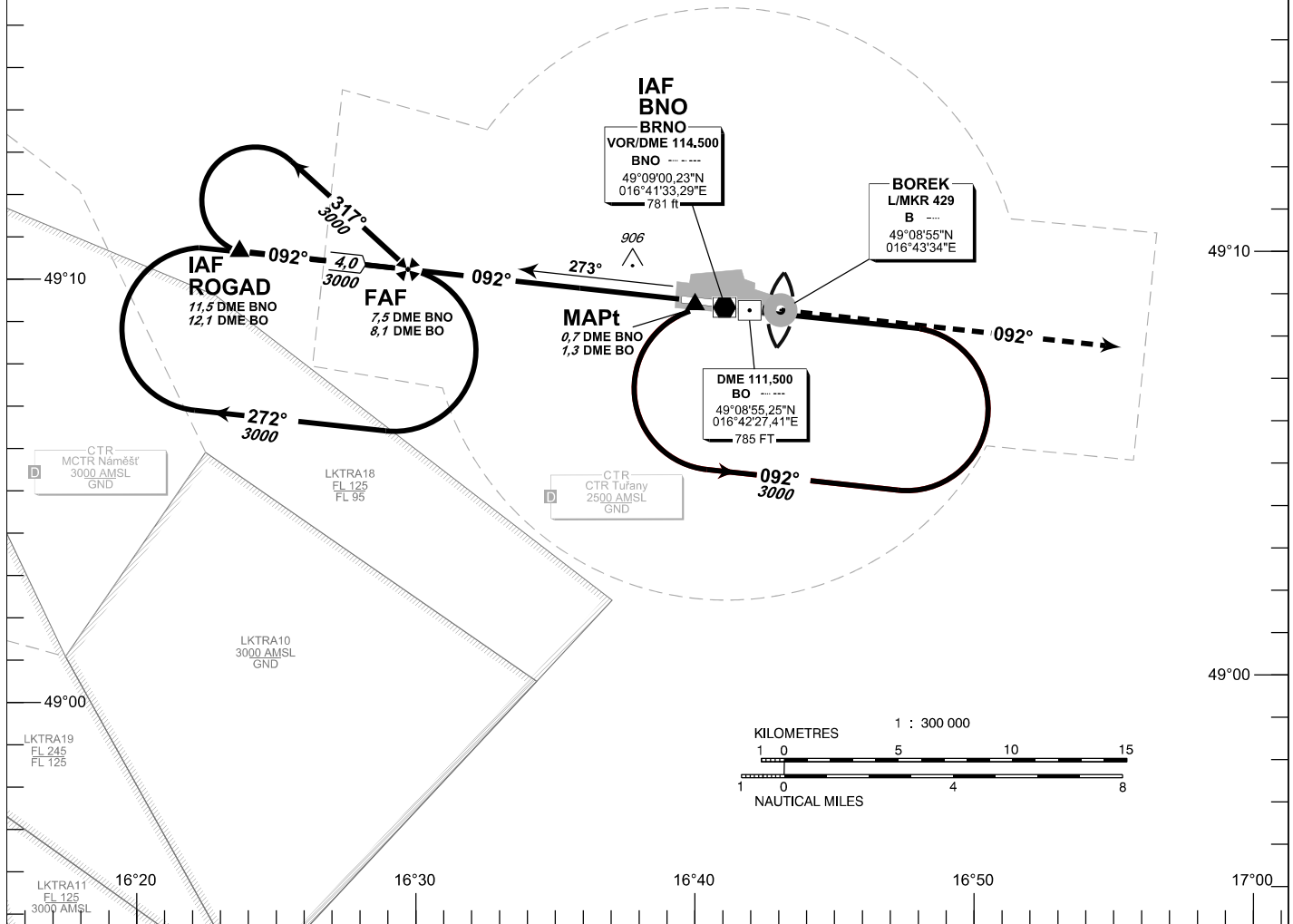
17°00



DME REQUIRED

INITIAL APPROACH
 TURN SPEED LIMITED TO MAX IAS 220 KT

BEARINGS ARE MAGNETIC
 ALTITUDES AND ELEVATIONS IN *FEET*
 AND DISTANCES IN *NM*



MISSED APPROACH:

Climb on track 092° to 4000 ft AMSL, expect vectoring. In case of RCF climb on track 092° to 8,0 NM DME BNO and turn right to VOR/DME BNO in climbing to 4000 ft AMSL.

OCA/OCH		A	B	C	D
Straight - in Approach	ft	1160/390			
Circling (South of AD Only)	ft	1210/-	1440/-	1560/-	1740/-

DME BNO NM	8	7	6	5	4	3	2
DME BO NM	8,6	7,6	6,6	5,6	4,6	3,6	2,6
DIST THR NM	7,3	6,3	5,3	4,3	3,3	2,3	1,3
ALTITUDES ft	3150	2830	2510	2190	1870	1550	1240

FAF - MAPt 6,9 NM	kt	80	100	120	140	160	180
Rate of descent	min:sec	5:09	4:07	3:26	2:57	2:35	2:17
	ft/min	420	530	640	740	850	960

change: new holding

Timing Is not authorized for defining the MAPt.

