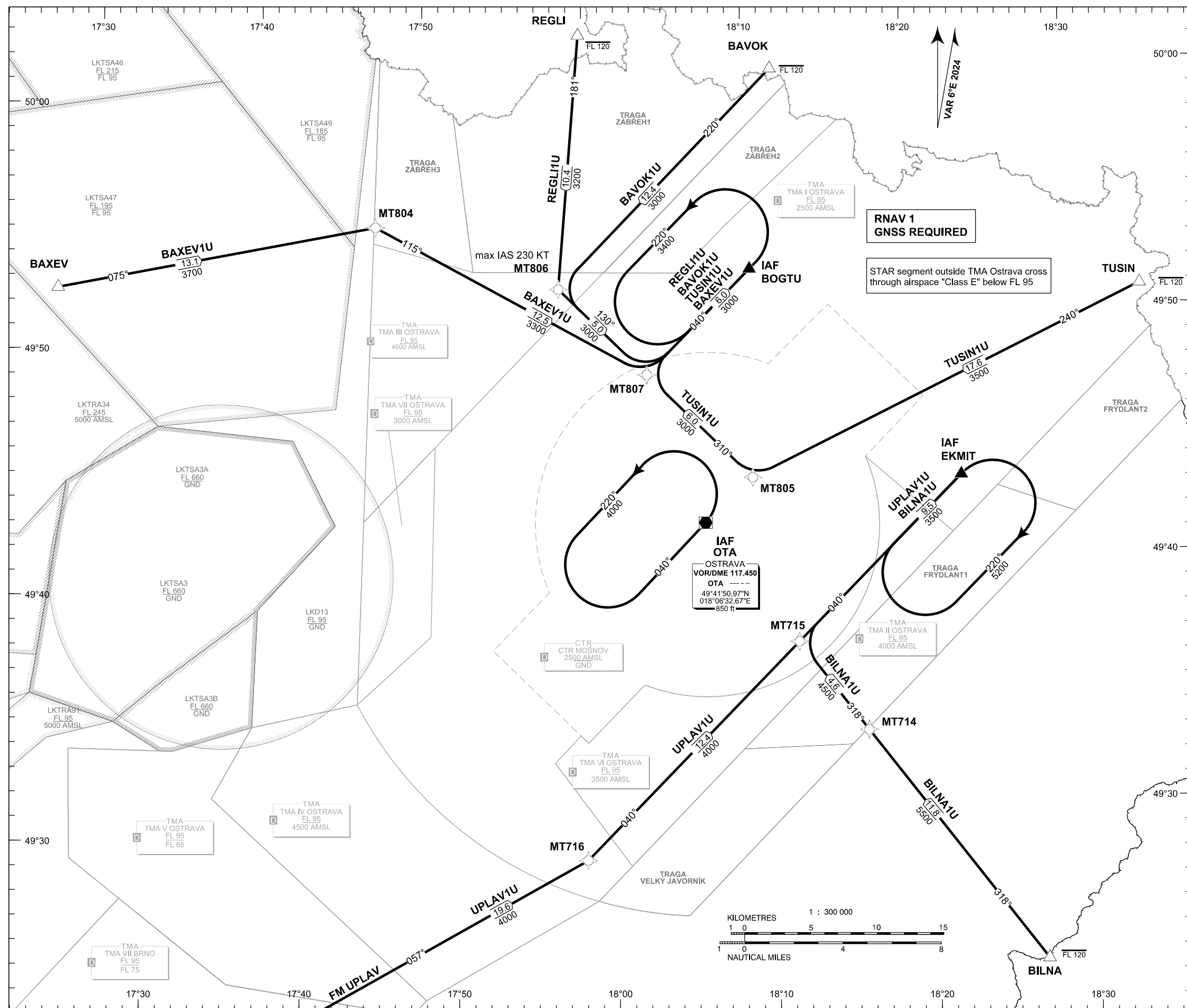
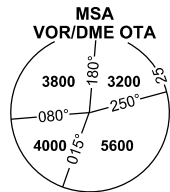


STANDARD ARRIVAL CHART-
INSTRUMENT (STAR) - ICAO

OSTRAVA/MOŠNOV
RNAV STAR RWY 22



PRAHA RADAR	119.375
MOŠNOV DELIVERY	128.525
MOŠNOV TOWER	120.805
MOŠNOV ATIS	118.055
EMERGENCY FREQ	121.500



BEARINGS, TRACKS AND RADIALS ARE MAGNETIC
ALTITUDES AND ELEVATIONS ARE IN FEET
DISTANCES ARE IN NM

TRANSITION ALTITUDE
5000 FT

CHANGE : VAR, chart revision

Recommended coding:

Designator			Route					Remarks		
Path Terminator	Waypoint			Cours / Track MAG° (True°)	DIST NM	Turn Direction	Constraints		Nav Spec.	Remarks
	ID	Flyover	Coordinates				Crossing ALT	Speed		
BAVOK1U (BAVOK ONE UNIFORM ARRIVAL)			BAVOK - MT806 - MT807 - BOGTU					---		
IF	BAVOK	NO	500010.0000N 0181143.0000E	---	---	---	FL120-	---	RNAV 1	---
TF	MT806	NO	495132.73N 0175753.35E	220 (226.08)	12.4	---	---	K230-	RNAV 1	---
TF	MT807	NO	494756.37N 0180313.58E	130 (136.21)	5.0	LEFT	---	K230-	RNAV1	---
TF	BOGTU	NO	495204.59N 0180955.48E	040 (046.28)	6.0	LEFT	---	K230-	RNAV 1	IAF
BAXEV1U (BAXEV ONE UNIFORM ARRIVAL)			BAXEV - MT804 - MT807 - BOGTU					---		
IF	BAXEV	NO	495223.68N 0172629.37E	---	---	---	---	---	RNAV 1	---
TF	MT804	NO	495419.91N 0174633.70E	075 (081.38)	13.1	---	---	---	RNAV 1	---
TF	MT807	NO	494756.37N 0180313.58E	115 (120.57)	12.5	RIGHT	---	---	RNAV1	---
TF	BOGTU	NO	495204.59N 0180955.48E	040 (046.28)	6.0	LEFT	---	---	RNAV 1	IAF
BILNA1U (BILNA ONE UNIFORM ARRIVAL)			BILNA - MT714 - MT715 - EKMIT					---		
IF	BILNA	NO	492336.79N 0182650.28E	---	---	---	FL120-	---	RNAV 1	---
TF	MT714	NO	493311.02N 0181613.60E	318 (324.22)	11.8	---	---	---	RNAV 1	---
TF	MT715	NO	493652.54N 0181206.62E	318 (324.09)	4.6	---	---	---	RNAV 1	---
TF	EKMIT	NO	494323.64N 0182240.63E	040 (046.39)	9.5	RIGHT	---	---	RNAV 1	IAF
REGL1U (REGLI ONE UNIFORM ARRIVAL)			REGLI - MT806 - MT807 - BOGTU					---		
IF	REGLI	NO	500149.0000N 0175944.0000E	---	---	---	FL120-	---	RNAV 1	---
TF	MT806	NO	495132.73N 0175753.35E	181 (186.62)	10.4	---	---	---	RNAV 1	---
TF	MT807	NO	494756.37N 0180313.58E	130 (136.21)	5.0	LEFT	---	---	RNAV1	---
TF	BOGTU	NO	495204.59N 0180955.48E	040 (046.28)	6.0	LEFT	---	---	RNAV 1	IAF
TUSIN1U (TUSIN ONE UNIFORM ARRIVAL)			TUSIN - MT805 - MT807 - BOGTU					---		
IF	TUSIN	NO	495050.98N 0183422.21E	---	---	---	FL120-	---	RNAV 1	---
TF	MT805	NO	494336.42N 0180936.81E	240 (245.84)	17.6	---	---	---	RNAV 1	---
TF	MT807	NO	494756.37N 0180313.58E	310 (316.36)	6.0	RIGHT	---	---	RNAV1	---
TF	BOGTU	NO	495204.59N 0180955.48E	040 (046.28)	6.0	RIGHT	---	---	RNAV 1	IAF
UPLAV1U (UPLAV ONE UNIFORM ARRIVAL)			UPLAV - MT716 - MT715 - EKMIT					---		
IF	UPLAV	NO	491922.27N 0173142.23E	---	---	---	---	---	RNAV 1	---
TF	MT716	NO	492819.92N 0175822.29E	057 (062.59)	19.6	---	---	---	RNAV 1	---
TF	MT715	NO	493652.54N 0181206.62E	040 (046.21)	12.4	LEFT	---	---	RNAV 1	---
TF	EKMIT	NO	494323.64N 0182240.63E	040 (046.38)	9.5	---	---	---	RNAV 1	IAF

RNAV HOLDING

Holding point	Inbound MAG° (True°)	Outbound MAG° (True°)	Turn Direction	MAX IAS kt	Min.holding altitude FT MSL / FL	Time	Distance NM	Remarks
BOGTU	040 (046.28)	220 (226.28)	LEFT	---	A3400	1 MIN	---	---
EKMIT	040 (046.39)	220 (226.39)	RIGHT	---	A5200	1 MIN	---	---
OTA	040 (046.30)	220 (226.30)	LEFT	---	A4000	1 MIN	---	---