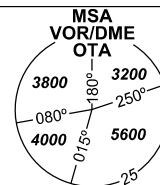


INSTRUMENT APPROACH CHART - ICAO

AERODROME ELEV **842**
THR RWY 22 ELEV **808**

PRAHA RADAR 119,375
121,500
MOŠNOV TOWER 120,805
121,500

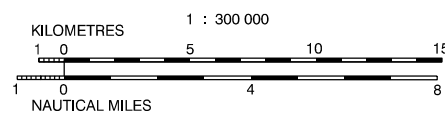
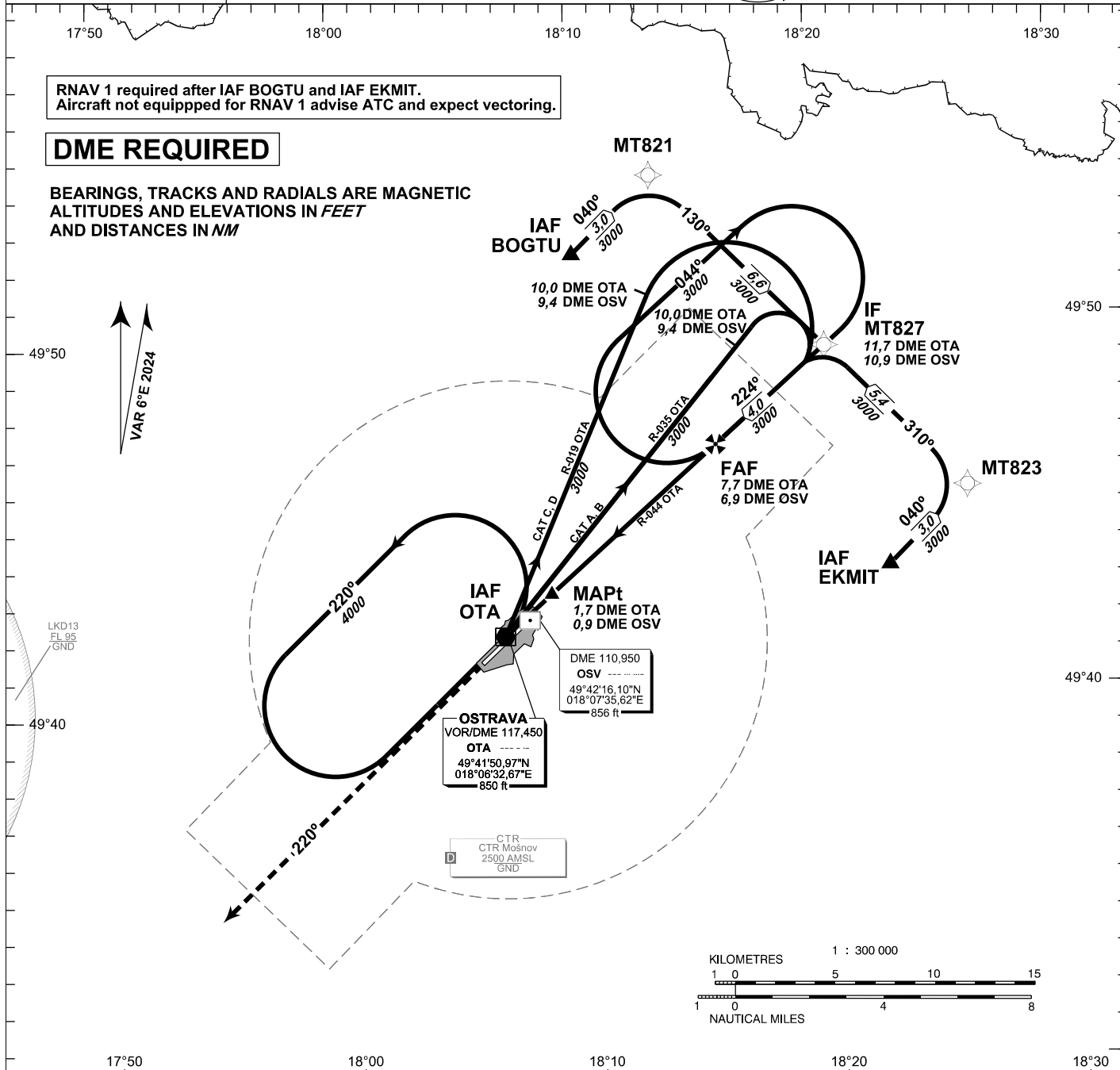


OSTRAVA/Mošnov VOR RWY 22

RNAV 1 required after IAF BOGTU and IAF EKMIT.
Aircraft not equipped for RNAV 1 advise ATC and expect vectoring.

DME REQUIRED

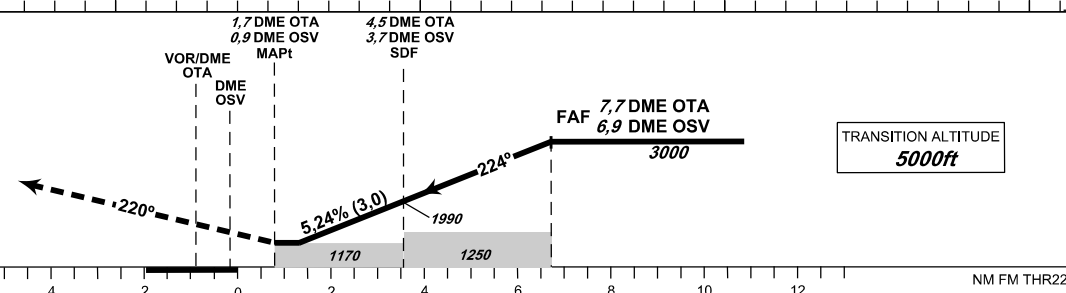
BEARINGS, TRACKS AND RADIALS ARE MAGNETIC
ALTITUDES AND ELEVATIONS IN FEET
AND DISTANCES IN NM



MISSED APPROACH:

Climb on track 220° to 4000 ft AMSL
expect vectoring
In case of RFC climb on track 220°
to 8,0 NM DME OTA and
turn right to VOR/DME OTA
in climbing to 4000 ft AMSL

THR 494225.64N, 0180742.39E
ELEV 808



TRANSITION ALTITUDE
5000ft

OCA/OCH		A	B	C	D
Straight-in Approach	ft	1170/370			
Circling	ft	1400/560	1440/600	1690/850	2100/1260

DME OTA NM	7	6	5	4	3	2
DME OSV NM	6,2	5,2	4,2	3,2	2,2	1,2
DIST THR NM	6,0	5,0	4,0	3,0	2,0	1,0
ALTITUDES ft	2780	2470	2150	1830	1510	1190

FAF - MAPt	6,0 NM	ft	80	100	120	140	160	180
min:sec			4:29	3:35	2:59	2:34	2:14	1:59
Rate of descent (5,24%)		ft/min	420	330	640	750	850	960

change: VAR, chart revision

Timing is not authorized for defining the MAPt.

INITIAL APPROACH VOR RWY 22

Recommended coding:

Path Terminator	Waypoint				Cours / Track MAG° (True°)	DIST NM	Turn Direction	Constraints		Nav Spec.	Remarks
	ID	Type	Flyover	Coordinates				Level	Speed		
via BOGTU											
IF	BOGTU	IAF	NO	495204.59N 0180955.48E	---	---	---	A3000+	---	RNAV 1	---
TF	MT821	---	NO	495408.55N 0181316.88E	040 (046.37)	3.0	---	---	---	RNAV 1	---
TF	MT827	IF	NO	494921.95N 0182018.26E	130 (136.41)	6.6	RIGHT	---	---	RNAV 1	---
via EKMIT											
IF	EKMIT	IAF	NO	494323.64N 0182240.63E	---	---	---	A3000+	---	RNAV 1	---
TF	MT823	---	NO	494527.22N 0182601.91E	040 (046.53)	3.0	---	---	---	RNAV 1	---
TF	MT827	IF	NO	494921.95N 0182018.26E	310 (316.57)	5.4	LEFT	---	---	RNAV 1	---

APPROACH VOR RWY 22

Descent angle (°)	3.00			
Type	IF	FAF	SDF	MAPt
Fix	MT827 (11.7 DME OTA) (10.9 DME OSV)	(7.7 DME OTA) (6.9 DME OSV)	(4.5 DME OTA) (3.7 DME OSV)	(1.7 DME OTA) (0.9 DME OSV)
Fix coordinates	494921.95N 0182018.26E	494647.83N 0181535.28E	494445.06N 0181150.49E	494256.92N 0180832.95E
Fix formation bearing (True°)	049.77 OTA	049.77 OTA	049.77 OTA	049.77 OTA
Fix formation distances (NM)	11.67 DME OTA 10.88 DME OSV	7.68 DME OTA 6.89 DME OSV	4.50 DME OTA 3.71 DME OSV	1.70 DME OTA 0.92 DME OSV

