

# INSTRUMENT APPROACH CHART - ICAO

AERODROME ELEV 778  
THR RWY 27 ELEV 771

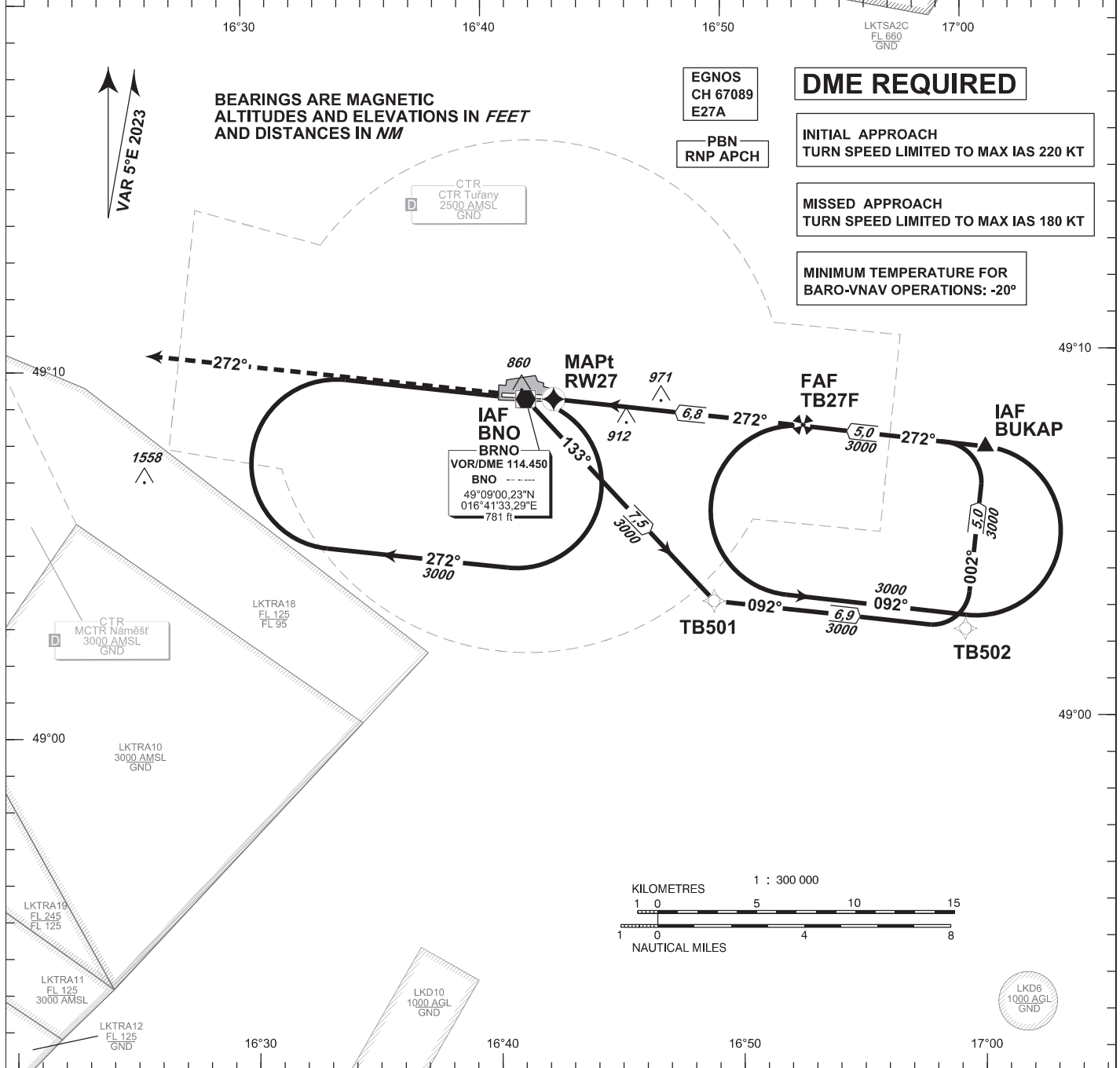
TUŘANY/TOWER 119,605  
125,430  
121,500

PRAHA RADAR 127,350  
121,500



**BRNO/Tuřany RNP**

**RWY 27**



BEARINGS ARE MAGNETIC  
ALTITUDES AND ELEVATIONS IN FEET  
AND DISTANCES IN NM

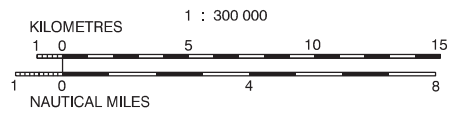
VAR 5°E 2023

**DME REQUIRED**

INITIAL APPROACH  
TURN SPEED LIMITED TO MAX IAS 220 KT

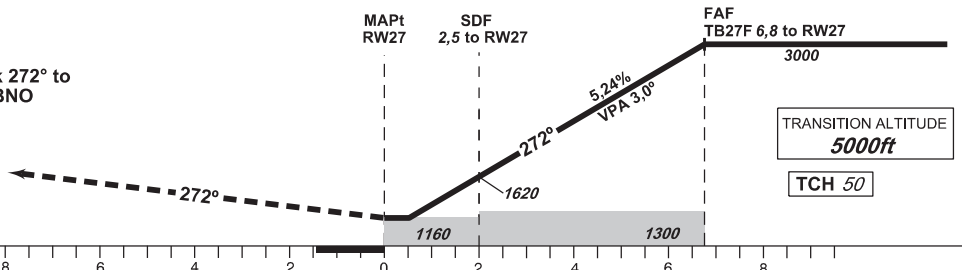
MISSED APPROACH  
TURN SPEED LIMITED TO MAX IAS 180 KT

MINIMUM TEMPERATURE FOR  
BARO-VNAV OPERATIONS: -20°



**MISSED APPROACH:**

Climb on track 272° to 4000 ft AMSL, expect vectoring. In case of RCF climb on track 272° to 8,0 NM DME BNO and turn right to VOR/DME BNO in climbing to 4000 ft AMSL.



THR 490859.12N 0164242.82E  
ELEV 771

NM FM THR27		12	10	8	6	4	2	0	2	4	6	8		
OCA/OCH		A				B				C				D
LNAV	ft					1160/390								
LNAV/VNAV	ft					1053/282								
LPV	ft					971/200								
Circling (South of AD Only)	ft	1210 / -	1440 / -	1560 / -	1740 / -									

DIST THR NM	6	5	4	3	2	1
ALTITUDES ft	2730	2410	2090	1780	1460	1140

FAF - MAPt 6,8 NM	kt	80	100	120	140	160	180
min:sec		5:08	4:06	3:25	2:56	2:34	2:17
Rate of descent	ft/min	420	530	640	740	850	960

change: coordinates of THR RWY 27

Timing is not authorized for defining the MAPt.

## Posloupnost traťových bodů / Way point sequence

Od / From IAF BUKAP		
BUKAP	IF/IAF	fly-by
TB27F	FAF	fly-by
RW27	MAPt	fly-over

Od / From IAF VOR/DME BNO		
VOR/DME BNO	IAF	fly-by
TB501		fly-by
TB502		fly-by
BUKAP	IF	fly-by
TB27F	FAF	fly-by
RW27	MAPt	fly-over

Seznam traťových bodů / Way point list		
BUKAP	49 07 24,66 N	017 00 36,17 E
VOR/DME BNO	49 09 00,23 N	016 41 33,29 E
TB501	49 03 22,94 N	016 49 11,05 E
TB502	49 02 27,72 N	016 59 34,69 E
TB27F	49 08 04,91 N	016 53 02,78 E
RW27	49 08 59,12 N	016 42 42,82 E

## SBAS FAS Data Block

## Vstupní data / Input Data

Parametry / Parameters	Hodnoty / Values
Operation Type	0
SBAS Provider	1
Airport Identifier	LKTB
Runway	27
Runway Direction	0
Approach Performance Designator	0
Route Indicator	
Reference Path Data Selector	0
Reference Path Identifier	E27A
LTP/FTP Latitude	490859.1200N
LTP/FTP Longitude	0164242.8200E
LTP/FTP Ellipsoidal Height (metres)	279.2
FPAP Latitude	490910.6325N
Delta FPAP Latitude (seconds)	11.5125
FPAP Longitude	0164029.6355E
Delta FPAP Longitude (seconds)	-133.1845
Threshold Crossing Height	50
TCH Units Selector	0
Glidepath Angle (degrees)	3.00
Course Width (metres)	105.00
Length Offset (metres)	0
HAL (metres)	40.0
VAL (metres)	35.0

## Výstupní data / Output Data

Parametry / Parameters	Hodnoty / Values
Data Block	10 02 14 0B 0C 1B 00 00 01 37 32 05 E0 C0 17 15 08 06 2C 07 E8 1E F1 59 00 7F EF FB F4 01 2C 01 64 00 C8 AF 96 A4 04 08
Calculated CRC Value	96A40408

## Required Additional Data (not CRC wrapped)

These additional data are not required for CRC calculation, but they need to be provided to datahouses for procedure coding in ARINC 424 records.

Parametry / Parameters	Hodnoty / Values
ICAO Code	LK
LTP/FTP Orthometric Height (metres)	234.9

