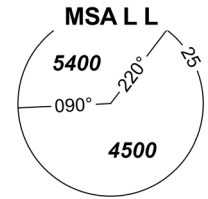


# OMNIDIRECTIONAL DEPARTURES CHART

# KARLOVY VARY

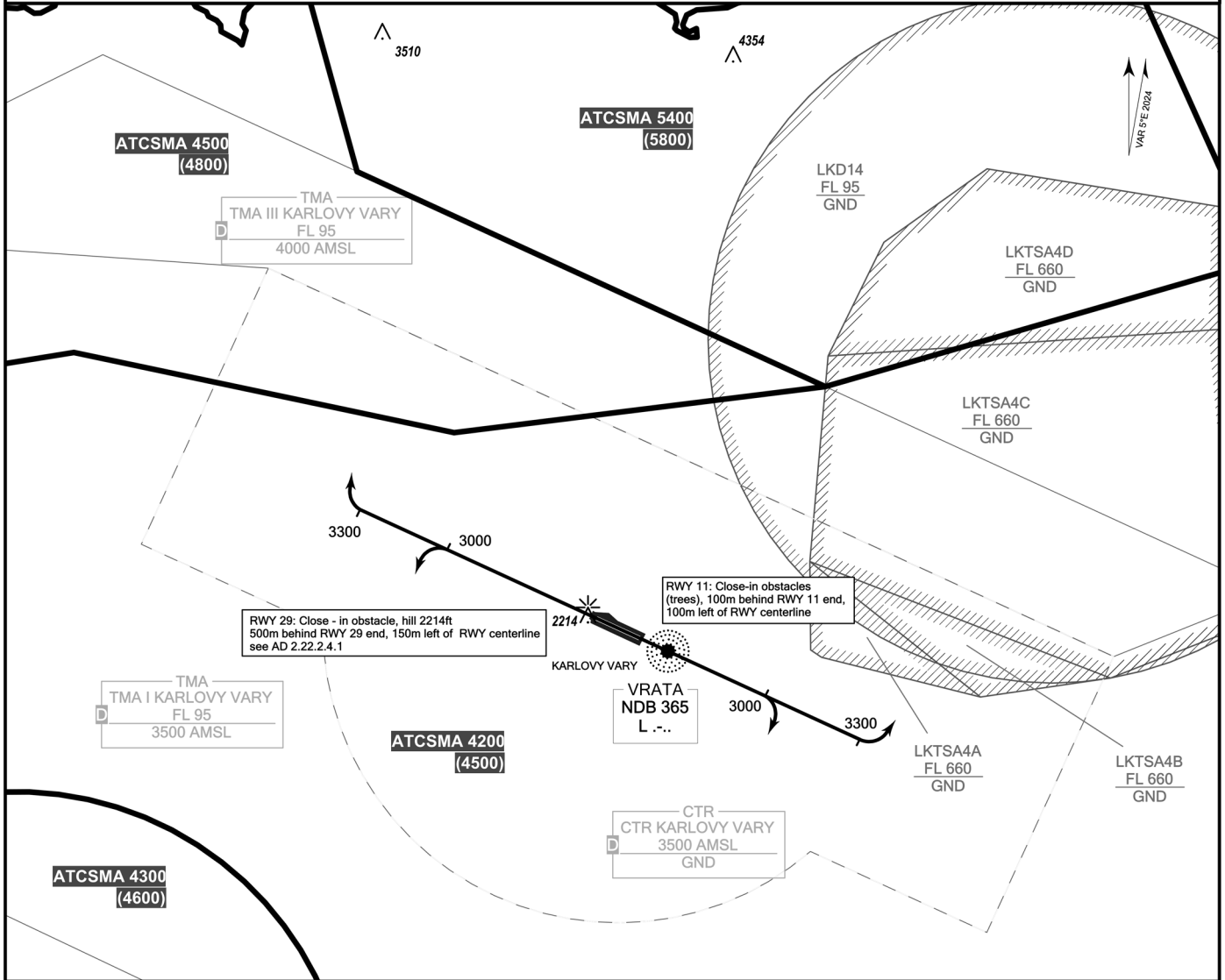
PRAHA RADAR	118.650
VARY TOWER	121.230
KARLOVY VARY ATIS	127.640
EMERGENCY FREQ	121.500

BEARINGS, TRACKS AND RADIALS ARE MAGNETIC  
ALTIMETERS AND ELEVATIONS ARE IN FEET  
DISTANCES ARE IN NM



TRANSITION ALTITUDE  
5000

AFTER DEPARTURE CONTACT  
PRAHA RADAR 118,650  
WHEN INSTRUCTED BY TOWER



change: VAR, ELEV for MNM ASC 5%, MSA, addition of " After departure contact PRAHA RADAR 118,650 when instructed by TWR"

Omnidirectional departures:

RWY 11: Climb straight ahead, minimum turn altitude is 3000ft  
No turns left to north of RWY centerline below 3300ft.

RWY 29: Climb straight ahead, minimum turn altitude is 3000ft.  
No turns right to north of RWY centerline below 3300ft.

MNM ASC 5% to 3300ft AMSL

