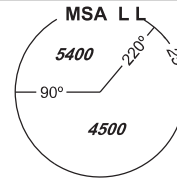


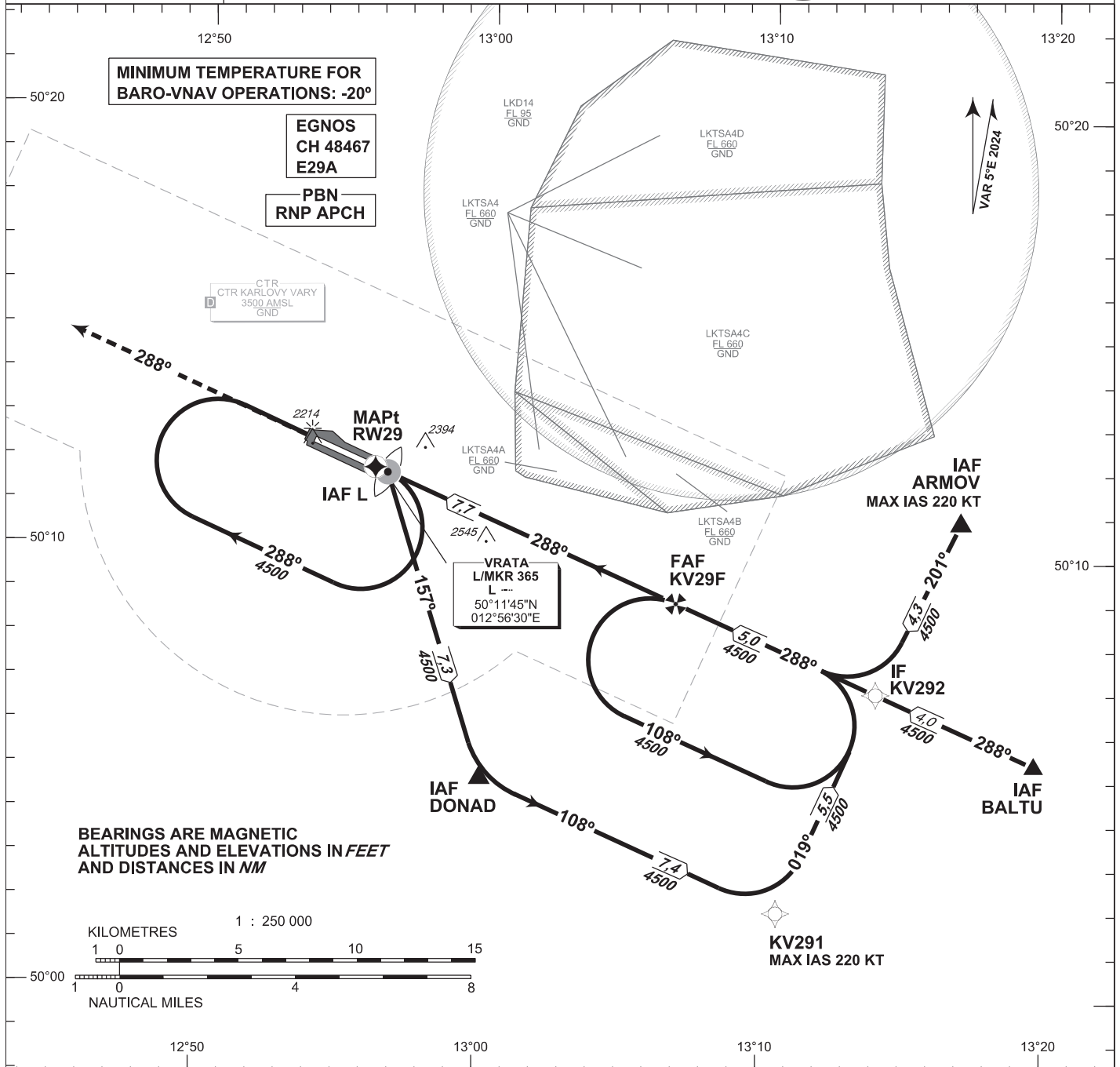
# INSTRUMENT APPROACH CHART - ICAO

AERODROME ELEV **1989**  
THR RWY 29 ELEV **1985**

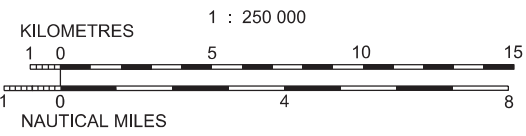
PRAHA RADAR 118,650  
VARY TOWER 121,230  
121,500



# KARLOVY VARY RNP RWY 29

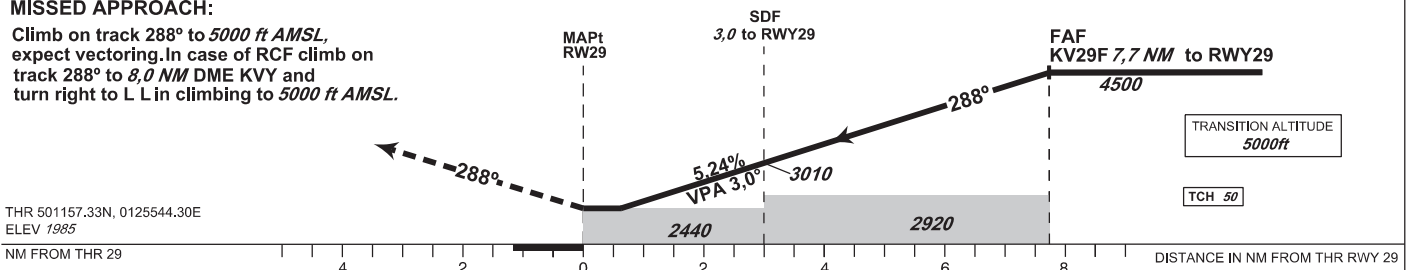


BEARINGS ARE MAGNETIC  
ALTITUDES AND ELEVATIONS IN FEET  
AND DISTANCES IN NM



### MISSED APPROACH:

Climb on track 288° to 5000 ft AMSL, expect vectoring. In case of RCF climb on track 288° to 8,0 NM DME KVV and turn right to L L in climbing to 5000 ft AMSL.



THR 501157.33N, 0125544.30E  
ELEV 1985

NM FROM THR 29 4 2 0 2 4 6 8 DISTANCE IN NM FROM THR RWY 29

OCA/OCH		A	B	C	D
LNAV	ft	2440/450			
LNAV / VNAV	ft	2419/434			
LPV CAT I	ft	2194/210	2206/221	2214/229	2225/240
Circling (south of AD only)	ft	2520/530	2520/530	2970/980	3160/1170

DIST THR (MAPt)	7	6	5	4	3	2	1
ALTITUDES ft	4260	3940	3630	3310	2990	2670	2350
FAF - MAPt 7,7 NM	kt	80	100	120	140	160	180
Rate of descent (5,24%)	min:sec	5:48	4:39	3:52	3:19	2:54	2:35
	ft/min	420	530	640	740	850	960

change: VAR, MAG tracks, designations

Timing is not authorized for defining the MAPt.

## APPROACH RNP RWY 29

Recommended coding:

Path Terminator	Waypoint				Cours / Track MAG° (True°)	DIST NM	Turn Direction	Constraints		Nav Spec.	Remarks
	ID	Type	Flyover	Coordinates				Level	Speed		
via <b>ARMOV</b>											
IF	ARMOV	IAF	NO	501050.76N 0131650.52E	---	---	---	A4500+	K220-	RNP APCH	---
TF	KV292	IF	NO	500656.23N 0131356.91E	201 (205.46)	4.3	---	---	---	RNP APCH	---
TF	KV29F	FAF	NO	500854.77N 0130648.58E	288 (293.34)	5.0	RIGHT	A4500+	---	RNP APCH	---
TF	RW29	MAPT	YES	501157.33N 0125544.30E	288 (293.34)	7.7	---	---	---	RNP APCH	---
CA	---	---	---	---	288 (293.34)	20.2	---	A5000+	---	RNP APCH	---
via <b>BALTU</b>											
IF	BALTU	IAF	NO	500522.06N 0131935.48E	---	---	---	A4500+	---	RNP APCH	---
TF	KV292	IF	NO	500656.23N 0131356.91E	288 (293.42)	4.0	---	---	---	RNP APCH	---
TF	KV29F	FAF	NO	500854.77N 0130648.58E	288 (293.34)	5.0	---	A4500+	---	RNP APCH	---
TF	RW29	MAPT	YES	501157.33N 0125544.30E	288 (293.34)	7.7	---	---	---	RNP APCH	---
CA	---	---	---	---	288 (293.34)	20.2	---	A5000+	---	RNP APCH	---
via <b>DONAD</b>											
IF	DONAD	IAF	NO	500450.93N 0130000.00E	---	---	---	A4500+	---	RNP APCH	---
TF	KV291	---	NO	500155.29N 0131035.25E	108 (113.17)	7.4	---	---	K220-	RNP APCH	---
TF	KV292	IF	NO	500656.23N 0131356.91E	019 (023.31)	5.5	LEFT	---	---	RNP APCH	---
TF	KV29F	FAF	NO	500854.77N 0130648.58E	288 (293.34)	5.0	LEFT	A4500+	---	RNP APCH	---
TF	RW29	MAPT	YES	501157.33N 0125544.30E	288 (293.34)	7.7	---	---	---	RNP APCH	---
CA	---	---	---	---	288 (293.34)	20.2	---	A5000+	---	RNP APCH	---
via <b>L L</b>											
IF	L L	IAF	NO	501144.84N 0125630.07E	---	---	---	A4500+	---	RNP APCH	---
TF	DONAD	---	NO	500450.93N 0130000.00E	157 (161.92)	7.3	---	---	---	RNP APCH	---
TF	KV291	---	NO	500155.29N 0131035.25E	108 (113.17)	7.4	LEFT	---	K220-	RNP APCH	---
TF	KV292	IF	NO	500656.23N 0131356.91E	019 (023.31)	5.5	LEFT	---	---	RNP APCH	---
TF	KV29F	FAF	NO	500854.77N 0130648.58E	288 (293.34)	5.0	LEFT	A4500+	---	RNP APCH	---
TF	RW29	MAPT	YES	501157.33N 0125544.30E	288 (293.34)	7.7	---	---	---	RNP APCH	---
CA	---	---	---	---	288 (293.34)	20.2	---	A5000+	---	RNP APCH	---

## RNAV HOLDING

Holding point	Inbound MAG° (True°)	Outbound MAG° (True°)	Turn Direction	MAX IAS kt	Min. holding altitude FT MSL / FL	Time	Distance NM	Remarks
L L	108 (113.00)	288 (293.00)	RIGHT	---	A4500	1 MIN	---	---
KV29F	288 (293.00)	108 (113.00)	LEFT	---	A4500	1 MIN	---	---

## SBAS FAS Data Block

## Input Data

Operation Type	0
SBAS Provider	1 (EGNOS)
Airport Identifier	LKKV
Runway	29
Runway Letter	0 (None)
Approach Performance Designator	0
Route Indicator	
Reference Path Data Selector	0
Reference Path Identifier	E29A
LTP/FTP Latitude	501157.3265N
LTP/FTP Longitude	0125544.3045E
LTP/FTP Ellipsoidal Height (metres)	651.4
FPAP Latitude	501222.8495N
Delta FPAP Latitude (seconds)	25.5230
FPAP Longitude	0125411.0595E
Delta FPAP Longitude (seconds)	-93.2450
Threshold Crossing Height	50.0
TCH Units Selector	0 (feet)
Glidepath Angle (degrees)	3.00
Course Width (metres)	105.00
Length Offset (metres)	0
HAL (metres)	40.0
VAL (metres)	35.0

## Output Data

Data Block	10 16 0B 0B 0C 1D 00 00 01 39 32 05 1D 0E 8B 15 61 6B 8C 05 72 2D 66 C7 00 86 27 FD F4 01 2C 01 64 00 C8 AF 02 0F F9 16
Calculated CRC Value	020FF916

## Required Additional Data

ICAO Code	LK
LTP/FTP Orthometric Height (metres)	605.0

