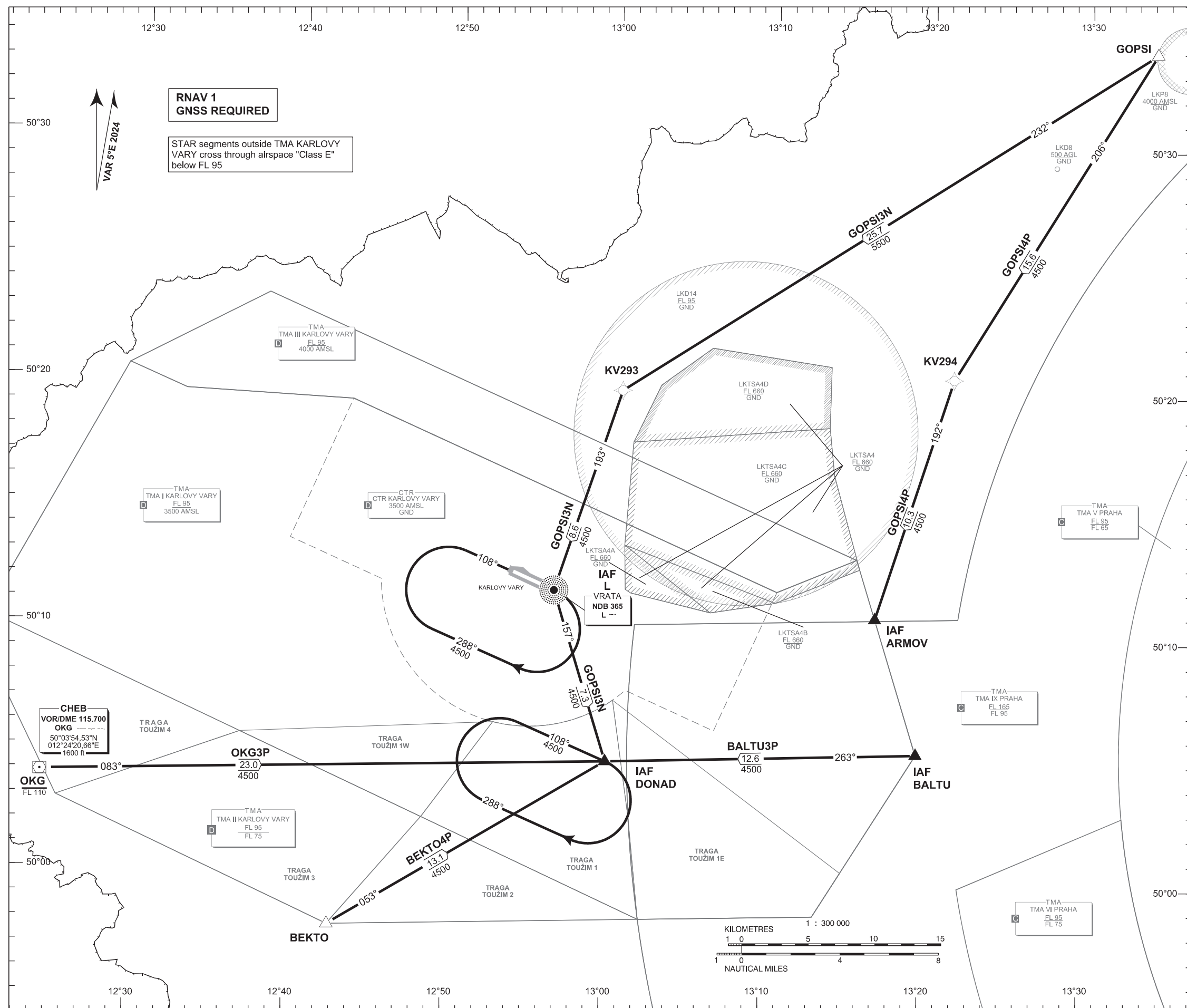


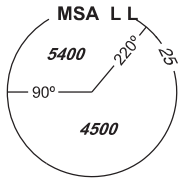
# STANDARD ARRIVAL CHART- INSTRUMENT (STAR) - ICAO

# KARLOVY VARY RNAV RWY 29

BALTU3P BEKTO4P GOPSI3N GOPSI4P OKG3P

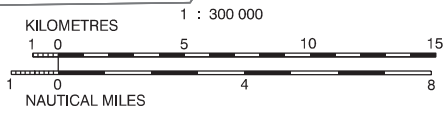


PRAHA RADAR	118.650
VARY TOWER	121.230
KARLOVY VARY ATIS	127.640
EMERGENCY FREQ	121.500



BEARINGS, TRACKS AND RADIALS ARE MAGNETIC  
ALTITUDES AND ELEVATIONS ARE IN FEET  
DISTANCES ARE IN NM

TRANSITION ALTITUDE  
5000 FT



CHANGE : VAR, MAG tracks, designations

Recommended coding:

Designator			Route					Remarks		
Path Terminator	Waypoint			Cours / Track MAG° (True°)	DIST NM	Turn Direction	Constraints		Nav Spec.	Remarks
	ID	Flyover	Coordinates				Crossing ALT	Speed		
<b>BALTU3P</b> (BALTU THREE PAPA ARRIVAL)			BALTU - DONAD					---		
IF	BALTU	NO	500522.06N 0131935.48E	---	---	---	---	---	RNAV 1	---
TF	DONAD	NO	500450.93N 0130000.00E	263 (267.77)	12.6	---	---	---	RNAV 1	IAF
<b>BEKTO4P</b> (BEKTO FOUR PAPA ARRIVAL)			BEKTO - DONAD					---		
IF	BEKTO	NO	495756.96N 0124243.36E	---	---	---	---	---	RNAV 1	---
TF	DONAD	NO	500450.93N 0130000.00E	053 (058.10)	13.1	---	---	---	RNAV 1	IAF
<b>GOPSI3N</b> (GOPSI THREE NOVEMBER ARRIVAL)			GOPSI - KV293 - L L - DONAD					---		
IF	GOPSI	NO	503358.70N 0133408.62E	---	---	---	---	---	RNAV 1	---
TF	KV293	NO	501955.70N 0130033.36E	232 (236.99)	25.7	---	---	---	RNAV 1	---
TF	L L	NO	501144.84N 0125630.07E	193 (197.65)	8.6	LEFT	---	---	RNAV 1	---
TF	DONAD	NO	500450.93N 0130000.00E	157 (161.92)	7.3	LEFT	---	---	RNAV 1	IAF
<b>GOPSI4P</b> (GOPSI FOUR PAPA ARRIVAL)			GOPSI - KV294 - ARMOV					---		
IF	GOPSI	NO	503358.70N 0133408.62E	---	---	---	---	---	RNAV 1	---
TF	KV294	NO	502037.67N 0132134.18E	206 (211.10)	15.6	---	---	---	RNAV 1	---
TF	ARMOV	NO	501050.76N 0131650.52E	192 (197.24)	10.3	LEFT	---	---	RNAV1	IAF
<b>OKG3P</b> (OKG THREE PAPA ARRIVAL)			OKG - DONAD					---		
IF	OKG	NO	500354.53N 0122420.66E	---	---	---	FL110-	---	RNAV 1	---
TF	DONAD	NO	500450.93N 0130000.00E	083 (087.43)	23.0	---	---	---	RNAV 1	IAF

**RNAV HOLDING**

Holding point	Inbound MAG° (True°)	Outbound MAG° (True°)	Turn Direction	MAX IAS kt	Min.holding altitude FT MSL / FL	Time	Distance NM	Remarks
L L	108 (113.00)	288 (293.00)	RIGHT	---	A4500	1 MIN	---	---
DONAD	108 (113.00)	288 (293.00)	RIGHT	---	A4500	1 MIN	---	---