

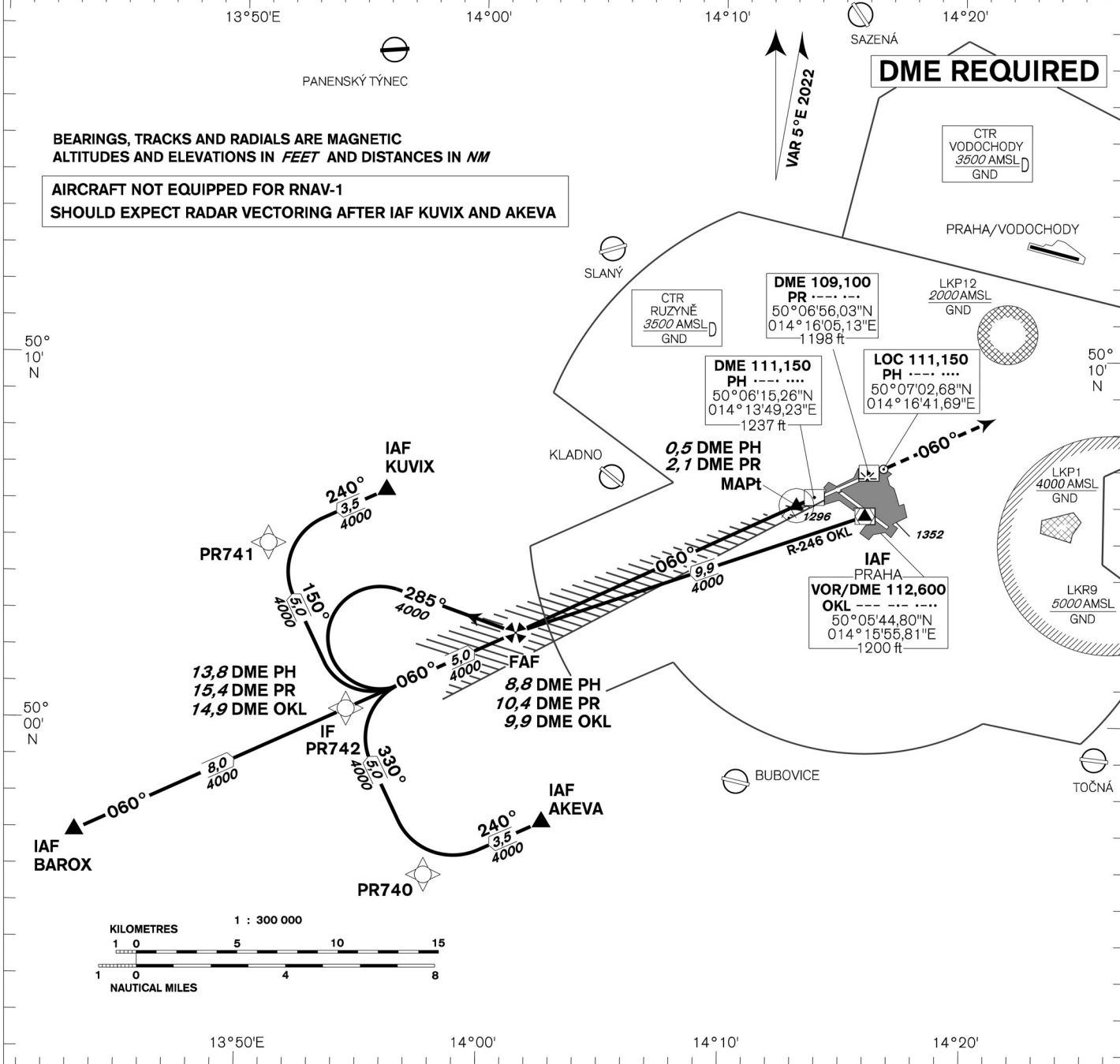
INSTRUMENT APPROACH CHART - ICAO

AERODROME ELEV 1234
THR RWY 06 ELEV 1202
OCH RELATED TO THR RWY 06

PRAHA RADAR 127,580
RUZYŇNĚ RADAR 119,010
SUPPLEMENTARY FREQ 136,080
121,500
134,560

RUZYŇNĚ TOWER
SUPPLEMENTARY FREQ 118,110
121,500

PRAHA/Ruzyňě ILS RWY 06



TRANSITION ALTITUDE 5000ft
ILS RDH 54,0

THR 500606,61N 0141334,68E
ELEV 1202

OCA/OCH	A	B	C	D	
Straight-in Approach	Cat I	ft 1353 / 150	1364 / 161	1378 / 175	1395 / 192
	LOC	ft 1550 / 340			
Circling	see the circling approach chart				

MISSED APPROACH:
Climb on track 060° to 4000ft, radar vectoring will be provided.
In case of RCF climb on track 060° to 4000ft, at 10NM DME OKL turn left to OKL and climb to 5000ft.

	9	8	7	6	5	4	3	2	1
DME PH NM	10,6	9,6	8,6	7,6	6,6	5,6	4,6	3,6	2,6
DME PR NM	10,6	9,6	8,6	7,6	6,6	5,6	4,6	3,6	2,6
DIST THR NM	8,8	7,8	6,8	5,8	4,8	3,8	2,8	1,8	0,8
ALTITUDES ft	4050	3730	3420	3100	2780	2460	2150	1820	1510

	kt	80	100	120	140	160	180
FAF - MAPt 8,3 NM	min:sec	6:15	5:00	4:10	3:34	3:07	2:46
Rate of descent (5,24%)	ft/min	430	530	640	740	850	960

Timing is not authorized for defining the MAPt.

change: horizontal and vertical limits of LKP1