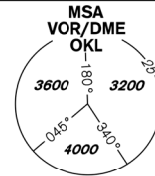


INSTRUMENT APPROACH CHART - ICAO

AERODROME ELEV **1234**
 THR RWY 24 ELEV **1158**
 OCH RELATED TO THR RWY 24

PRAHA RADAR 127,580
 RUZYŇ RADAR 119,010
 SUPPLEMENTARY FREQ 136,080
 121,500
 RUZYŇ TOWER 134,560
 SUPPLEMENTARY FREQ 118,110
 121,500



PRAHA/Ruzyně NDB
RWY 24

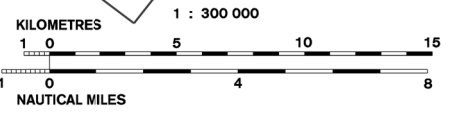
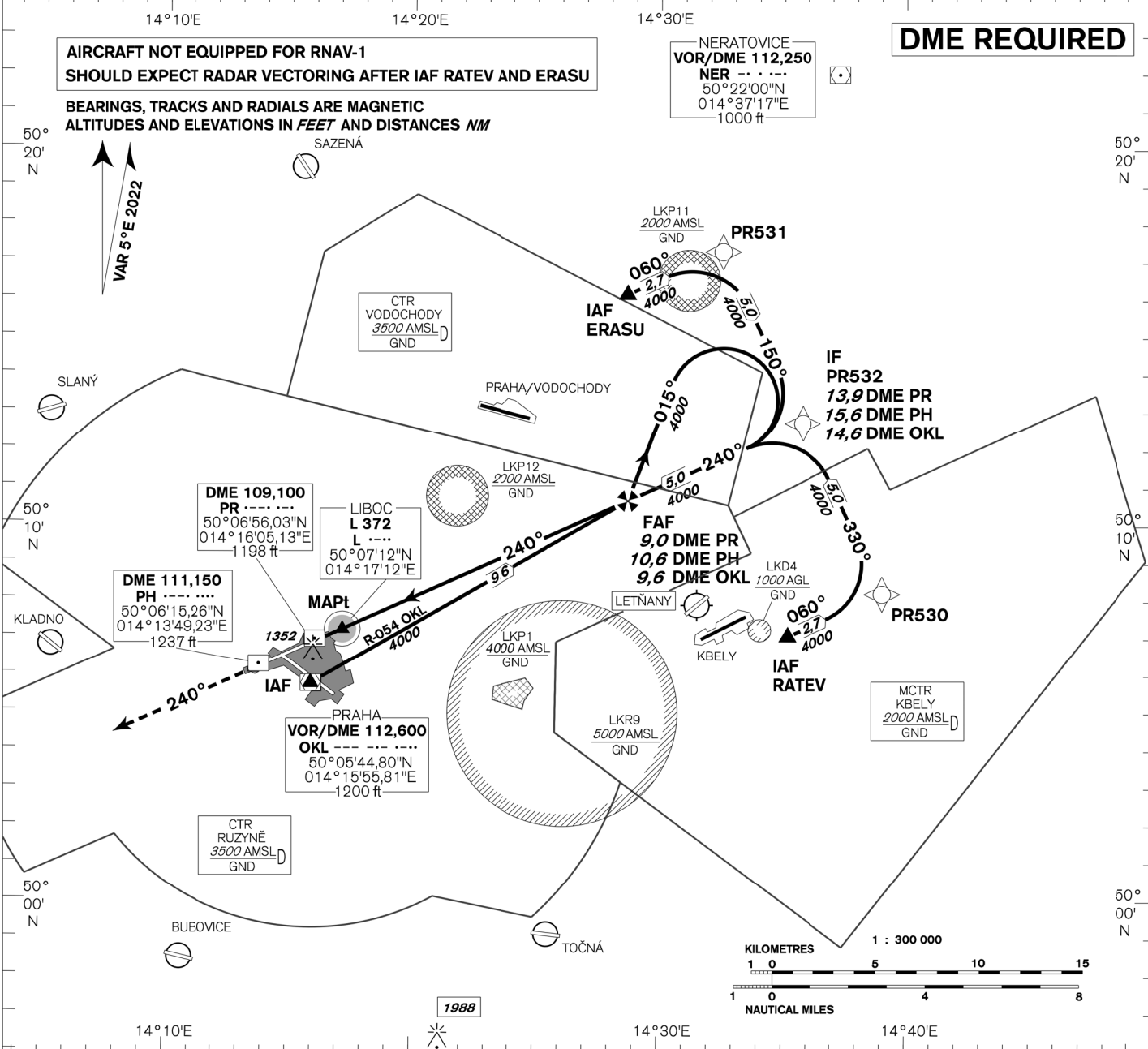
AIRCRAFT NOT EQUIPPED FOR RNAV-1 SHOULD EXPECT RADAR VECTURING AFTER IAF RATEV AND ERASU

BEARINGS, TRACKS AND RADIALS ARE MAGNETIC
 ALTITUDES AND ELEVATIONS IN FEET AND DISTANCES NM



DME REQUIRED

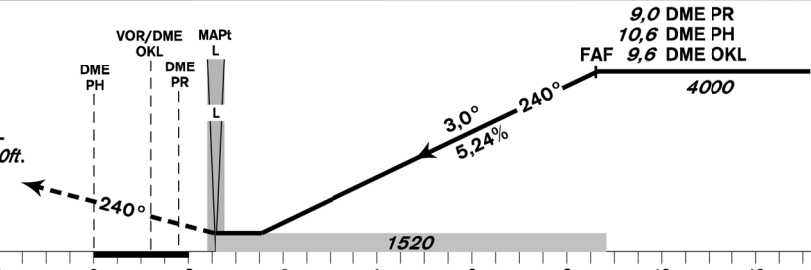
NERATOVICE VOR/DME 112,250
 NER ---
 50°22'00"N
 014°37'17"E
 1000 ft



MISSED APPROACH:

Climb on track 240° to 4000ft, radar vectoring will be provided.
 In case of RCF climb on track 240° to 4000ft, at 10NM DME OKL turn right to OKL and climb to 5000ft.

THR 500657.42N, 0141624.12E
 ELEV 1158



TRANSITION ALTITUDE
5000ft

OCA/OCH	A	B	C	D
Straight-in Approach	1520/360			
Circling	see the circling approach chart			

DME PR	NM	9	8	7	6	5	4	3	2	1
DME PH	NM	10,6	9,6	8,6	7,6	6,6	5,6	4,6	3,6	2,6
DME OKL	NM	9,6	8,6	7,7	6,7	5,7	4,7	3,7	2,8	1,9
DIST THR	NM	8,8	7,8	6,8	5,8	4,8	3,8	2,8	1,8	0,8
ALTITUDES	ft	4010	3690	3370	3060	2740	2420	2100	1780	1460
	kt	80	100	120	140	160	180			
FAF - MAPt 8,2 NM	min:sec	6:09	4:55	4:06	3:31	3:04	2:44			
Rate of descent (5,24%)	ft/min	420	530	640	740	850	960			

Timing is not authorized for defining the MAPt.

change: horizontal and vertical limits of LKP1