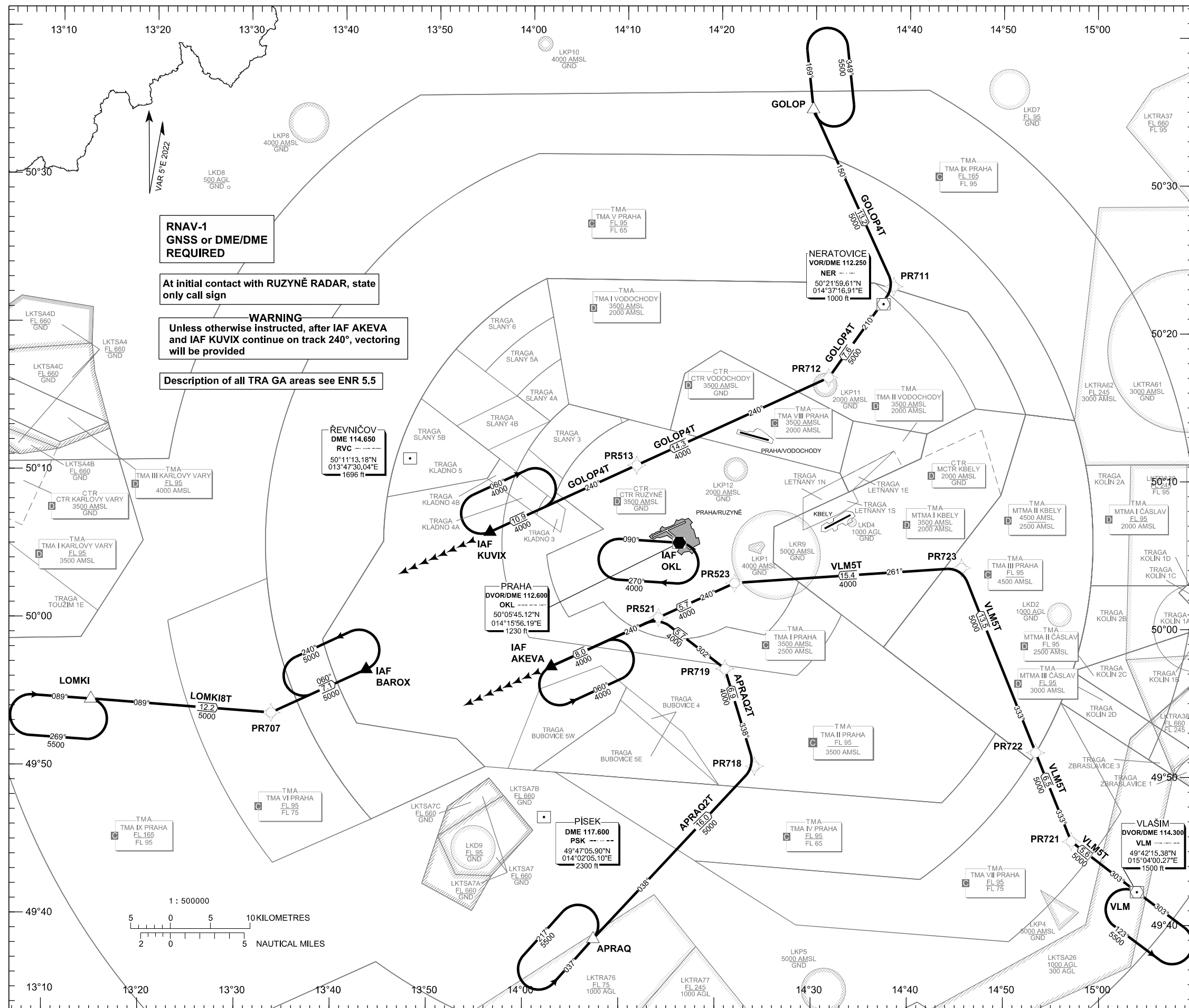


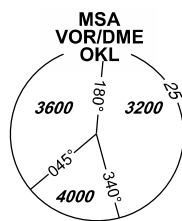
STANDARD ARRIVAL CHART- INSTRUMENT (STAR) - ICAO

PRAHA/RUZYŇĚ RNAV RWY 06

APRAQ2T GOLOP4T LOMKI8T VLM5T



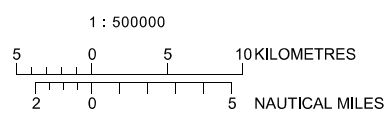
PRAHA RADAR	120.530
RUZYŇĚ RADAR	127.580
RUZYŇĚ RADAR	119.010
RUZYŇĚ RADAR	118.310
SUPPLEMENTARY FREQ APP	136.080
RUZYŇĚ DELIVERY	120.060
RUZYŇĚ TOWER	134.560
SUPPLEMENTARY FREQ TWR	118.110
RUZYŇĚ GROUND	121.910
RUZYŇĚ ATIS	122.160
EMERGENCY FREQ	121.500



BEARINGS, TRACKS AND RADIALS ARE MAGNETIC
ALTITUDES AND ELEVATIONS ARE IN FEET
DISTANCES ARE IN NM

TRANSITION ALTITUDE
5000 FT

Speed restriction see AIP AD 2.22.4.2.1



**RNAV-1
GNSS or DME/DME
REQUIRED**

At initial contact with RUZYŇĚ RADAR, state
only call sign

WARNING
Unless otherwise instructed, after IAF AKEVA
and IAF KUVIX continue on track 240°, vectoring
will be provided

Description of all TRA GA areas see ENR 5.5

ŘEVNIČOV
DME 114.650
RVC
50°11'13.18"N
013°47'30.04"E
1696 ft

PRAHA
DVOR/DME 112.600
OKL
50°05'45.12"N
014°15'56.19"E
1230 ft

PISEK
DME 117.600
PSK
49°47'05.90"N
014°02'05.10"E
2300 ft

VLAŠIM
DVOR/DME 114.300
VLM
49°42'15.38"N
015°04'00.27"E
1500 ft

change: horizontal and vertical limits of LKP1; removal of LKD14