

AD ELEV 778 ft / 237 m

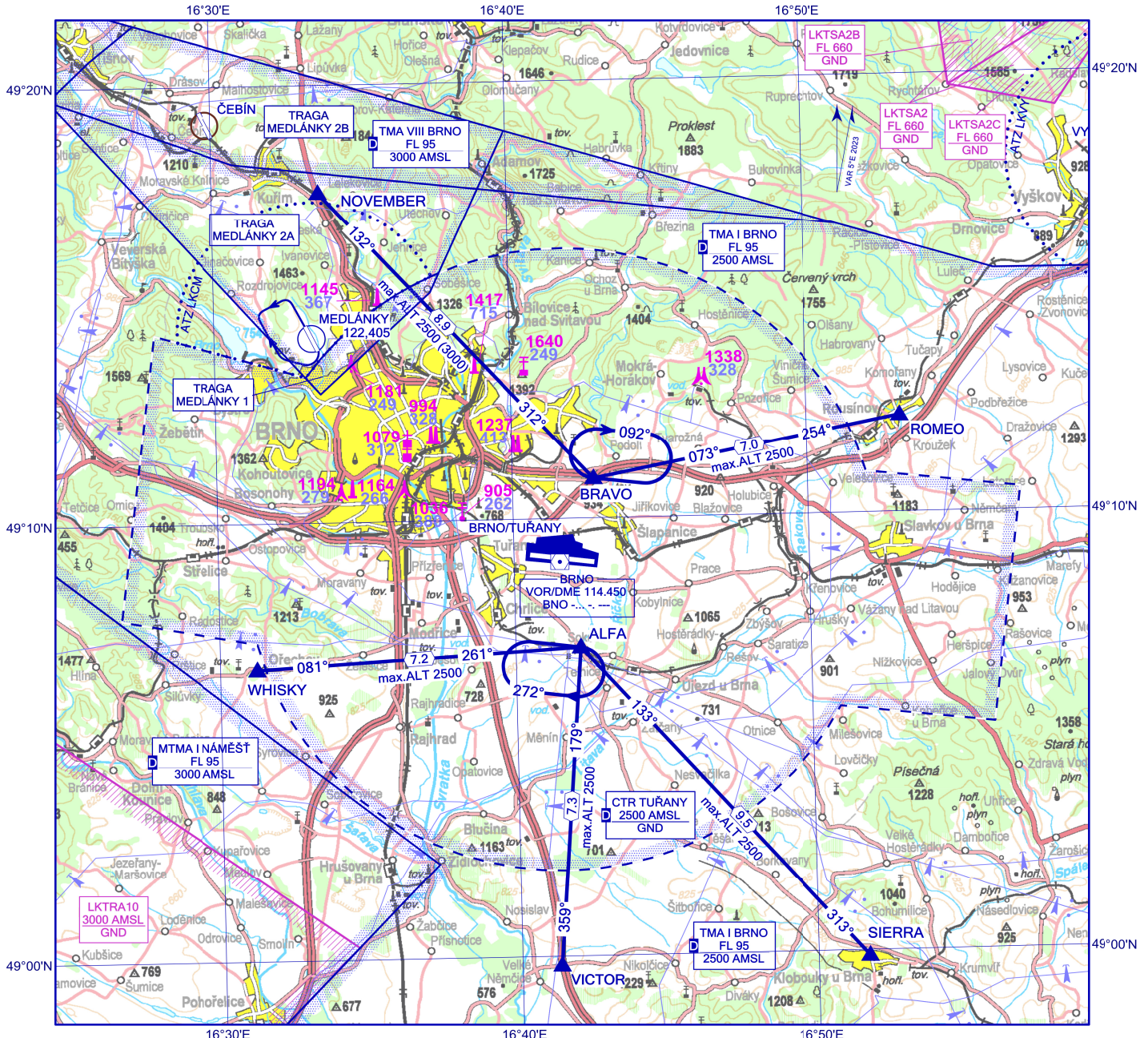
VFR Arrivals and Departures Chart

BRNO/TUŘANY

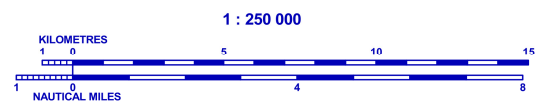
BEARINGS ARE MAGNETIC
ALT AND ELEV IN FEET
DISTANCES ARE IN NM

PRAHA RADAR	127.350
TUŘANY TOWER	119.605
TUŘANY GROUND	125.430
TUŘANY ATIS	131.105
EMERGENCY FREQ	121.500

ALTITUDES IN BRACKETS
ARE FOR NIGHT VFR FLIGHTS



ALFA	49 07 03 N	SIERRA	48 59 52 N
	016 42 12 E		016 51 44 E
BRAVO	49 10 54 N	WHISKY	49 06 39 N
	016 42 45 E		016 31 15 E
ROMEO	49 12 13 N	VICTOR	48 59 47 N
	016 53 10 E		016 41 20 E
NOVEMBER	49 17 32 N		
	016 33 37 E		



1502 Elevation of Top (AMSL) of obstacle
499 Height of Obstacle (AGL)

change: rename of Waypoints: ECHO to ROMEO and ZULU to VICTOR

Waypoint sequence

Arrivals

<i>Arrival</i>	<i>Waypoint sequence</i>
ROMEO 1	ROMEO - BRAVO
NOVEMBER 1	NOVEMBER - BRAVO
SIERRA 1	SIERRA - ALFA
VICTOR 1	VICTOR - ALFA
WHISKY 1	WHISKY - ALFA

Departures

<i>Departure</i>	<i>Waypoint sequence</i>
ROMEO 1	BRAVO - ROMEO
NOVEMBER 1	BRAVO - NOVEMBER
SIERRA 1	ALFA - SIERRA
VICTOR 1	ALFA - VICTOR
WHISKY 1	ALFA - WHISKY