

INSTRUMENT APPROACH CHART - ICAO

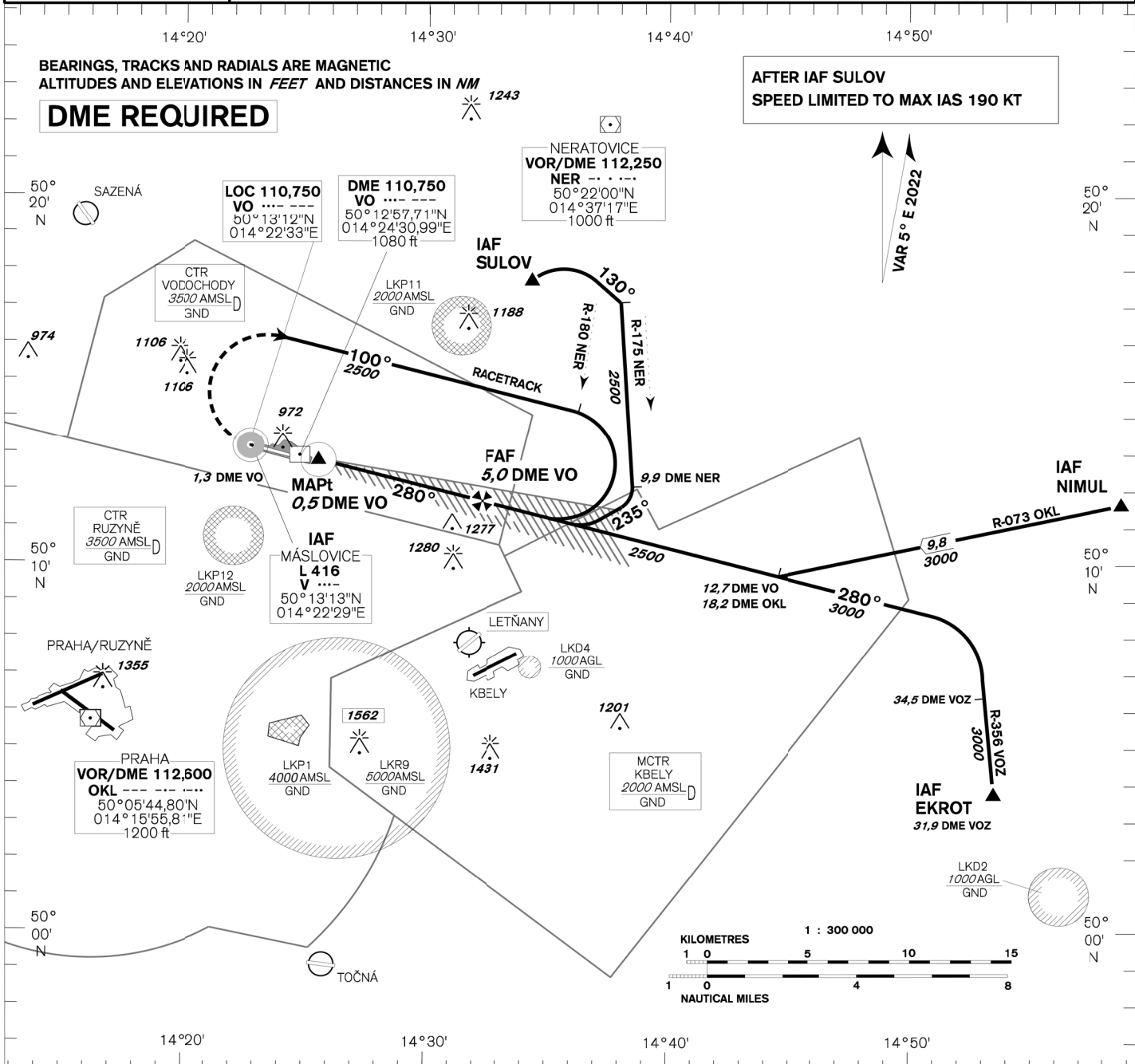
AERODROME ELEV 919
THR RWY 28 ELEV 915
OCH RELATED TO THR RWY 28

VODOCHODY RADAR 127,480
TOWER 133,080
121,500

PRAHA/VODOCHODY ILS Y

RWY 28

(ACFT CAT A,B)



MISSED APPROACH:
 Climb on track 280°, at L V: turn right and continue on racetrack in climbing to 2500ft AMSL.
 In case of RCF climb on track 280° to 2800ft AMSL, at 5,0 DME VO turn right to L V

TRANSITION ALTITUDE 5000ft

THR 501249,66N 0142444,88E
ELEV 915

NM FM THR28

OCA/OCH	A	B
Cat I	ft 1066/150	1078/163
LOC	ft 1280/360	
Circling (north of AD only)	ft 1330/410	1420/500

DME VO NM	5	4	3	2	1
DIST THR NM	4,8	3,8	2,8	1,8	0,8
ALTITUDES ft	2500	2180	1860	1540	1230

	kt	80	100	120	140	160	180
FAF - MAPt 4,5 NM	min:sec	3:23	2:42	2:15	1:56	1:41	1:30
Rate of descent 5,24%	ft/min	420	530	640	740	850	960

Timing is not authorized for defining the MAPt.

change: horizontal and vertical limits of LKP1