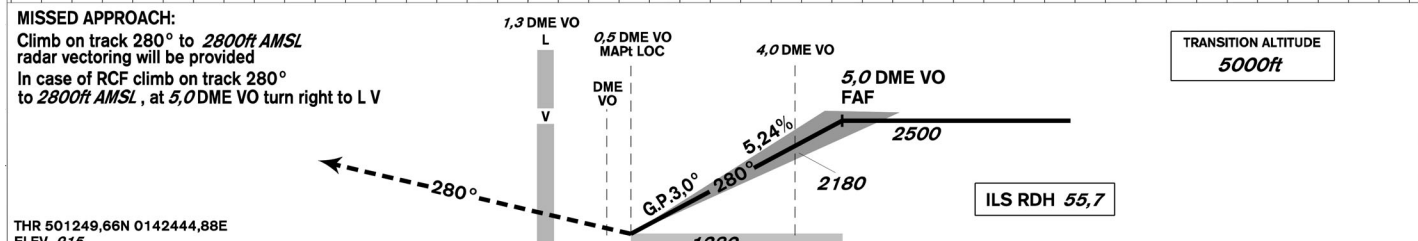
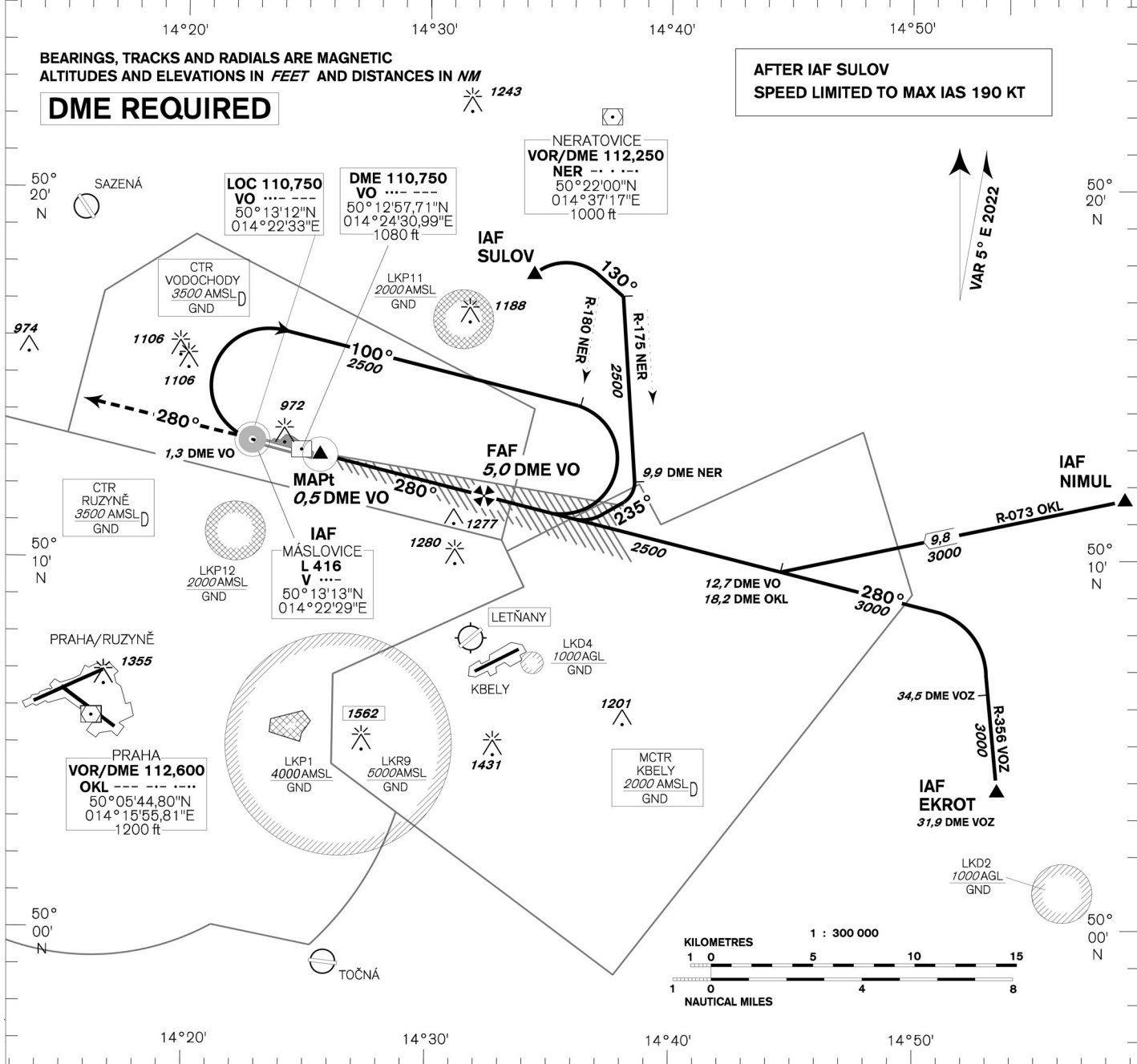


<h1 style="margin: 0;">INSTRUMENT APPROACH CHART - ICAO</h1>	<p>AERODROME ELEV <b>919</b> THR RWY 28 ELEV <b>915</b> OCH RELATED TO THR RWY 28</p>	<p>VODOCHODY RADAR <b>127,480</b>  TOWER <b>133,080</b> <b>121,500</b></p>	<div style="display: flex; justify-content: center; align-items: center;"> <div style="text-align: center;"> <p>MSA L V</p> </div> <div style="margin-left: 20px;"> <h2 style="margin: 0;">PRAHA/VODOCHODY ILS Z RWY 28 (ACFT CAT C)</h2> </div> </div>
--	---	--	---



THR 501249,66N 0142444,88E ELEV 915  
NM FM THR28

OCA/OCH		<b>C</b>					
Cat I	ft	1086/171					
LOC	ft	1280/360					
Circling (north of AD only)	ft	1520/600					

DME VO	NM	5	4	3	2	1
DIST THR	NM	4,8	3,8	2,8	1,8	0,8
ALTITUDES	ft	2500	2180	1860	1540	1230

FAF - MAPt 4,5 NM	min:sec	3:23	2:42	2:15	1:56	1:41	1:30
Rate of descent 5,24%	ft/min	420	530	640	740	850	960

change: horizontal and vertical limits of LKP1