

# INSTRUMENT APPROACH CHART - ICAO

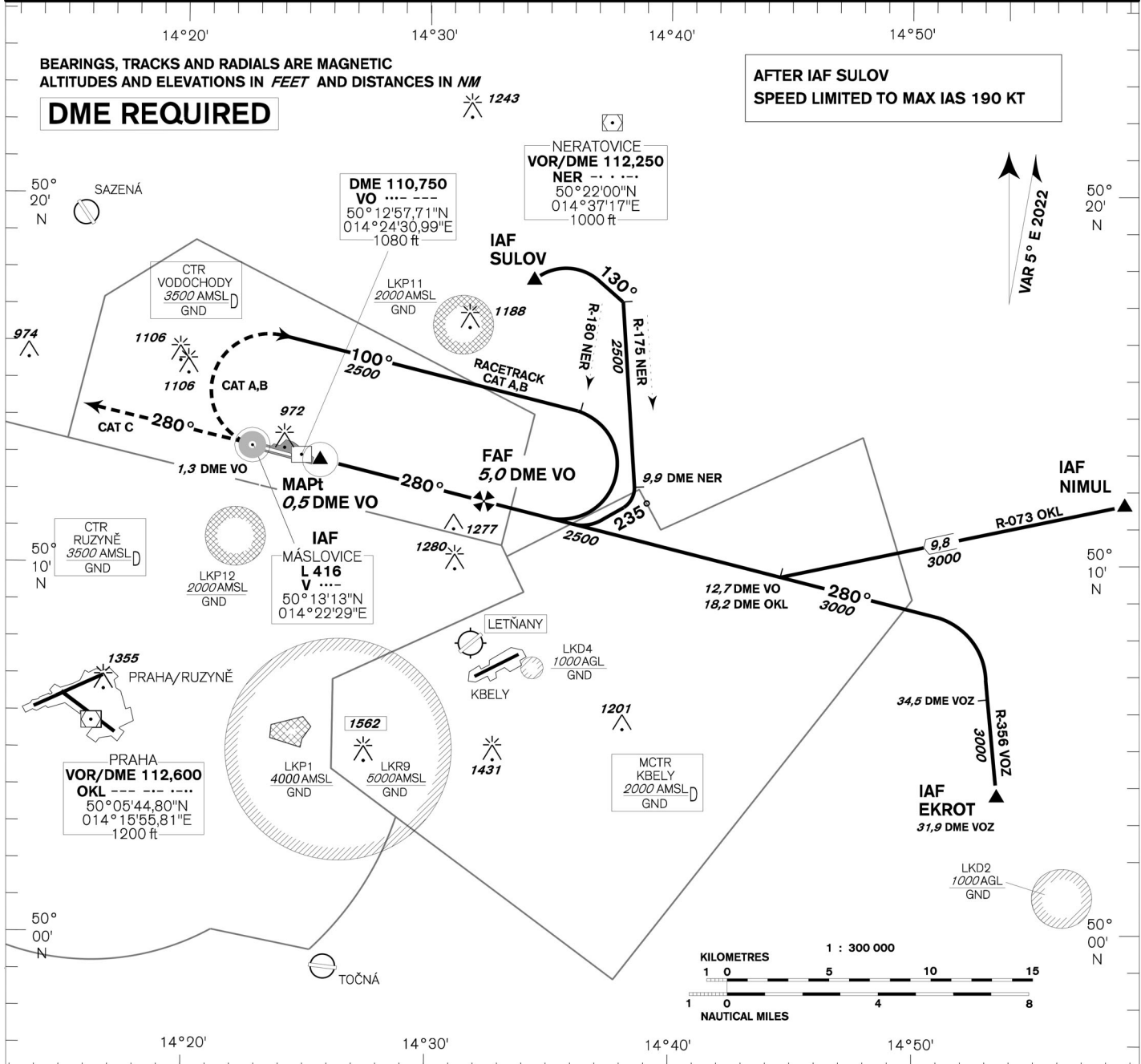
**AERODROME ELEV 919**  
**THR RWY 28 ELEV 915**  
**OCH RELATED TO THR RWY 28**

**VODOCHODY RADAR 127,480**  
**TOWER 133,080**  
**121,500**

## PRAHA/VODOCHODY NDB

### RWY 28

**(ACFT CAT A,B,C)**



**MISSED APPROACH:**  
 CAT A,B: Climb on track 280°, at L V turn right and continue on racetrack in climbing to 2800ft AMSL.  
 CAT C: Climb on track 280° to 2800ft AMSL, radar vectoring will be provided  
 CAT A,B,C: In case of RCF climb on track 280° to 2800ft AMSL, at 5,0 DME VO turn right to L V

TRANSITION ALTITUDE  
**5000ft**

THR 501249,66N 0142444,88E  
 ELEV 915  
 NM FM THR28

OCA/OCH		A	B	C
Straight in approach	ft	1280/360		
Circling (north of AD only)	ft	1330/410	1420/500	1520/600

DME VO NM	5	4	3	2	1
DIST THR NM	4,8	3,8	2,8	1,8	0,8
ALTITUDES ft	2500	2180	1860	1540	1230

	kt	80	100	120	140	160	180
FAF - MAPt 4,5 NM	min:sec	3:23	2:42	2:15	1:56	1:41	1:30
Rate of descent 5,24%	ft/min	420	530	640	740	850	960

change: horizontal and vertical limits of LKP1