

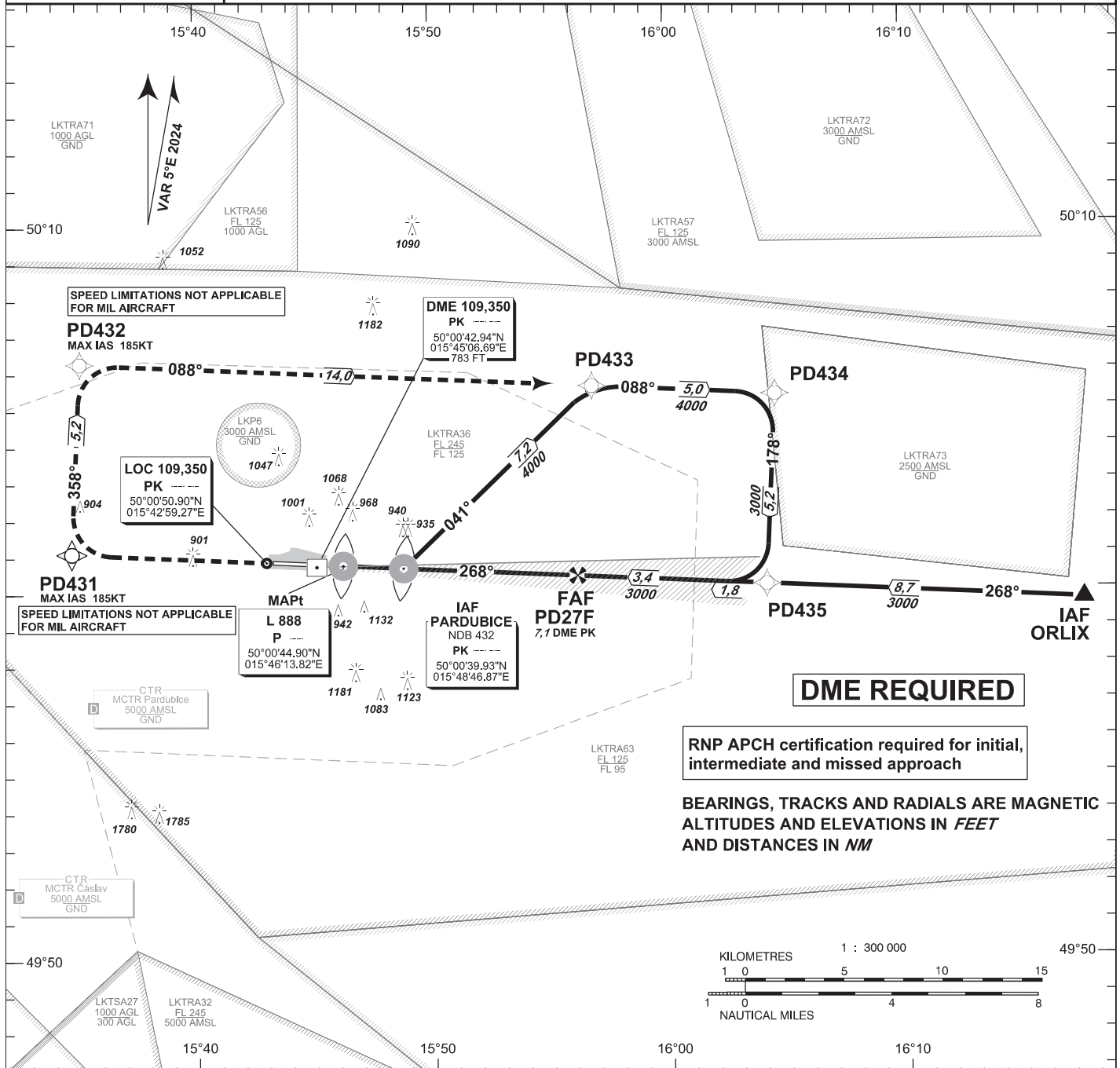
INSTRUMENT APPROACH CHART - ICAO

AERODROME ELEV 741
THR RWY 27 ELEV 731
OCH RELATED TO THR RWY 27

PARDUBICE	
RADAR	128,365 267,300 O/R
PRECISION	296,825 O/R 123,300 O/R reserve
TOWER	120,155 120,205 reserve

**MSA
NDB PK**

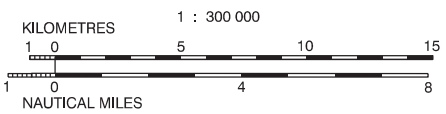
PARDUBICE
ILS Y
RWY 27



DME REQUIRED

RNP APCH certification required for initial, intermediate and missed approach

BEARINGS, TRACKS AND RADIALS ARE MAGNETIC
ALTITUDES AND ELEVATIONS IN FEET
AND DISTANCES IN NM



MISSED APPROACH:
Climb straight ahead to PD431, turn right to PD432, turn right to PD433 and join Initial approach via PD434. Climb to 4000ft.

MA turn: MAX IAS limited to 185 kt
SPEED LIMITATIONS NOT APPLICABLE FOR MIL AIRCRAFT

THR 500046.50N, 0154521.56E
ELEV 731

OCA/OCH			A	B	C	D					
Straight-in	CAT I	ft	889 / 168	912 / 181	920 / 189	930 / 199					
Approach	LOC	ft	1070 / 340								
Circling South of AD Only!		ft	1240 / 510	1430 / 700	1580 / 850	1730 / 1010					

DME PK NM	7	6	5	4	3	2	1
ALTITUDES ft	2960	2640	2330	2010	1690	1370	1050

FAF - MAPt 6,4 NM		kt	80	100	120	140	160	180
		min:sec	4:46	3:46	3:12	2:45	2:24	2:08
		ft/min	430	540	650	750	860	970

change: VAR; MAG tracks Timing is not authorized for defining the MAPt.

Seznam traťových bodů / Way point list		
PD431	50 01 06,03 N	015 34 45,03 E
PD432	50 06 16,69 N	015 35 07,22 E
PD433	50 05 36,10 N	015 56 49,25 E
PD434	50 05 20,62 N	016 04 34,47 E
PD435	50 00 09,87 N	016 04 09,11 E
PD27F	50 00 25,78 N	015 56 09,06 E

