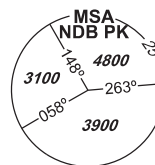


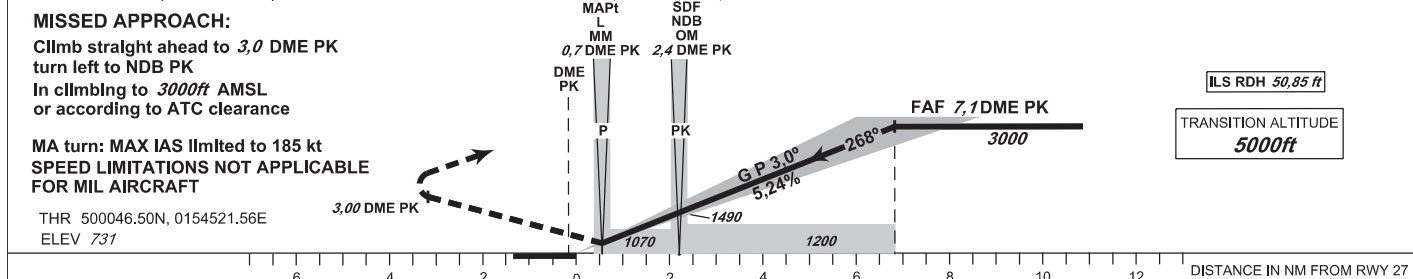
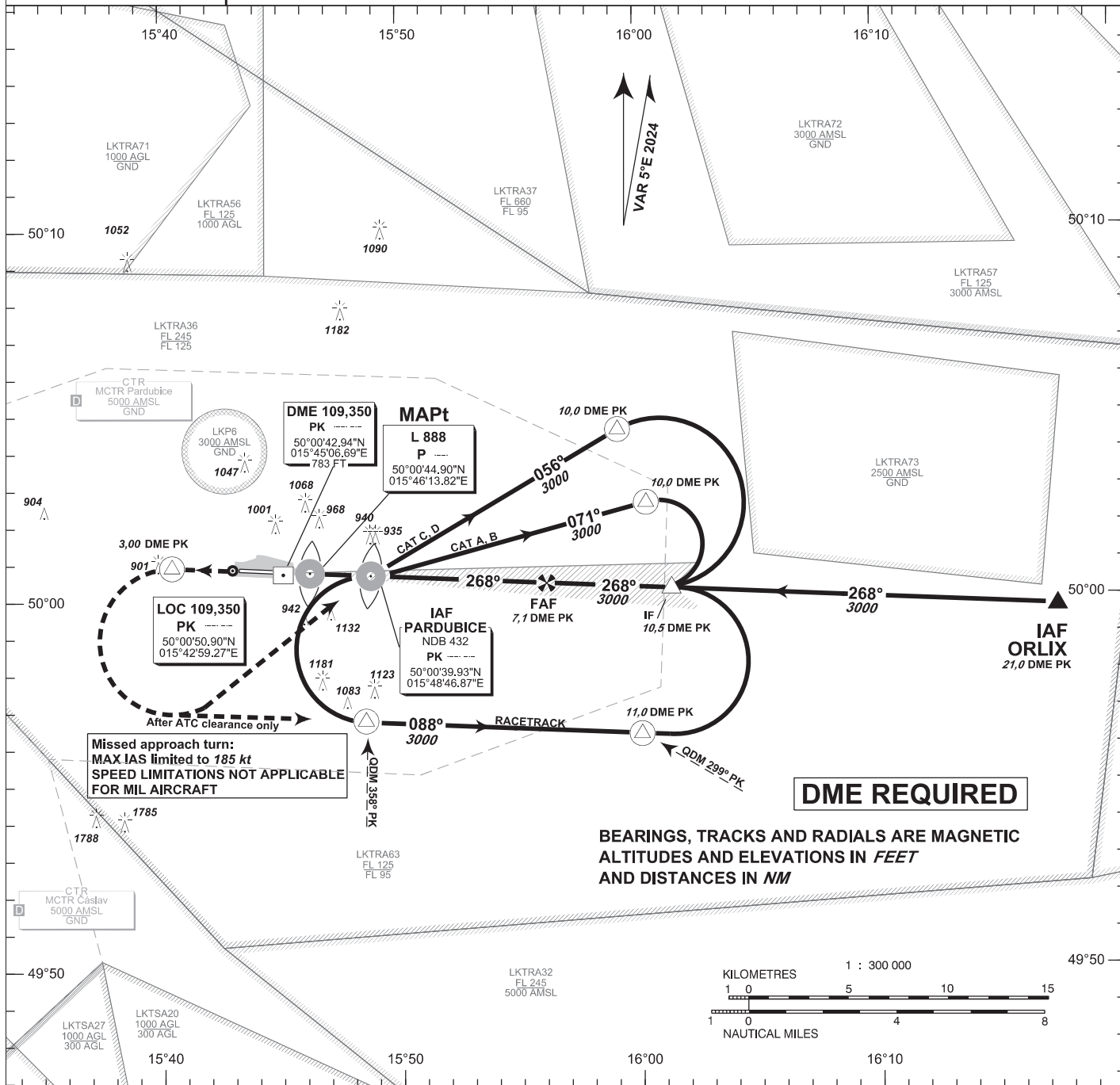
# INSTRUMENT APPROACH CHART - ICAO

**AERODROME ELEV 741**  
**THR RWY 27 ELEV 731**  
**OCH RELATED TO THR RWY 27**

<b>PARDUBICE</b>			
RADAR	128,365	267,300 O/R	
PRECISION	296,825 O/R	123,300 O/R reserve	
TOWER	120,155	120,205 reserve	



**PARDUBICE ILS Z RWY 27**



OCA/OCH		A	B	C	D
Straight-in	CAT I	ft 899/168	912/181	920/189	930/199
Approach	LOC	ft 1070/340			
Circling South of AD Only!		ft 1240/510	1430/700	1580/850	1730/1010

DME PK	NM	7	6	5	4	3	2	1
ALTITUDES	ft	2960	2640	2330	2010	1690	1370	1050

kt	80	100	120	140	160	180	
min:sec	4:46	3:46	3:12	2:45	2:24	2:08	
Rate of descent	ft/min	430	540	650	750	860	970

change: VAR; MAG tracks Timing is not authorized for defining the MAPt.