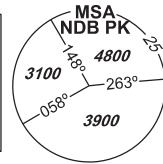


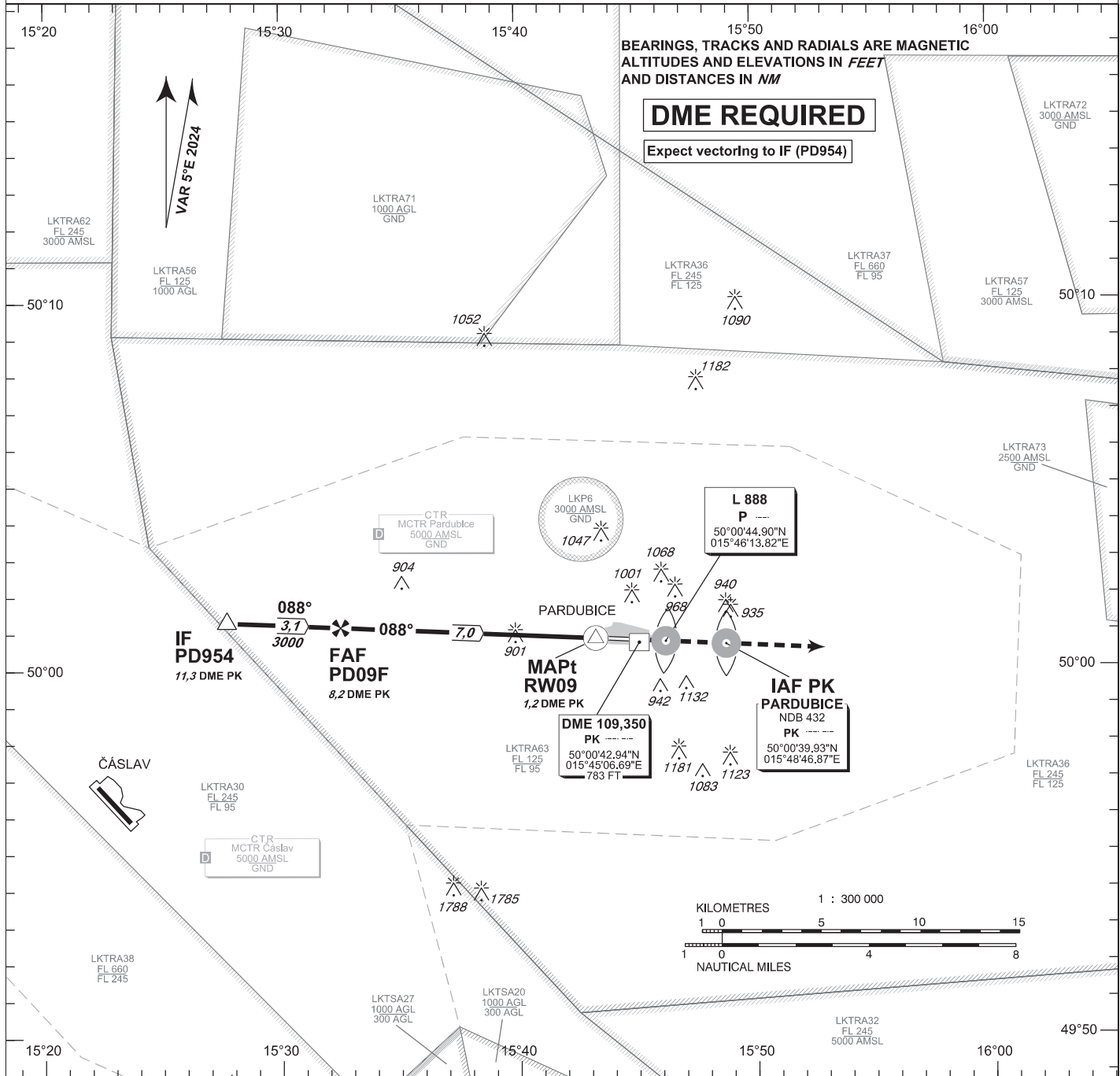
# INSTRUMENT APPROACH CHART - ICAO

AERODROME ELEV 741  
 THR RWY 09 ELEV 736  
 OCH RELATED TO THR RWY 09

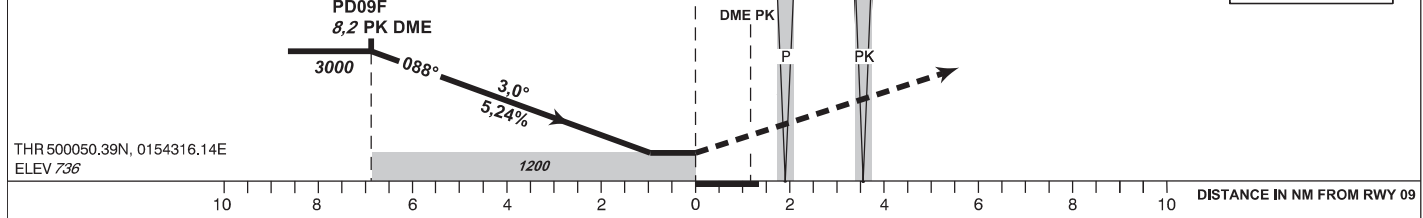
PARDUBICE	
RADAR	128,365 267,300 O/R
PRECISION	296,825 O/R 123,300 O/R reserve
TOWER	120,155 120,205 reserve



# PARDUBICE NDB RWY 09



**MISSED APPROACH:**  
 Climb straight ahead to 3000ft AMSL and expect vectoring



OCA/OCH	A	B	C	D
Straight-in Approach	ft 1200 / 460			
Circling South of AD Only	ft 1240 / 510	1430 / 700	1580 / 850	1730 / 1010

Dist to DME PK NM	8	7	6	5	4	3	2
ALTITUDES ft	2950	2640	2320	2000	1680	1360	1040

FAF - MAPt 7,0 NM	kt	80	100	120	140	160	180
	min:sec	5:14	4:11	3:29	3:00	2:37	2:20
Rate of descent	ft/min	420	530	640	740	850	950

change: VAR; MAG tracks

Timing is not authorized for defining the MAPt

Seznam traťových bodů / Way point list		
PD954	50 01 18,17 N	015 27 41,98 E
PD09F	50 01 09,83 N	015 32 30,04 E

