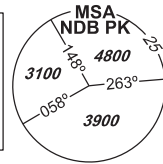


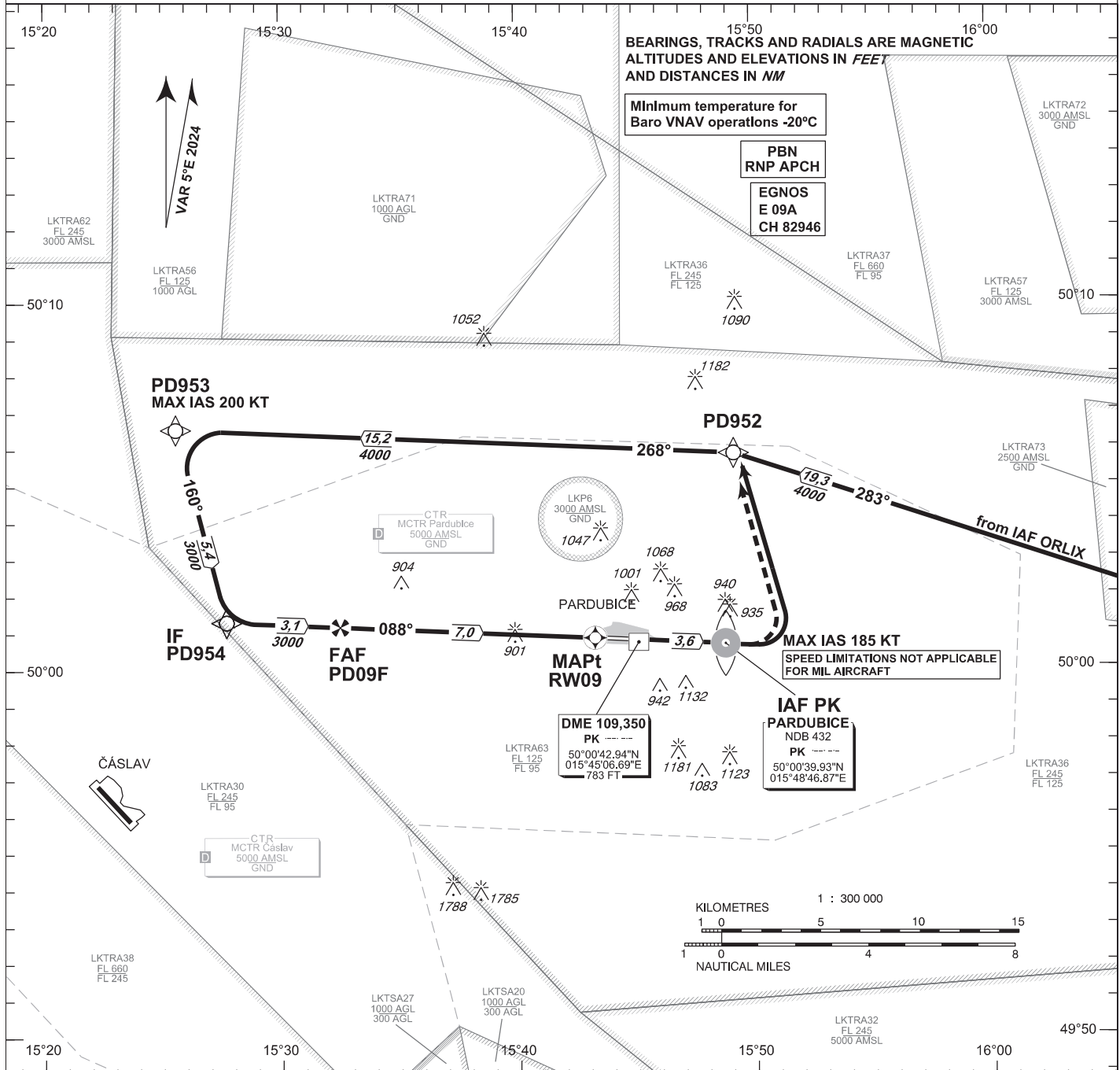
# INSTRUMENT APPROACH CHART - ICAO

AERODROME ELEV 741  
 THR RWY 09 ELEV 736  
 OCH RELATED TO THR RWY 09

PARDUBICE	
RADAR	128,365 267,300 O/R
PRECISION	296,825 O/R 123,300 O/R reserve
TOWER	120,155 120,205 reserve



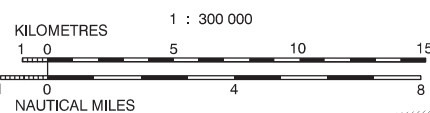
# PARDUBICE RNP RWY 09



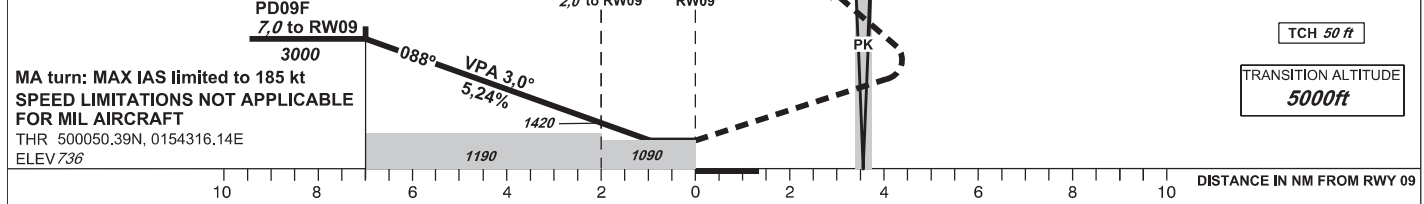
BEARINGS, TRACKS AND RADIALS ARE MAGNETIC  
 ALTITUDES AND ELEVATIONS IN FEET  
 AND DISTANCES IN NM

Minimum temperature for Baro VNAV operations -20°C  
 PBN RNP APCH  
 EGNOS E 09A CH 82946

MAX IAS 185 KT  
 SPEED LIMITATIONS NOT APPLICABLE FOR MIL AIRCRAFT



**MISSED APPROACH:**  
 Climb to NDB PK, turn left to PD952 and join initial approach  
 Climb to 4000ft



OCA/OCH		A	B	C	D	
Straight-in Approach	LNAV	ft	1090 / 360			
	LNAV / VNAV	ft	1032 / 296			
	LPV	ft	986 / 250			
Circling South of AD Only!		ft	1240 / 510	1430 / 700	1580 / 850	1730 / 1010

Dist to THR (RW09) NM	7	6	5	4	3	2	1
ALTITUDES ft	3000	2700	2380	2060	1740	1420	1100
	kt	80	100	120	140	160	180
FAF - MAPt 7,0 NM	min:sec	5:14	4:11	3:29	3:00	2:37	2:20
Rate of descent	ft/min	420	530	640	740	850	950

change: VAR; MAG tracks

Timing is not authorized for defining the MAPt.

Seznam traťových bodů / Way point list		
PD952	50 05 50,85 N	015 49 10,95 E
PD953	50 06 33,25 N	015 25 34,47 E
PD954	50 01 18,17 N	015 27 41,98 E
PD09F	50 01 09,83 N	015 32 30,04 E

### SBAS FAS Data Block

#### Vstupní data / Input Data

Parametry / Parameters	Hodnoty / Values
Operation Type	0
SBAS Provider	1 (EGNOS)
Airport Identifier	LKPD
Runway	09
Runway Letter	0 (None)
Approach Performance Designator	0
Route Indicator	
Reference Path Data Selector	0
Reference Path Identifier	E09A
LTP/FTP Latitude	500050.3900N
LTP/FTP Longitude	0154316.1400E
LTP/FTP Ellipsoidal Height (metres)	268.5
FPAP Latitude	500046.5000N
Delta FPAP Latitude (seconds)	-3.8900
FPAP Longitude	0154521.5600E
Delta FPAP Longitude (seconds)	125.4200
Threshold Crossing Height	50.0
TCH Units Selector	0 (feet)
Glidepath Angle (degrees)	3.00
Course Width (metres)	105.00
Length Offset (metres)	0
HAL (metres)	40.0
VAL (metres)	50.0

#### Výstupní data / Output Data

Parametry / Parameters	Hodnoty / Values
Data Block	10 04 10 0B 0C 09 00 00 01 39 30 05 AC B3 76 15 58 2D BF 06 7D 1E 9C E1 FF D8 D3 03 F4 01 2C 01 64 00 C8 FA 01 08 34 3A
Calculated CRC Value	0108343A

#### Required Additional Data (not CRC wrapped)

Parametry / Parameters	Hodnoty / Values
ICAO Code	LK
LTP/FTP Orthometric Height (metres)	224.3

