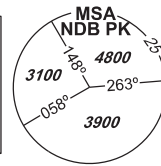


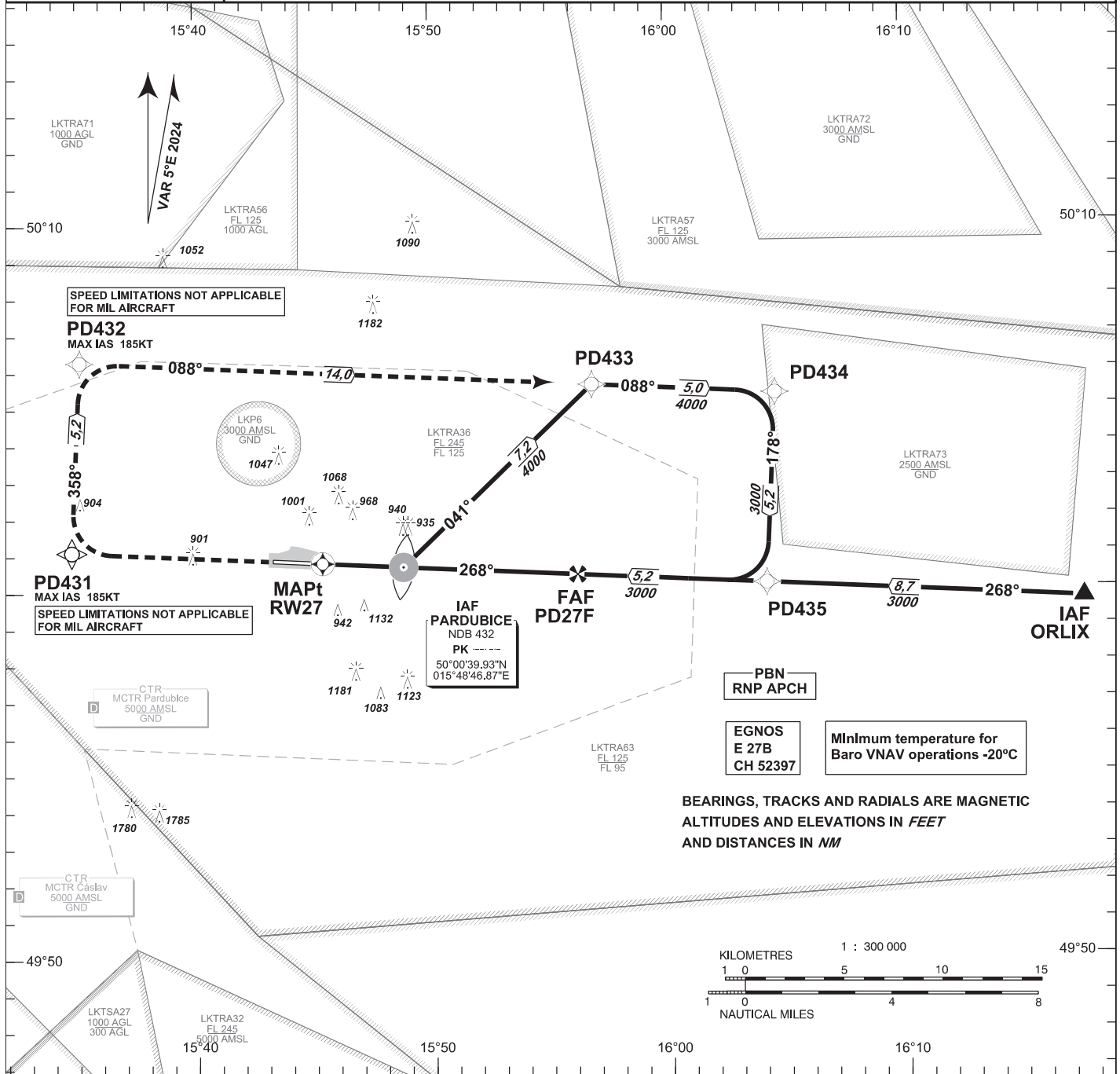
INSTRUMENT APPROACH CHART - ICAO

AERODROME ELEV 741
THR RWY 27 ELEV 731
OCH RELATED TO THR RWY 27

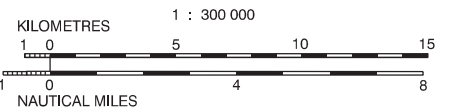
| | |
|-----------|---------------------------------|
| PARDUBICE | |
| RADAR | 128,365 267,300 O/R |
| PRECISION | 296,825 O/R 123,300 O/R reserve |
| TOWER | 120,155 120,205 reserve |



PARDUBICE
RNP Y
CAT C, D
RWY 27



BEARINGS, TRACKS AND RADIALS ARE MAGNETIC
 ALTITUDES AND ELEVATIONS IN FEET
 AND DISTANCES IN NM

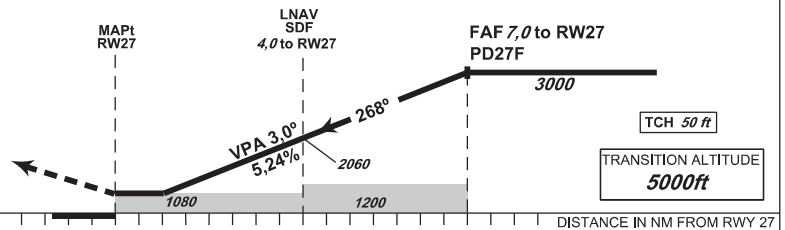


MISSED APPROACH:

Climb straight ahead to PD431, turn right to PD432, turn right to PD433 and join Initial approach via PD434. Climb to 4000ft.

MA turn: MAX IAS limited to 185 kt
 SPEED LIMITATIONS NOT APPLICABLE FOR MIL AIRCRAFT

THR 500046.50N, 0154521.56E
 ELEV 731



| | | | | |
|---------------------------|-------------|----|------------|-------------|
| OCA/OCH | | | C | D |
| Straight-in Approach | LNAV | ft | 1080 / 350 | |
| | LNAV / VNAV | ft | 1075 / 345 | |
| | LPV | ft | 931 / 200 | |
| Circling South of AD Only | | ft | 1580 / 850 | 1730 / 1010 |

| | | | | | | | |
|-----------------------|---------|------|------|------|------|------|------|
| Dist to THR (RW27) NM | 7 | 6 | 5 | 4 | 3 | 2 | 1 |
| ALTITUDES ft | 3000 | 2690 | 2370 | 2060 | 1740 | 1420 | 1100 |
| | kt | 80 | 100 | 120 | 140 | 160 | 180 |
| FAF - MAPt 7,0 NM | min:sec | 5:14 | 4:11 | 3:30 | 3:00 | 2:37 | 2:20 |
| Rate of descent | ft/min | 430 | 540 | 650 | 750 | 860 | 970 |

change: VAR; MAG tracks

Timing is not authorized for defining the MAPt.

| Seznam traťových bodů / Way point list | | |
|--|---------------|----------------|
| PD431 | 50 01 06,03 N | 015 34 45,03 E |
| PD432 | 50 06 16,69 N | 015 35 07,22 E |
| PD433 | 50 05 36,10 N | 015 56 49,25 E |
| PD434 | 50 05 20,62 N | 016 04 34,47 E |
| PD435 | 50 00 09,87 N | 016 04 09,11 E |
| PD27F | 50 00 25,78 N | 015 56 09,06 E |

SBAS FAS Data Block

Vstupní data / Input Data

| Parametry / Parameters | Hodnoty / Values |
|-------------------------------------|------------------|
| Operation Type | 0 |
| SBAS Provider | 1 (EGNOS) |
| Airport Identifier | LKPD |
| Runway | 27 |
| Runway Letter | 0 (None) |
| Approach Performance Designator | 0 |
| Route Indicator | Y |
| Reference Path Data Selector | 0 |
| Reference Path Identifier | E27B |
| LTP/FTP Latitude | 500046.5000N |
| LTP/FTP Longitude | 0154521.5600E |
| LTP/FTP Ellipsoidal Height (metres) | 267.1 |
| FPAP Latitude | 500050.3900N |
| Delta FPAP Latitude (seconds) | 3.8900 |
| FPAP Longitude | 0154316.1400E |
| Delta FPAP Longitude (seconds) | -125.4200 |
| Threshold Crossing Height | 50.0 |
| TCH Units Selector | 0 (feet) |
| Glidepath Angle (degrees) | 3.00 |
| Course Width (metres) | 105.00 |
| Length Offset (metres) | 0 |
| HAL (metres) | 40.0 |
| VAL (metres) | 35.0 |

Výstupní data / Output Data

| Parametry / Parameters | Hodnoty / Values |
|------------------------|--|
| Data Block | 10 04 10 0B 0C 1B C8 00 02 37 32 05 48 95 76 15 30 01 C3 06 6F 1E 64 1E 00 28 2C FC F4 01 2C 01 64 00 C8 AF AD EC B4 5B |
| Calculated CRC Value | ADECB45B |

Required Additional Data (not CRC wrapped)

| Parametry / Parameters | Hodnoty / Values |
|-------------------------------------|------------------|
| ICAO Code | LK |
| LTP/FTP Orthometric Height (metres) | 222.9 |

