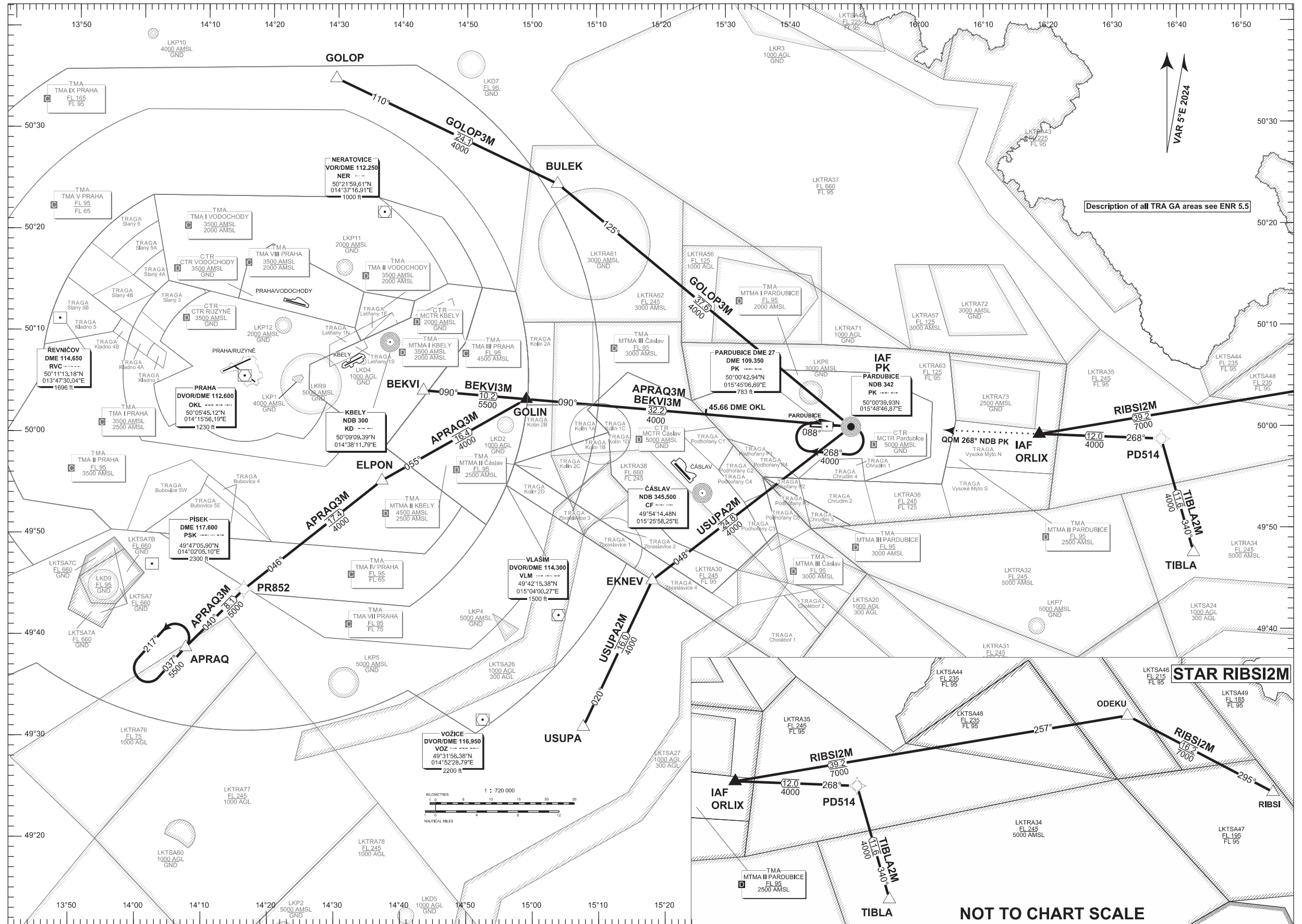


STANDARD ARRIVAL CHART- INSTRUMENT (STAR) - ICAO

PARDUBICE (LKPD) RNAV RWY 09-27

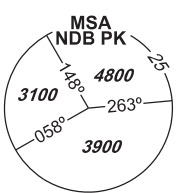
APRAQ3M BEKVI3M GOLOP3M RIBSI2M TIBLA2M USUPA2M



Description of all TRA GA areas see ENR 5.5

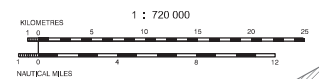
VAR 5°E 2024

PARDUBICE	
RADAR	128,365 267,300 O/R
PRECISION	296,825 O/R 123,300 O/R reserve
TOWER	120,155 120,205 reserve



BEARINGS, TRACKS AND RADIALS ARE MAGNETIC
ALTITUDES AND ELEVATIONS
ARE IN FEET
DISTANCES ARE IN NM

TRANSITION ALTITUDE
5000 FT



NOT TO CHART SCALE

change : VAR; MAG tracks; route designators